

RUPES[®]

CATALOG
2019



INDEX

ELECTRIC TOOLS

page 7

| | |
|-----------------|---------|
| BigFoot Systems | page 9 |
| BigFoot Nano | page 19 |

PNEUMATIC TOOLS

page 23

| | |
|---------------------|---------|
| Pneumatic Polishers | page 25 |
| Pneumatic Sanders | page 28 |

CONSUMABLES AND ACCESSORIES

page 33

| | |
|--------------------------|---------|
| Polishing Pads | page 35 |
| Polishing Compounds | page 41 |
| BigFoot Nano Accessories | page 43 |
| Abrasives | page 45 |
| Backing Pads | page 48 |
| Car Care Products | page 49 |
| Polishing Accessories | page 51 |

DUST EXTRACTION SYSTEMS

page 55

| | |
|-------------------------|---------|
| Portable/Mobile Systems | page 57 |
| Vacuum Accessories | page 60 |



INNOVATION TECHNOLOGY DESIGN

RUPES is a family owned and operated Italian Company, founded in 1947 in Milan. Since its inception, RUPES' commitment to product innovation and quality manufacturing has defined the company as a **worldwide benchmark manufacturer** of professional electric and pneumatic tools, accessory items and vacuum systems.

RUPES commitment to research and development has been the driving factor in the success of the company. The focus on designing and manufacturing products that are in total compliance with health and safety regulations and offer enhanced worker comfort defines each new product initiative.

Over the last years RUPES has developed a wide number of patents and created several solutions that have simplified today's work and increased performances.

USA BASED SUPPORT & SERVICE

In January of 2015 RUPES SpA acquired Colorado based tool manufacturer Cyclo Toolmakers, Inc. and subsequently formed the company known today at **RUPES USA, Inc.**

The North American division of the Italian parent company has since gone on to become an additional manufacturing site and provides **USA based service, support, and training** for the entire line of RUPES products.

The new state-of-the-art **RUPES USA** facility opened its doors in January of 2018, further increasing the capabilities of RUPES in the North American market. The Colorado offices are located just 30 minutes north of Denver, and boast a world class training center known as the **BigFoot Detailing Academy**, a massive manufacturing space, full service repair center and sales support and management offices.



ELECTRIC_____

TOOLS

BigFoot Polishing Systems
BigFoot iBrid Nano

ELECTRIC TOOLS *BIGFOOT POLISHING SYSTEMS*

LHR 21 MarkIII

Random orbital polisher

| TECHNICAL DATA | | |
|----------------------|--------|-------------|
| Ø backing pad | mm-in | 150 - 6" |
| Ø orbit | mm-in | 21 - 13/16" |
| Power | Watt | 500 |
| R.P.M. | | 3000 - 4500 |
| Weight | kg-lbs | 2.7 - 5.95 |
| Speed control | | • |
| Spindle thread | | M8-F |
| Backing pad supplied | | 981.321N |
| Electrical Cord | m - ft | 9 - 30' |



RANDOM ORBITAL



LHR 21 MarkIII Premium Kit (LHR21III/US/PRM)

- 1 X LHR 21 MarkIII Random orbital polisher
- 1 X Backing pad Ø150mm - Ø6" (cod. 981.321N)
- 1 X BigFoot semi rigid tool bag (cod. 9.Z781/BF)
- 1 X ZEPHIR coarse compound 250ml COARSE (cod. 9.BFZEPHIR250)
- 1 X KERAMIK polishing compound 250ml COARSE (cod. 9.BKERAMIK250)
- 2 X Foam polishing pad COARSE Ø150-180mm - Ø6"-7" (cod. 9.BF180H)
- 2 X Foam polishing pad FINE Ø150-180mm - Ø6"-7" (cod. 9.BF180M)
- 2 X Wool polishing pad COARSE Ø150-180mm - Ø6"-6.75" (cod. 9.BW180H)
- 2 X Foam polishing pad FINE Ø150-180mm - Ø6"-6.75" (cod. 9.BW180M)
- 1 X P808 Protective Sealant 500ml (cod. 9.CCP808)
- 1 X BigFoot Claw pad tool (cod. 9.BF7001)
- 1 X RUPES Swirl Finder Pen Light (cod. LL150)
- 1 X Cable Clamp cord organizer (cod. 9.Z1024)
- 4 X Microfiber cloths (cod. 9.BF9010/4)
- 1 X BigFoot detailing apron (cod. 9.Z868)



LHR 21 MarkIII Deluxe Kit (LHR21III/US/DLX)

- 1 X LHR 21 MarkIII Random orbital polisher
- 1 X Backing pad Ø150mm - Ø6" (cod. 981.321N)
- 1 X BigFoot semi rigid tool bag (cod. 9.Z781/BF)
- 1 X ZEPHIR polishing compound 250ml COARSE (cod. 9.BFZEPHIR250)
- 1 X QUARZ polishing compound 250ml MEDIUM (cod. 9.BFQUARZ250)
- 1 X KERAMIK polishing compound 250ml FINE (cod. 9.BFKERAMIK250)
- 1 X DIAMOND polishing compound 250ml ULTRA FINE (cod. 9.BFDIAMOND250)
- 1 X Foam polishing pad COARSE Ø150-180mm - Ø6"-7" (cod. 9.BF180H)
- 1 X Foam polishing pad MEDIUM Ø150-180mm - Ø6"-7" (cod. 9.BF180J)
- 1 X Foam polishing pad FINE Ø150-180mm - Ø6"-7" (cod. 9.BF180M)
- 1 X Foam polishing pad ULTRAFINE Ø150-180mm - Ø6"-7" (cod. 9.BF180S)
- 4 X Microfiber cloths (cod. 9.BF9010/4)
- 1 X BigFoot detailing apron (cod. 9.Z868)





Mark III

LHR 21 MarkIII Bodyshop Kit (LHR21III/US/PBE)

- 1 X LHR 21 MarkIII Random orbital polisher
- 1 X Backing pad Ø150mm - Ø6" (cod. 981.321N)
- 1 X ZEPHIR coarse compound 1000ml COARSE (cod. 9.BFZEPHIR)
- 1 X KERAMIK polishing compound 1000ml COARSE (cod. 9.BFKERAMIK)
- 2 X Foam polishing pad COARSE Ø150-180mm - Ø6"-7" (cod. 9.BF180H)
- 2 X Foam polishing pad FINE Ø150-180mm - Ø6"-7" (cod. 9.BF180M)
- 2 X Wool polishing pad COARSE Ø150-180mm - Ø6"-6.75" (cod. 9.BW180H)
- 2 X Wool polishing pad FINE Ø150-180mm - Ø6"-6.75" (cod. 9.BW180M)
- 1 X BigFoot Claw pad tool (cod. 9.BF7001)



LHR 21 MarkIII Standard Kit (LHR21III/US/STN)

- 1 X LHR 21 MarkIII Random orbital polisher
- 1 X Backing pad Ø150mm - Ø6" (cod. 981.321N)
- 1 X QUARZ polishing compound 250ml MEDIUM (cod. 9.BFQUARZ250)
- 1 X KERAMIK polishing compound 250ml FINE (cod. 9.BFKERAMIK250)
- 1 X Foam polishing pad MEDIUM Ø150-180mm - Ø6" - 7" (cod. 9.BF180J)
- 1 X Foam polishing pad FINE Ø150-180mm - Ø6" - 7" (cod. 9.BF180M)
- 4 X Microfiber cloths (cod. 9.BF9010/4)



LHR 21 MarkIII Single Tool (LHR21III/US/STD)

- 1 X LHR 21 MarkIII Random orbital polisher
- 1 X Backing pad Ø150mm - Ø6" (cod. 981.321N)
- Polishing pads sold separately



ELECTRIC TOOLS *BIGFOOT POLISHING SYSTEMS*

LHR 15 MarkIII

Random orbital polisher

| TECHNICAL DATA | | |
|----------------------|--------|-------------|
| Ø backing pad | mm-in | 125 - 5" |
| Ø orbit | mm-in | 15 - 19/32" |
| Power | Watt | 500 |
| R.P.M. | | 3000 - 5200 |
| Weight | kg-lbs | 2.6 - 5.73 |
| Speed control | | • |
| Spindle thread | | M8-F |
| Backing pad supplied | | 980.027N |
| Electrical Cord | m - ft | 9 - 30' |



RANDOM ORBITAL



LHR 15 MarkIII Premium Kit (LHR15III/US/PRM)

- 1 X LHR 15 MarkIII Random orbital polisher
- 1 X Backing pad Ø125mm - Ø5" (cod. 980.027N)
- 1 X BigFoot semi rigid tool bag (cod. 9.2781/BF)
- 1 X ZEPHIR coarse compound 250ml COARSE (cod. 9.BFZEPHIR250)
- 1 X KERAMIK polishing compound 250ml COARSE (cod. 9.BKERAMIK250)
- 2 X Foam polishing pad COARSE Ø130-150mm - Ø5"-6" (cod. 9.BF150H)
- 2 X Foam polishing pad FINE Ø130-150mm - Ø5"-6" (cod. 9.BF150M)
- 2 X Wool polishing pad COARSE Ø130-145mm - Ø5"-5.75" (cod. 9.BW150H)
- 2 X Foam polishing pad FINE Ø130-150mm - Ø5"-5.75" (cod. 9.BW150M)
- 1 X P808 Protective Sealant 500ml (cod. 9.CCP808)
- 1 X BigFoot Claw pad tool (cod. 9.BF7001)
- 1 X RUPES Swirl Finder Pen Light (cod. LL150)
- 1 X Cable Clamp cord organizer (cod. 9.Z1024)
- 4 X Microfiber cloths (cod. 9.BF9010/4)



LHR 15 MarkIII Deluxe Kit (LHR15III/US/DLX)

- 1 X LHR 15 MarkIII Random orbital polisher
- 1 X Backing pad Ø125mm - Ø5" (cod. 980.027N)
- 1 X BigFoot semi rigid tool bag (cod. 9.Z1043/BF)
- 1 X ZEPHIR polishing compound 250ml COARSE (cod. 9.BFZEPHIR250)
- 1 X QUARZ polishing compound 250ml MEDIUM (cod. 9.BFQUARZ250)
- 1 X KERAMIK polishing compound 250ml FINE (cod. 9.BFKERAMIK250)
- 1 X DIAMOND polishing compound 250ml ULTRA FINE (cod. 9.BFDIAMOND250)
- 1 X Foam polishing pad COARSE Ø130-150mm - Ø5"-6" (cod. 9.BF150H)
- 1 X Foam polishing pad MEDIUM Ø130-150mm - Ø5"-6" (cod. 9.BF150J)
- 1 X Foam polishing pad FINE Ø130-150mm - Ø5"-6" (cod. 9.BF150M)
- 1 X Foam polishing pad ULTRAFINE Ø130-150mm - Ø5"-6" (cod. 9.BF150S)
- 4 X Microfiber cloths (cod. 9.BF9010/4)






Mark III

LHR 15 MarkIII Standard Kit (LHR15III/US/STN)

- 1 X LHR 15 MarkIII Random orbital polisher
- 1 X Backing pad Ø125mm - Ø5" (cod. 980.027N)
- 1 X QUARZ polishing compound 250ml MEDIUM (cod. 9.BFQUARZ250)
- 1 X KERAMIK polishing compound 250ml FINE (cod. 9.BFKERAMIK250)
- 1 X Foam polishing pad MEDIUM Ø130-150mm - Ø5" - 6" (cod. 9.BF150J)
- 1 X Foam polishing pad FINE Ø130-150mm - Ø5" - 6" (cod. 9.BF150M)
- 4 X Microfiber cloths (cod. 9.BF9010/4)



LHR 15 MarkIII Single Tool (LHR15III/US/STD)

- 1 X LHR 15 MarkIII Random orbital polisher
- 1 X Backing pad Ø125mm - Ø5" (cod. 980.027N)
- Polishing pads sold separately



"LHR21 or LHR15? WHICH IS RIGHT FOR ME?"

This is the most common question posed to our technical team and while there is no one-size-fits-all answer we generally recommend the LHR21 with the larger orbit and pad system for bodyshop applications where panels are polished off the car or for larger vehicles with limited curves and countours. The LHR15 excels as a detailer's tool dealing with curves and countours more effectively. Both tools produce similar results but do so with different engineering approaches. Regardless of which tool you choose you'll see class leading performance and amazing results from the BigFoot system.

ELECTRIC TOOLS *BIGFOOT POLISHING SYSTEMS*

LHR 21ES

Random orbital polisher



| TECHNICAL DATA | | |
|----------------------|--------|-------------|
| Ø backing pad | mm-in | 150 - 6" |
| Ø orbit | mm-in | 21 - 13/16" |
| Power | Watt | 500 |
| R.P.M. | | 2000 - 4200 |
| Weight | kg-lbs | 2.6 - 5.73 |
| Speed control | | • |
| Spindle thread | | M8-F |
| Backing pad supplied | | 981.321N |
| Electrical Cord | m - ft | 9 - 30' |



LHR 21ES Deluxe Kit (LHR21ES/US/DLX)

- 1 X LHR 21ES Random orbital polisher
- 1 X Backing pad Ø150mm - Ø6" (cod. 981.321N)
- 1 X BigFoot semi rigid tool bag cod. (9.Z871/BF)
- 1 X ZEPHIR polishing compound 250ml COARSE (cod. 9.BFZEPHIR250)
- 1 X QUARZ polishing compound 250ml MEDIUM (cod. 9.BFQUARZ250)
- 1 X KERAMIK polishing compound 250ml FINE (cod. 9.BFKERAMIK250)
- 1 X DIAMOND polishing compound 250ml ULTRA FINE (cod. 9.BFDIAMOND250)
- 1 X Foam polishing pad COARSE Ø150-180mm - Ø6" - 7" (cod. 9.BF180H)
- 1 X Foam polishing pad MEDIUM Ø150-180mm - Ø6" - 7" (cod. 9.BF180J)
- 1 X Foam polishing pad FINE Ø150-180mm - Ø6" - 7" (cod. 9.BF180M)
- 1 X Foam polishing pad ULTRAFINE Ø150-180mm - Ø6" - 7" (cod. 9.BF180S)
- 4 X Microfiber cloths (cod. 9.BF9010/4)



LHR 21ES Standard Kit (LHR21ES/US/STN)

- 1 X LHR 21ES Random orbital polisher
- 1 X Backing pad Ø150mm - Ø6" (cod. 981.321N)
- 1 X QUARZ polishing compound 250ml MEDIUM (cod. 9.BFQUARZ250)
- 1 X KERAMIK polishing compound 250ml FINE (cod. 9.BFKERAMIK250)
- 1 X Foam polishing pad MEDIUM Ø150-180mm - Ø6" - 7" (cod. 9.BF180J)
- 1 X Foam polishing pad FINE Ø150-180mm - Ø6" - 7" (cod. 9.BF180M)
- 4 X Microfiber cloths (cod. 9.BF9010/4)



LHR 21ES Single Tool (LHR21ES/US/STD)

- 1 X LHR 21ES Random orbital polisher
- 1 X Backing pad Ø150mm - Ø6" (cod. 981.321N)
- Polishing pads sold separately



ELECTRIC TOOLS **BIGFOOT** *POLISHING SYSTEMS*

LHR 15ES

Random orbital polisher



TECHNICAL DATA

| | | |
|----------------------|--------|--------------------|
| Ø backing pad | mm-in | 125 - 5" |
| Ø orbit | mm-in | 15 - 19/32" |
| Power | Watt | 500 |
| R.P.M. | | 2000 - 5000 |
| Weight | kg-lbs | 2.5 - 5.51 |
| Speed control | | • |
| Spindle thread | | M8-F |
| Backing pad supplied | | 980.027N |
| Electrical Cord | m - ft | 9 - 30' |



LHR 15ES Deluxe Kit (LHR15ES/US/DLX)

- 1 X LHR 15ES Random orbital polisher
- 1 X Backing pad Ø125mm - Ø5" (cod. 980.027N)
- 1 X BigFoot semi rigid tool bag (cod. 9.Z871/BF)
- 1 X ZEPHIR polishing compound 250ml COARSE (cod. 9.BFZEPHIR250)
- 1 X QUARZ polishing compound 250ml MEDIUM (cod. 9.BFQUARZ250)
- 1 X KERAMIK polishing compound 250ml FINE (cod. 9.BFKERAMIK250)
- 1 X DIAMOND polishing compound 250ml ULTRA FINE (cod.9.BFDIAMOND250)
- 1 X Foam polishing pad COARSE Ø130-150mm - Ø5"- 6" (cod. 9.BF150H)
- 1 X Foam polishing pad MEDIUM Ø130-150mm - Ø5"- 6" (cod. 9.BF150J)
- 1 X Foam polishing pad FINE Ø130-150mm - Ø5"- 6" (cod. 9.BF150M)
- 1 X Foam polishing pad ULTRAFINE Ø130-150mm - Ø5"- 6" (cod. 9.BF150S)
- 4 X Microfiber cloths (cod. 9.BF9010/4)



LHR 15ES Standard Kit (LHR15ES/US/STN)

- 1 X LHR 15ES Random orbital polisher
- 1 X Backing pad Ø125mm - Ø5" (cod. 980.027N)
- 1 X QUARZ polishing compound 250ml MEDIUM (cod. 9.BFQUARZ250)
- 1 X KERAMIK polishing compound 250ml FINE (cod. 9.BFKERAMIK250)
- 1 X Foam polishing pad MEDIUM Ø130-150mm - Ø5"- 6" (cod. 9.BF150J)
- 1 X Foam polishing pad FINE Ø130-150mm - Ø5"- 6" (cod. 9.BF150M)
- 4 X Microfiber cloths (cod. 9.BF9010/4)



LHR 15 ES Single Tool (LHR15ES/US/STD)

- 1 X LHR 15ES Random orbital polisher
- 1 X Backing pad Ø125mm - Ø5" (cod. 980.027N)
- Polishing pads sold separately



ELECTRIC TOOLS **BIGFOOT** *POLISHING SYSTEMS*

LH 19E

Rotary Polisher



| TECHNICAL DATA | | |
|--------------------------|--------|----------------------------------|
| Ø polishing foam pad max | mm | 200 - 8" |
| Ø backing pad Availables | mm-in | 125 - 5" 150 - 6" 165 - 6.5" |
| Power | Watt | 1200 |
| R.P.M. | | 450 - 1700 |
| Weight | kg-lbs | 2.2 - 4.85 |
| Speed regulation | | • |
| Backing pad thread | | M14 (U.S.A. version 5/8") |
| Electrical Cord | m -ft | 9 - 30' |



ROTARY



LH 19E Deluxe Kit (LH19E/US/DLX)

- 1 X LH 19E Rotary polisher
- 1 X BigFoot semi rigid tool bag cod. {9.Z998/BF}
- 1 X Polishing compound 250ml COARSE (cod. 9.BRCOARSE250)
- 1 X Polishing compound 250ml FINE (cod. 9.BRFINE250)
- 1 X Polishing compound 250ml ULTRA FINE (cod. 9.BRULTRAFINE250)
- 2 X Foam polishing pad COARSE Ø135mm - Ø5.25" (cod. 9.BR150H)
- 1 X Foam polishing pad FINE Ø135mm - Ø5.25" (cod. 9.BR150M)
- 1 X Foam polishing pad ULTRAFINE Ø135mm - Ø5.25" (cod. 9.BR150S)
- 4 X Microfiber cloths (cod. 9.BF9010/4)
- 1 X BigFoot detailing apron (cod. 9.Z868)
- 1 X BigFoot Claw pad tool (cod. 9.BF7001)
- 1 X Backing pad Ø125mm - Ø5" M14 (cod. 992.500)
- 1 X Loop handle (cod. 811.374)
- 1 X Side handle (cod. 81.322)



LH 19E Standard Kit (LH19E/US/STN)

- 1 X LH 19E Rotary polisher
- 1 X Polishing compound 250ml COARSE (cod. 9.BRCOARSE250)
- 1 X Polishing compound 250ml FINE (cod. 9.BRFINE250)
- 1 X Foam polishing pad COARSE Ø135mm - Ø5.25" (cod. 9.BR150H)
- 1 X Foam polishing pad FINE Ø135mm - Ø5.25" (cod. 9.BR150M)
- 1 X Backing pad Ø125mm - Ø5" M14 (cod. 992.500)
- 1 X Loop handle (cod. 811.374)



LH 19E Single Tool (LH19E/US/STD)

- 1 X LH 19E Rotary polisher
- 1 X Backing pad Ø125mm - Ø5" M14 (cod. 992.500)
- 1 X Loop handle (cod. 811.374)
- Polishing pads sold separately



ELECTRIC TOOLS **BIGFOOT** *POLISHING SYSTEMS*

LK 900E

Gear Driven Dual Action Polisher



TECHNICAL DATA

| | | |
|--------------------|--------|---------------------|
| Ø backing pad | mm-in | 125 - 5" 150 - 6" |
| Ø orbit | mm-in | 5 - 3/16" |
| Power | Watt | 900 |
| R.P.M. | | 265 - 535 |
| Weight | kg-lbs | 2.80 - 6.17 |
| Speed regulation | | • |
| Backing pad thread | | 6 x M4 |
| Electrical Cord | m - ft | 9 - 30' |



GEAR DRIVEN



LK 900E Mille Deluxe Kit (LK900E/US/DLX)

- 1 X LK 900E Gear Driven polisher
- 1 X BigFoot semi rigid tool bag (cod. 9.Z999/BF)
- 1 X Polishing compound 250ml COARSE (cod. 9.BGCOARSE250)
- 1 X Polishing compound 250ml FINE (cod. 9.BGFINE250)
- 1 X Protective Sealant 500ml (cod. 9.CCP808)
- 1 X Foam polishing pad COARSE Ø130-140mm - Ø5" - 5.5" (cod. 9.BG150H)
- 1 X Foam polishing pad FINE Ø130-140mm - Ø5" - 5.5" (cod. 9.BG150M)
- 1 X Wool polishing pad COARSE Ø130-145mm - Ø5" - 5.75" (cod. 9.BW150H)
- 1 X Wool polishing pad MEDIUM Ø130-145mm - Ø5" - 5.75" (cod. 9.BW150M)
- 1 X BigFoot Claw pad tool (cod. 9.BF7001)
- 4 X Microfiber cloths (cod. 9.BF9010/4)
- 1 X Backing pad Ø125mm - Ø5" (cod. 980.037)
- 1 X Backing pad Ø150mm - Ø6" (cod. 981.089)



LK 900E Mille Standard Kit (LK900E/US/STN)

- 1 X LK 900E Random orbital polisher
- 1 X Polishing compound 250ml COARSE (cod. 9.BGCOARSE250)
- 1 X Polishing compound 250ml FINE (cod. 9.BGFINE250)
- 1 X Foam polishing pad COARSE Ø130 - 140mm - Ø5" - 5.5" (cod. 9.BG150H)
- 1 X Foam polishing pad FINE Ø130 - 140mm - Ø5" - 5.5" (cod. 9.BG150M)
- 1 X Backing pad Ø125mm - Ø5" (cod. 980.037)
- 1 X Backing pad Ø150mm - Ø6" (cod. 981.089)



LK 900E Mille (LK900E/US/STD)

- 1 X LK 900E Random orbital polisher
- 1 X Backing pad Ø125mm - Ø5" (cod. 980.037)
- 1 X Backing pad Ø150mm - Ø6" (cod. 981.089)
- Polishing pads sold separately



ELECTRIC TOOLS **BIGFOOT** *POLISHING SYSTEMS*

LHR 12E DUETTO

Random orbital polisher



TECHNICAL DATA

| | | |
|----------------------|--------|--------------------|
| Ø backing pad | mm-in | 125 - 5" |
| Ø orbit | mm-in | 12 - 1/2" |
| Power | Watt | 400 |
| R.P.M. | | 4000 - 5500 |
| Weight | kg-lbs | 2.6 - 5.73 |
| Speed control | | • |
| Spindle thread | | M8-F |
| Backing pad supplied | | 980.027N |
| Electrical Cord | m - ft | 9 - 30' |



RANDOM ORBITAL



LHR 12E Duetto Deluxe Kit (LHR12E/US/DLX)

- 1 X LHR 12E DUETTO Random orbital polisher
- 1 X Backing pad Ø125mm - Ø5" (cod. 980.027N)
- 1 X BigFoot soft tool bag (cod. 9.Z883/BF)
- 1 X ZEPHIR polishing compound 250ml COARSE (cod. 9.BFZEPHIR250)
- 1 X KERAMIK polishing compound 250ml FINE (cod. 9.BFKERAMIK250)
- 2 X Foam polishing pads COARSE Ø130-150mm - Ø5"- 6" (cod. 9.BF150H)
- 2 X Foam polishing pads FINE Ø130-150mm - Ø5"- 6" (cod. 9.BF150M)
- 1 X Soft interface (cod. 980.041)
- 3 X Abrasives X-Cut P 2000 (cod. 9.45401)
- 3 X Abrasives X-Cut P 3000 (cod. 9.45403)
- 4 X Microfiber cloths (9.BF9010/4)
- 1 X BigFoot detailing apron (cod. 9.Z868)



LHR 12E Duetto Single Tool (LHR12E/US/STD)

- 1 X LHR 12E Random orbital polisher
- 1 X Backing pad Ø125mm - Ø5" (cod. 980.027N)
- Polishing pads sold separately



ELECTRIC TOOLS **BIGFOOT** *POLISHING SYSTEMS*

LHR 75E MINI

Random orbital polisher



TECHNICAL DATA

| | | |
|----------------------|--------|--------------------|
| Ø backing pad | mm-in | 75 - 3" |
| Ø orbit | mm-in | 12 - 1/2" |
| Power | Watt | 400 |
| R.P.M. | | 4000 - 5500 |
| Weight | kg-lbs | 2.3 - 5.07 |
| Speed control | | • |
| Spindle thread | | M6-F |
| Backing pad supplied | | 990.007 |
| Electrical Cord | m - ft | 9 - 30' |



RANDOM ORBITAL



LHR 75E Mini Deluxe Kit (LHR75E/US/DLX)

- 1 X LHR 75E MINI Random orbital polisher
- 1 X Backing pad Ø75mm - Ø3" (cod. 990.007)
- 1 X BigFoot tools bag (cod. 9.Z883/BF)
- 1 X ZEPHIR polishing compound 250ml COARSE (cod. 9.BFZEPHIR250)
- 1 X KERAMIK polishing compound 250ml FINE (cod. 9.BFKERAMIK250)
- 2 X Foam polishing pads COARSE Ø80-100mm - Ø3" - 4" (cod. 9.BF100H)
- 2 X Foam polishing pads FINE Ø80-100mm - Ø3" - 4" (cod. 9.BF100M)
- 4 X Microfiber cloths (cod. 9.BF9010/4)
- 1 X BigFoot detailing apron (cod. 9.Z868)



LHR 75E Mini Single Tool (LHR75E/US/STD)

- 1 X LHR 75E Random orbital polisher
- 1 X Backing pad Ø75mm - Ø3" (cod. 990.007)
- Polishing pads sold separately



THREE TOOLS IN ONE

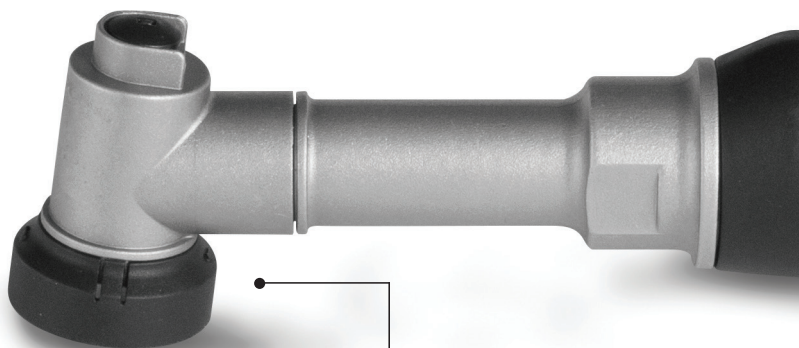


LOCK BUTTON

Spindle lock for quick, easy changes of backing plates and accessories

LED INDICATORS

High visibility LED's to monitor battery performance



PROTECTIVE SHIELD

Prevents unwanted contact with adjacent surfaces during operation

97° ANGLE

Optimized for performance and operator comfort



ROTARY ACTION

Precision defect removal on edges and profiles with **Ø30mm** (1.25") velcro backing pad

Cleaning and brushing with special accessories

RANDOM ORBITAL Ø3mm

Micro-sanding and denibbing with **Ø30mm** (1.25") vinyl backing pad

Ultra fine polishing with **Ø30mm** (1.25") velcro backing pad or **Ø50mm** (2") velcro backing pad

RANDOM ORBITAL Ø12mm

Paint correction and high gloss polishing with **Ø30mm** (1.25") velcro backing pad or **Ø50mm** (2") velcro backing pad

INTERCHANGEABLE ACCESSORIES



ON/OFF SPEED CONTROL DIAL

Five working speeds for versatility and a soft start

START/STOP LEVER

Ergonomic and accurate switch lever

COMPACT AND ERGONOMIC

Extremely lightweight and specifically designed for one handed operation

BATTERY

High torque motor provides identical performance in battery powered or corded mode

| TYPE | HR81M | HR81ML |
|--------------------------|------------------|----------------|
| Voltage VDC (Volt) | 10.8 - 12 | 10.8 - 12 |
| R.P.M | 2000-5000 | 2000-5000 |
| Battery life | ~30min* | ~30min* |
| Charging time | ~20min* | ~20min* |
| Electronic speed control | • | • |
| Overcurrent protection | • | • |
| Soft start | • | • |
| LED indication | • | • |
| Dimensions (mm) | 287x70x47** | 332x70x47** |
| Dimensions (inches) | 11.2x2.75x1.85** | 13x2.75x1.85** |
| Weight (g - lbs) | 470 - 1.04** | 520 - 1.15** |

*The value references use of the battery pack 9HB120LT, fully charged with a charger 9HC120LT and proper use of polisher HR81M/HR81ML and functional unit orbit 12mm with Ø30mm polishing pad.

**Measured without a functional unit, battery pack and power supply.

HR81M/DLX iBrid nano Short Neck Kit



| DESCRIPTION | QUANTITY | CODE |
|---|----------|----------------|
| iBrid Nano Short neck (Included in HR81M/DLX) | 1 | 9.HR81M |
| BIGFOOT Premium Tool Case | 1 | 9.Z932/BF |
| AC-DC adaptor | 1 | 9HP120LT |
| Rechargable power pack | 2 | 9HB120LT |
| Charger | 1 | 9HC120LT |
| Velcro foam polishing pad COARSE Ø30/40mm (1"1/4) | 6 | 9.BF40H |
| Velcro foam polishing pad FINE Ø30/40mm (1"1/4) | 6 | 9.BF40M |
| Velcro foam polishing pad COARSE Ø50/70mm (2") | 4 | 9.BF70H |
| Velcro foam polishing pad FINE Ø50/70mm (2") | 4 | 9.BF70M |
| ZEPHIR polishing compound COARSE 150ml | 1 | 9.BFZEPHIR150 |
| KERAMIK polishing compound FINE 150ml | 1 | 9.BFKERAMIK150 |
| Rotary Functional Unit | 1 | 562.390 |
| 3mm orbit Functional Unit | 1 | 581.390/C |
| 12mm orbit Functional Unit | 1 | 58.390/C |
| Polishing backing pad Ø30mm (1"1/4) | 1 | 995.001 |
| Polishing backing pad Ø50mm (2") | 1 | 996.001 |
| Sanding backing pad Ø30mm (1"1/4) | 1 | 997.001 |
| Horsehair Medium Cup Brush | 1 | 9.BF3000 |
| Nylon Hard Cup Brush | 1 | 9.BF3030 |
| Adhesive Abrasive Discs for denibbing Ø35mm P2000 | 10 | 9.45520 |
| Adhesive Abrasive Discs for denibbing Ø35mm P3000 | 10 | 9.45530 |
| Microfiber Cloths | 1 | 9.BF9010/4 |
| Accessories Case with container | 1 | 9.Z987/BF |

9.HR81M iBrid nano Short Neck



HR81ML/DLX iBrid nano Long Neck Kit



| DESCRIPTION | QUANTITY | CODE |
|---|----------|----------------|
| iBrid Nano Long neck (Included in HR81M/DLX) | 1 | 9.HR81ML |
| BIGFOOT Premium Tool Case | 1 | 9.Z932/BF |
| AC-DC adaptor | 1 | 9HP120LT |
| Rechargable power pack | 2 | 9HB120LT |
| Charger | 1 | 9HC120LT |
| Velcro foam polishing pad COARSE Ø30/40mm (1"1/4) | 6 | 9.BF40H |
| Velcro foam polishing pad FINE Ø30/40mm (1"1/4) | 6 | 9.BF40M |
| Velcro foam polishing pad COARSE Ø50/70mm (2") | 4 | 9.BF70H |
| Velcro foam polishing pad FINE Ø50/70mm (2") | 4 | 9.BF70M |
| ZEPHIR polishing compound COARSE 150ml | 1 | 9.BFZEPHIR150 |
| KERAMIK polishing compound FINE 150ml | 1 | 9.BFKERAMIK150 |
| Rotary Functional Unit | 1 | 562.390 |
| 3mm orbit Functional Unit | 1 | 581.390/C |
| 12mm orbit Functional Unit | 1 | 58.390/C |
| Polishing backing pad Ø30mm (1"1/4) | 1 | 995.001 |
| Polishing backing pad Ø50mm (2") | 1 | 996.001 |
| Sanding backing pad Ø30mm (1"1/4) | 1 | 997.001 |
| Horsehair Medium Cup Brush | 1 | 9.BF3000 |
| Nylon Hard Cup Brush | 1 | 9.BF3030 |
| Adhesive Abrasive Discs for denibbing Ø35mm P2000 | 10 | 9.45520 |
| Adhesive Abrasive Discs for denibbing Ø35mm P3000 | 10 | 9.45530 |
| Microfiber Cloths | 1 | 9.BF9010/4 |
| Accessories Case with container | 1 | 9.Z987/BF |

9.HR81ML iBrid nano Long Neck



PNEUMATIC_____

TOOLS

Polishers
Sanders

BIGFOOT TRIPLE ACTION

RUPES has developed a new type of movement deemed **TRIPLE ACTION**. The power of a motor can be expressed as the product of the torque multiplied by the velocity. During the normal use of a tool, the operator applies a variable load, which by effect of friction on the surface and the work carried out by the motor might be such as to reduce the number of revolutions of the motor. The load applied by the operator during normal use of a tool varies significantly over a measure of time, causing large variations in the number of orbits, consequently reducing the uniformity of the final finish.

A more homogeneous process leads to a significant reduction in working times; delivering consistent and predictable movement from the tool results become consistent and predictable, thus reducing the time required to complete a task. In the case of triple action tools, similar to the movement of DA random orbital tools, the pad follows an orbit and is free to rotate about its own central axis. Thanks to a special epicyclic gear reducer located in front of the cam group, the torque value is significantly increased while at the same time the velocity is reduced. With the use of this solution the impact of a variable in performance (the load applied by the user) is substantially minimized and a greater uniformity of tool performance is realized.

This provides a considerable improvement in the surface finish as well as a drastic reduction in the vibration levels experienced by the operator. The advantages of this configuration are noticeable from the very first use. The addition of the epicyclic gear reducer is a technical innovation that so profoundly improves and changes the functionality of the tool that it merits a new movement category, henceforth known as **TRIPLE ACTION**.



LTA125

Triple Action polisher



LTA75

Triple Action polisher



TRIPLE ACTION



| TECHNICAL DATA | | LTA125 | LTA75 |
|----------------------|-----------|------------|-------------|
| Ø backing pad | mm-in | 125 - 5" | 75 - 3" |
| Ø orbit | mm-in | 12 - 1/2" | 15 - 19/32" |
| Working pressure | bar-PSIG | 6.2 - 90" | 6.2 - 90" |
| Air consumption max | l/min-CFM | 400-14.1 | 380-13.4 |
| R.P.M. | | 0 - 6000 | 0 - 6000 |
| Weight | kg-lbs | 1.3 - 2.13 | 0.90 - 1.15 |
| Speed regulation | | • | • |
| Backing pad supplied | | 980.027N | 990.007 |

LHR 75

Mini random orbital polisher



| TECHNICAL DATA | | LHR 75 |
|----------------------|----------|-------------|
| Ø backing pad | mm-in | 75 - 3" |
| Ø orbit | mm-in | 15 - 19/32" |
| Working pressure | bar/PSIG | 6.2/90 |
| Air consumption max | l/min. | 320 |
| R.P.M. | | 0-11000 |
| Weight | kg-lbs | 0.65 - 1.43 |
| Speed control | | • |
| Spindle thread | | M6-F |
| Air inlet thread | | 1/4"GAS |
| Backing pad supplied | | 990.007 |

LD 30

Orbital sander



| TECHNICAL DATA | | LD 30 |
|-----------------------|----------|-------------|
| Ø orbit | mm | 1,5 |
| Ø backing pad | mm | 30 |
| Working pressure | bar/PSIG | 6.2/90 |
| Air consumption max | l/min. | 130 |
| R.P.M. | | 7500 |
| Weight | kg-lbs | 0.65 - 1.43 |
| Spindle thread | | M10-F |
| Air inlet thread | | 1/4"GAS |
| | | 9P06.060 |
| Backing pads supplied | | 9P06.061 |
| | | 9P06.062 |

TA 50

Mini random orbital sander/polisher



| TECHNICAL DATA | | TA 50 |
|----------------------|----------|-------------|
| Ø orbit | mm | 3 |
| Ø backing pad | mm | 50 |
| Working pressure | bar/PSIG | 6.2/90 |
| Air consumption max | l/min. | 330 |
| R.P.M. | | 15000 |
| Weight | kg-lbs | 0.65 - 1.43 |
| Spindle thread | | M6-F |
| Air conveyor hose | | • |
| Air inlet thread | | 1/4"GAS |
| Backing pad supplied | | 9P01.046 |

RA 75 - RA 75A

Random orbital palm sander



| TECHNICAL DATA | | RA 75 | RA 75A |
|----------------------|----------|------------|------------|
| Ø orbit | mm | 3 | 3 |
| Ø backing pad | mm | 75 | 75 |
| Holes | | - | 3 |
| Working pressure | bar/PSIG | 6.2/90 | 6.2/90 |
| Air consumption max | l/min. | 380 | 380 |
| R.P.M. | | 0-11000 | 0-11000 |
| Weight | kg-lbs | 0.68 - 1.5 | 0.68 - 1.5 |
| Speed control | | • | • |
| Spindle thread | | 5/16"-F | 5/16"-F |
| Central vacuum | | • | • |
| Air inlet thread | | 1/4"GAS | 1/4"GAS |
| Backing pad supplied | | 990.003 | 990.012 |

RE 21ACM

Orbital palm sander



| TECHNICAL DATA | | RE 21ACM |
|---------------------|----------|-----------|
| Ø orbit | mm | 3 |
| Pad size | mm | 80x130 |
| Working pressure | bar/PSIG | 6.2/90 |
| Air consumption max | l/min. | 360 |
| R.P.M. | | 0-11000 |
| Weight | kg-lbs | 0.87-1.9 |
| Speed control | | • |
| Paper clips | | • |
| Velcro pad | | • |
| Central vacuum | | • |
| Air inlet thread | | 1/4" GAS |
| Pad supplied | | 986.007MH |

RE 21ALN

Orbital palm sander



| TECHNICAL DATA | | RE 21ALN |
|---------------------|----------|-----------|
| Ø orbit | mm | 3 |
| Pad size | mm | 70x198 |
| Working pressure | bar/PSIG | 6.2/90 |
| Air consumption max | l/min. | 360 |
| R.P.M. | | 0-11000 |
| Weight | kg-lbs | 0.85-1.87 |
| Speed control | | • |
| Velcro pad | | • |
| Central vacuum | | • |
| Air inlet thread | | 1/4" GAS |
| Pad supplied | | 988.001MH |

SO 210AP

Orbital sander



| TECHNICAL DATA | | SO 210AP |
|---------------------|----------|-----------|
| Ø orbit | mm | 3 |
| Pad size | mm | 225x115 |
| Working pressure | bar/PSIG | 6.2/90 |
| Air consumption max | l/min. | 380 |
| R.P.M. | | 3500-9500 |
| Weight | kg-lbs | 2.4-5.3 |
| Speed control | | • |
| Paper clips | | • |
| Velcro pad | | • |
| Central vacuum | | • |
| Air inlet thread | | 1/4" GAS |
| Pad supplied | | 983.005 |

SLP41A

Orbital sander



| TECHNICAL DATA | | SLP 41A |
|---------------------|----------|------------|
| Ø orbit | mm | 4.8 |
| Pad size | mm | 400x70 |
| Working pressure | bar/PSIG | 6.2/90 |
| Air consumption max | l/min. | 400 |
| R.P.M. | | 4000-10000 |
| Weight | kg-lbs | 2.4-5.3 |
| Speed control | | • |
| Pad size | | • |
| Central vacuum | | • |
| Air inlet thread | | 1/4" GAS |
| Pad supplied | | 619.153MH |

PNEUMATIC TOOLS SANDERS

SKORPIO III Ø125mm Random orbital palm sanders



| | Ø orbit mm | Ø backing pad mm | Velcro | Vinyl | Working pressure bar/PSIG | Air consumption max l/min. - CFM | R.P.M. | Weight kg-lbs | Speed control | Air inlet thread | Spindle thread | Vacuum |
|---|------------------|------------------------|--------|-------|---------------------------------|--|----------|------------------|------------------|---------------------|-------------------|----------------|
| RH323 | 3 | 125 | • | | 6,2/90 | 340 - 12 | 0-11000 | 0.8-1.75 | • | 1/4"GAS | M8-F | - |
| RH326 | 6 | 125 | • | | 6,2/90 | 340 - 12 | 0-11000 | 0.8-1.75 | • | 1/4"GAS | M8-F | - |
| RH329 | 9 | 125 | • | | 6,2/90 | 340 - 12 | 0-11000 | 0.8-1.75 | • | 1/4"GAS | M8-F | - |
| Backing pad supplied 980.015N 8+8+1 HOLES | | | | | | | | | | | | |
| RH323S* | 3 | 125 | • | | 6,2/90 | 340 - 12 | 0-11000 | 0.8-1.75 | • | 1/4"GAS | M8-F | - |
| RH326S* | 6 | 125 | • | | 6,2/90 | 340 - 12 | 0-11000 | 0.8-1.75 | • | 1/4"GAS | M8-F | - |
| RH329S* | 9 | 125 | • | | 6,2/90 | 340 - 12 | 0-11.000 | 0.8-1.75 | • | 1/4"GAS | M8-F | - |
| Backing pad supplied 980.025N 8+8+1 HOLES | | | | | | | | | | | | |
| RH323A | 3 | 125 | • | | 6,2/90 | 340 - 12 | 0-11000 | 0.8-1.75 | • | 1/4"GAS | M8-F | Central |
| RH326A | 6 | 125 | • | | 6,2/90 | 340 - 12 | 0-11000 | 0.8-1.75 | • | 1/4"GAS | M8-F | Central |
| RH329A | 9 | 125 | • | | 6,2/90 | 340 - 12 | 0-11000 | 0.8-1.75 | • | 1/4"GAS | M8-F | Central |
| RH323T* | 3 | 125 | • | | 6,2/90 | 340 - 12 | 0-11000 | 0.8-1.75 | • | 1/4"GAS | M8-F | Self generated |
| RH326T* | 6 | 125 | • | | 6,2/90 | 340 - 12 | 0-11000 | 0.8-1.75 | • | 1/4"GAS | M8-F | Self generated |
| RH329T* | 9 | 125 | • | | 6,2/90 | 340 - 12 | 0-11000 | 0.8-1.75 | • | 1/4"GAS | M8-F | Self generated |
| Backing pad supplied 980.015N 8+8+1 HOLES | | | | | | | | | | | | |

SKORPIO III Ø150mm Random orbital palm sanders



| | Ø orbit mm | Ø backing pad mm | Velcro | Vinyl | Working pressure bar/PSIG | Air consumption max l/min. - CFM | R.P.M. | Weight kg-lbs | Speed control | Air inlet thread | Spindle thread | Vacuum |
|---|------------------|------------------------|--------|-------|---------------------------------|--|---------|------------------|------------------|---------------------|-------------------|----------------|
| RH353 | 3 | 150 | • | | 6,2/90 | 340 - 12 | 0-11000 | 0.8-1.75 | • | 1/4"GAS | M8-F | - |
| RH356 | 6 | 150 | • | | 6,2/90 | 340 - 12 | 0-11000 | 0.8-1.75 | • | 1/4"GAS | M8-F | - |
| RH359 | 9 | 150 | • | | 6,2/90 | 340 - 12 | 0-11000 | 0.8-1.75 | • | 1/4"GAS | M8-F | - |
| Backing pad supplied 981.500 MULTI-HOLE SLIM | | | | | | | | | | | | |
| RH353S* | 3 | 150 | • | | 6,2/90 | 340 - 12 | 0-11000 | 0.8-1.75 | • | 1/4"GAS | M8-F | - |
| RH356S* | 6 | 150 | • | | 6,2/90 | 340 - 12 | 0-11000 | 0.8-1.75 | • | 1/4"GAS | M8-F | - |
| RH359S* | 9 | 150 | • | | 6,2/90 | 340 - 12 | 0-11000 | 0.8-1.75 | • | 1/4"GAS | M8-F | - |
| Backing pad supplied 981.145N MULTI-HOLE SLIM | | | | | | | | | | | | |
| RH353A | 3 | 150 | • | | 6,2/90 | 340 - 12 | 0-11000 | 0.8-1.75 | • | 1/4"GAS | M8-F | Central |
| RH356A | 6 | 150 | • | | 6,2/90 | 340 - 12 | 0-11000 | 0.8-1.75 | • | 1/4"GAS | M8-F | Central |
| RH359A | 9 | 150 | • | | 6,2/90 | 340 - 12 | 0-11000 | 0.8-1.75 | • | 1/4"GAS | M8-F | Central |
| RH353T* | 3 | 150 | • | | 6,2/90 | 340 - 12 | 0-11000 | 0.8-1.75 | • | 1/4"GAS | M8-F | Self generated |
| RH356T* | 6 | 150 | • | | 6,2/90 | 340 - 12 | 0-11000 | 0.8-1.75 | • | 1/4"GAS | M8-F | Self generated |
| RH359T* | 9 | 150 | • | | 6,2/90 | 340 - 12 | 0-11000 | 0.8-1.75 | • | 1/4"GAS | M8-F | Self generated |
| Backing pad supplied 981.500 MULTI-HOLE SLIM | | | | | | | | | | | | |

*All S or T configured sanders are build to order and may require additional time for shipment processing.

PNEUMATIC TOOLS

SANDERS

SKORPIO III

EXPERIENCE THE EXCELLENCE

The **Skorpio III** is what every random orbital sander user needs - an extremely quiet, well balanced tool. The precision engineered pneumatic Skorpio III is the quietest random orbital sander in its class, plus it comes in a choice of orbit sizes to fit your particular application. The body is coated with an anti-slip rubber for better handling, the throttle lever is designed to support the operator's wrist during operation and actually fits perfectly into the tool body to eliminate "pinch points", the internal balancing of the components result in extremely low vibration while the double row bearings ensures greater life and smoother operation.



TA6A

Triple Action Pneumatic Random Orbital Sander



Ergonomic, lightweight and powerful. The TA6A introduces an innovative technology defined as “Triple Action” into the pneumatic sander category. The dual action random orbital movement of this pneumatic tool is combined with epicyclic gear reduction to deliver levels of torque and consistency that were never previously available with air-powered tools. This machine provides incredible balance, high levels of torque and is extremely intuitive and easy to maneuver. The TA6A can be used for sanding operations in several industries that include automotive manufacturing and repair, aviation, marine and industrial.

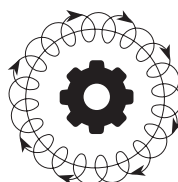
MAIN FEATURES:

HIGH TORQUE EFFICIENCY AND PERFORMANCE

REDUCTION IN WORKING TIMES

EXTREMELY LOW VIBRATION LEVEL

PERFECT BALANCE



TRIPLE ACTION

| TECHNICAL DATA | | TA6A |
|---------------------|----------|------------|
| Ø backing pad | mm-in | 150 - 6" |
| Ø orbit | mm-in | 6 - 1/4" |
| Working pressure | bar-PSIG | 6,2 - 90" |
| Air consumption max | l/min | 400 |
| R.P.M. | | 0 - 8000 |
| Weight | kg-lbs | 1,3 - 28,7 |
| Speed regulation | | • |
| Spindle thread | | M8 |





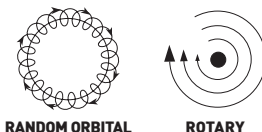
ACCESSORIES

Foam Polishing Pads
Wool Polishing Pads
Microfiber Polishing Pads
Polishing Compounds
BigFoot Nano Accessories
Abrasives
Backing Pads
Car Care Products
Accessories

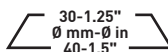


FOAM POLISHING PADS

For iBrid Nano Polishers



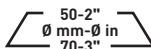
Ø 30-40 mm (1.25" - 1.5")



| Code | Description | Unit |
|--------------|-------------|------------------------|
| ● 9.BF40H/36 | COARSE | 1 carton with 36 foams |
| ● 9.BF40J/36 | MEDIUM | 1 carton with 36 foams |
| ● 9.BF40M/36 | FINE | 1 carton with 36 foams |
| ○ 9.BF40S/36 | ULTRAFINE | 1 carton with 36 foams |
| ● 9.BF40U/36 | UHS | 1 carton with 36 foams |



Ø 50-70 mm (2" - 3")

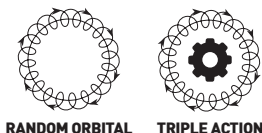


| Code | Description | Unit |
|--------------|-------------|------------------------|
| ● 9.BF70H/24 | COARSE | 1 carton with 24 foams |
| ● 9.BF70J/24 | MEDIUM | 1 carton with 24 foams |
| ● 9.BF70M/24 | FINE | 1 carton with 24 foams |
| ○ 9.BF70S/24 | ULTRAFINE | 1 carton with 24 foams |
| ● 9.BF70U/24 | UHS | 1 carton with 24 foams |

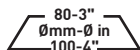


FOAM POLISHING PADS

For Random Orbital and Triple Action Polishers



Ø 80-100 mm (3" - 4")

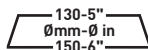


| Code | Description | Unit |
|---------------|-------------|-------------------------|
| ● 9.BF100H/4 | COARSE | 1 carton with 4 foams |
| ● 9.BF100J/4 | MEDIUM | 1 carton with 4 foams |
| ● 9.BF100M/4 | FINE | 1 carton with 4 foams |
| ○ 9.BF100S/4 | ULTRAFINE | 1 carton with 4 foams |
| ● 9.BF100H/32 | COARSE | 1 carton with 32 foams |
| ● 9.BF100J/32 | MEDIUM | 1 carton with 32 foams |
| ● 9.BF100M/32 | FINE | 1 carton with 32 foams |
| ○ 9.BF100S/32 | ULTRAFINE | 1 carton with 32 foams |
| ● 9.BF100H/50 | COARSE | 1 carton with 50 foams* |
| ● 9.BF100J/50 | MEDIUM | 1 carton with 50 foams* |
| ● 9.BF100M/50 | FINE | 1 carton with 50 foams* |
| ○ 9.BF100S/50 | ULTRAFINE | 1 carton with 50 foams* |



* 50 FOAM POLISHING PADS IN 1 BULK

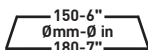
Ø 130-150 mm (5"- 6")



| Code | Description | Unit |
|---------------|-------------|-------------------------|
| ● 9.BF150H/2 | COARSE | 1 carton with 2 foams |
| ● 9.BF150J/2 | MEDIUM | 1 carton with 2 foams |
| ● 9.BF150M/2 | FINE | 1 carton with 2 foams |
| ○ 9.BF150S/2 | ULTRAFINE | 1 carton with 2 foams |
| ● 9.BF150H/16 | COARSE | 1 carton with 16 foams |
| ● 9.BF150J/16 | MEDIUM | 1 carton with 16 foams |
| ● 9.BF150M/16 | FINE | 1 carton with 16 foams |
| ○ 9.BF150S/16 | ULTRAFINE | 1 carton with 16 foams |
| ● 9.BF150H/50 | COARSE | 1 carton with 50 foams* |
| ● 9.BF150J/50 | MEDIUM | 1 carton with 50 foams* |
| ● 9.BF150M/50 | FINE | 1 carton with 50 foams* |
| ○ 9.BF150S/50 | ULTRAFINE | 1 carton with 50 foams* |



Ø 150-180 mm (6"- 7")

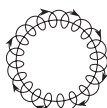


| Code | Description | Unit |
|---------------|-------------|-------------------------|
| ● 9.BF180H/2 | COARSE | 1 carton with 2 foams |
| ● 9.BF180J/2 | MEDIUM | 1 carton with 2 foams |
| ● 9.BF180M/2 | FINE | 1 carton with 2 foams |
| ○ 9.BF180S/2 | ULTRAFINE | 1 carton with 2 foams |
| ● 9.BF180H/16 | COARSE | 1 carton with 16 foams |
| ● 9.BF180J/16 | MEDIUM | 1 carton with 16 foams |
| ● 9.BF180M/16 | FINE | 1 carton with 16 foams |
| ○ 9.BF180S/16 | ULTRAFINE | 1 carton with 16 foams |
| ● 9.BF180H/50 | COARSE | 1 carton with 50 foams* |
| ● 9.BF180J/50 | MEDIUM | 1 carton with 50 foams* |
| ● 9.BF180M/50 | FINE | 1 carton with 50 foams* |
| ○ 9.BF180S/50 | ULTRAFINE | 1 carton with 50 foams* |



UHS FOAM POLISHING PADS

For Random Orbital and Triple Action Polishers



RANDOM ORBITAL



TRIPLE ACTION

| Code | Description | Ø mm | Ø in | Unit |
|-------------|-------------|---------|-------|-------------------------|
| 9.BF100U/4 | MEDIUM | 80-100 | 3"-4" | 1 carton with 4 foams |
| 9.BF100U/32 | MEDIUM | 80-100 | 3"-4" | 1 carton with 32 foams |
| 9.BF100U/50 | MEDIUM | 80-100 | 3"-4" | 1 carton with 50 foams* |
| 9.BF150U/2 | MEDIUM | 130-150 | 5"-6" | 1 carton with 2 foams |
| 9.BF150U/16 | MEDIUM | 130-150 | 5"-6" | 1 carton with 16 foams |
| 9.BF150U/50 | MEDIUM | 130-150 | 5"-6" | 1 carton with 50 foams* |
| 9.BF180U/2 | MEDIUM | 150-180 | 6"-7" | 1 carton with 2 foams |
| 9.BF180U/16 | MEDIUM | 150-180 | 6"-7" | 1 carton with 16 foams |
| 9.BF180U/50 | MEDIUM | 150-180 | 6"-7" | 1 carton with 50 foams* |



* 50 FOAM POLISHING PADS IN 1 BULK





FOAM POLISHING PADS

For Rotary Polishers



Ø 135 mm (5.25")

135-5.25"
Ømm-Ø in
135-5.25"

| Code | Description | Unit |
|---------------|-------------|-------------------------|
| ● 9.BR150H/2 | COARSE | 1 carton with 2 foams |
| ● 9.BR150M/2 | FINE | 1 carton with 2 foams |
| ○ 9.BR150S/2 | ULTRAFINE | 1 carton with 2 foams |
| ● 9.BR150H/16 | COARSE | 1 carton with 16 foams |
| ● 9.BR150M/16 | FINE | 1 carton with 16 foams |
| ○ 9.BR150S/16 | ULTRAFINE | 1 carton with 16 foams |
| ● 9.BR150H/50 | COARSE | 1 carton with 50 foams* |
| ● 9.BR150M/50 | FINE | 1 carton with 50 foams* |
| ○ 9.BR150S/50 | ULTRAFINE | 1 carton with 50 foams* |



Ø 160 mm (6.25")

160-6.25"
Ømm-Ø in
160-6.25"

| Code | Description | Unit |
|---------------|-------------|-------------------------|
| ● 9.BR180H/2 | COARSE | 1 carton with 2 foams |
| ● 9.BR180M/2 | FINE | 1 carton with 2 foams |
| ○ 9.BR180S/2 | ULTRAFINE | 1 carton with 2 foams |
| ● 9.BR180H/16 | COARSE | 1 carton with 16 foams |
| ● 9.BR180M/16 | FINE | 1 carton with 16 foams |
| ○ 9.BR180S/16 | ULTRAFINE | 1 carton with 16 foams |
| ● 9.BR180H/50 | COARSE | 1 carton with 50 foams* |
| ● 9.BR180M/50 | FINE | 1 carton with 50 foams* |
| ○ 9.BR180S/50 | ULTRAFINE | 1 carton with 50 foams* |



Ø 180 mm (7")

180-7"
Ømm-Ø in
180-7"

| Code | Description | Unit |
|---------------|-------------|-------------------------|
| ● 9.BR200H/2 | COARSE | 1 carton with 2 foams |
| ● 9.BR200M/2 | FINE | 1 carton with 2 foams |
| ○ 9.BR200S/2 | ULTRAFINE | 1 carton with 2 foams |
| ● 9.BR200H/16 | COARSE | 1 carton with 16 foams |
| ● 9.BR200M/16 | FINE | 1 carton with 16 foams |
| ○ 9.BR200S/16 | ULTRAFINE | 1 carton with 16 foams |
| ● 9.BR200H/50 | COARSE | 1 carton with 50 foams* |
| ● 9.BR200M/50 | FINE | 1 carton with 50 foams* |
| ○ 9.BR200S/50 | ULTRAFINE | 1 carton with 50 foams* |



* 50 FOAM POLISHING PADS IN 1 BULK

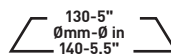


FOAM POLISHING PADS

For Gear Driven Polishers



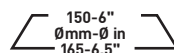
Ø 130-140 mm (5" - 5.5")



| Code | Description | Unit |
|---------------|-------------|-------------------------|
| ● 9.BG150H/2 | COARSE | 1 carton with 2 foams |
| ● 9.BG150M/2 | FINE | 1 carton with 2 foams |
| ○ 9.BG150S/2 | ULTRAFINE | 1 carton with 2 foams |
| ● 9.BG150H/16 | COARSE | 1 carton with 16 foams |
| ● 9.BG150M/16 | FINE | 1 carton with 16 foams |
| ○ 9.BG150S/16 | ULTRAFINE | 1 carton with 16 foams |
| ● 9.BG150H/50 | COARSE | 1 carton with 50 foams* |
| ● 9.BG150M/50 | FINE | 1 carton with 50 foams* |
| ○ 9.BG150S/50 | ULTRAFINE | 1 carton with 50 foams* |



Ø 150-165 mm (6" - 6.5")



| Code | Description | Unit |
|---------------|-------------|-------------------------|
| ● 9.BG180H/2 | COARSE | 1 carton with 2 foams |
| ● 9.BG180M/2 | FINE | 1 carton with 2 foams |
| ○ 9.BG180S/2 | ULTRAFINE | 1 carton with 2 foams |
| ● 9.BG180H/16 | COARSE | 1 carton with 16 foams |
| ● 9.BG180M/16 | FINE | 1 carton with 16 foams |
| ○ 9.BG180S/16 | ULTRAFINE | 1 carton with 16 foams |
| ● 9.BG180H/50 | COARSE | 1 carton with 50 foams* |
| ● 9.BG180M/50 | FINE | 1 carton with 50 foams* |
| ○ 9.BG180S/50 | ULTRAFINE | 1 carton with 50 foams* |



"WHY ARE THERE DIFFERENT PAD SHAPES?"

Each different type of tool movement presents a unique set of challenges to balance. Ultimately the goal is to provide maximum performance in harmony with operator comfort. The large orbit of the LHR21, for example, requires precise pad weights to provide smooth operation and efficient transfer of energy. The Mille Gear-Driven generates large amounts of torque steer while the rotary generates the highest amount of heat on the surface. Each corresponding pad system works in harmony with the tool movement and designated compound formulas to provide the best possible user experience and performance on the surface..



* 50 FOAM POLISHING PADS IN 1 BULK

ORBITAL WOOL POLISHING PADS

For Random Orbital, Gear Driven and Triple Action Polishers



RANDOM ORBITAL



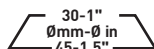
GEAR DRIVEN



TRIPLE ACTION



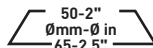
Ø 30-45 mm (1" - 1.5")



| Code | Description | Unit |
|--------------|-------------|-----------------------|
| • 9.BW40H/24 | COARSE | 1 carton with 24 pads |
| • 9.BW40M/24 | MEDIUM | 1 carton with 24 pads |



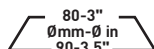
Ø 50-65 mm (2" - 2.5")



| Code | Description | Unit |
|--------------|-------------|-----------------------|
| • 9.BW70H/24 | COARSE | 1 carton with 24 pads |
| • 9.BW70M/24 | MEDIUM | 1 carton with 24 pads |



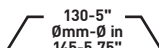
Ø 80-90 mm (3" - 3.5")



| Code | Description | Unit |
|---------------|-------------|-----------------------|
| • 9.BW100H/2 | COARSE | 1 carton with 2 pads |
| • 9.BW100M/2 | MEDIUM | 1 carton with 2 pads |
| • 9.BW100H/16 | COARSE | 1 carton with 16 pads |
| • 9.BW100M/16 | MEDIUM | 1 carton with 16 pads |
| • 9.BW100H/50 | COARSE | 1 carton with 50 pads |
| • 9.BW100M/50 | MEDIUM | 1 carton with 50 pads |



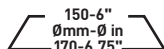
Ø 130-145 mm (5" - 5.7")



| Code | Description | Unit |
|---------------|-------------|-----------------------|
| • 9.BW150H/2 | COARSE | 1 carton with 2 pads |
| • 9.BW150M/2 | MEDIUM | 1 carton with 2 pads |
| • 9.BW150H/16 | COARSE | 1 carton with 16 pads |
| • 9.BW150M/16 | MEDIUM | 1 carton with 16 pads |
| • 9.BW150H/50 | COARSE | 1 carton with 50 pads |
| • 9.BW150M/50 | MEDIUM | 1 carton with 50 pads |



Ø 150-170 mm (6" - 6.75")



| Code | Description | Unit |
|---------------|-------------|-----------------------|
| • 9.BW180H/2 | COARSE | 1 carton with 2 pads |
| • 9.BW180M/2 | MEDIUM | 1 carton with 2 pads |
| • 9.BW180H/16 | COARSE | 1 carton with 16 pads |
| • 9.BW180M/16 | MEDIUM | 1 carton with 16 pads |
| • 9.BW180H/50 | COARSE | 1 carton with 50 pads |
| • 9.BW180M/50 | MEDIUM | 1 carton with 50 pads |



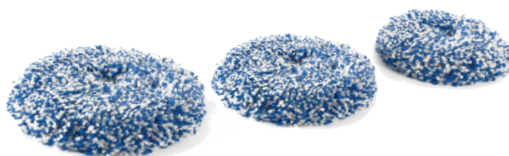
ROTARY WOOL POLISHING PADS

For Rotary Polishers

NEW



ROTARY



| Code | Description | Unit |
|---------------|---------------------------------|------------------------|
| • 9.BL180H | for Ø125mm / Ø5" backing pads | 1 pad, retail packaged |
| • 9.BL180H/50 | for Ø125mm / Ø5" backing pads | 1 carton with 50 pads |
| • 9.BL200H | for Ø150mm / Ø 6" backing pads | 1 pad, retail packaged |
| • 9.BL200H/50 | for Ø150mm / Ø 6" backing pads | 1 carton with 50 pads |
| • 9.BL230H | for Ø165mm / Ø6.5" backing pads | 1 pad, retail packaged |
| • 9.BL230H/50 | for Ø165mm / Ø6.5" backing pads | 1 carton with 50 pads |

MICROFIBER POLISHING PADS

For Random Orbital and Triple Action Polishers



RANDOM ORBITAL



TRIPLE ACTION

Ø 80-100 mm (3"- 4")

80-3"
Ømm-Ø in
100-4"

| Code | Description | Unit |
|----------------|-------------|------------------------|
| • 9.BF100FH/2 | COARSE | 1 carton with 2 pads |
| • 9.BF100FM/2 | FINE | 1 carton with 2 pads |
| • 9.BF100FH/16 | COARSE | 1 carton with 16 pads |
| • 9.BF100FM/16 | FINE | 1 carton with 16 pads |
| • 9.BF100FH/50 | COARSE | 1 carton with 50 pads* |
| • 9.BF100FM/50 | FINE | 1 carton with 50 pads* |

Ø 130-150 mm (5"- 6")

130-5"
Ømm-Ø in
150-6"

| Code | Description | Unit |
|----------------|-------------|------------------------|
| • 9.BF150FH/2 | COARSE | 1 carton with 2 pads |
| • 9.BF150FM/2 | FINE | 1 carton with 2 pads |
| • 9.BF150FH/16 | COARSE | 1 carton with 16 pads |
| • 9.BF150FM/16 | FINE | 1 carton with 16 pads |
| • 9.BF150FH/50 | COARSE | 1 carton with 50 pads* |
| • 9.BF150FM/50 | FINE | 1 carton with 50 pads* |

Ø 150-150 mm (6"- 6")

150-6"
Ømm-Ø in
150-6"

| Code | Description | Unit |
|----------------|-------------|------------------------|
| • 9.BF170FH/2 | COARSE | 1 carton with 2 pads |
| • 9.BF170FM/2 | FINE | 1 carton with 2 pads |
| • 9.BF170FH/16 | COARSE | 1 carton with 16 pads |
| • 9.BF170FM/16 | FINE | 1 carton with 16 pads |
| • 9.BF170FH/50 | COARSE | 1 carton with 50 pads* |
| • 9.BF170FM/50 | FINE | 1 carton with 50 pads* |

PATENT BY
RUPES



POLISHING COMPOUNDS FOR RANDOM ORBITAL AND TRIPLE ACTION POLISHERS



TRIPLE ACTION



RANDOM ORBITAL



150 ml

| Code | Description | Unit |
|--------------------|-------------|-------------------------|
| ● 9.BFZEPHIR150/6 | COARSE | 1 carton with 6 bottles |
| ● 9.BFQUARZ150/6 | MEDIUM | 1 carton with 6 bottles |
| ● 9.BFKERAMIK150/6 | FINE | 1 carton with 6 bottles |
| ○ 9.BFDIAMOND150/6 | ULTRAFINE | 1 carton with 6 bottles |



250 ml

| Code | Description | Unit |
|--------------------|-------------|-------------------------|
| ● 9.BFZEPHIR250/6 | COARSE | 1 carton with 6 bottles |
| ● 9.BFQUARZ250/6 | MEDIUM | 1 carton with 6 bottles |
| ● 9.BFKERAMIK250/6 | FINE | 1 carton with 6 bottles |
| ○ 9.BFDIAMOND250/6 | ULTRAFINE | 1 carton with 6 bottles |



1000 ml/5L

| Code | Description | Unit |
|------------------|-------------|-------------------------|
| ● 9.BFZEPHIR/8 | COARSE | 1 carton with 8 bottles |
| ● 9.BFQUARZ/8 | MEDIUM | 1 carton with 8 bottles |
| ● 9.BFKERAMIK/8 | FINE | 1 carton with 8 bottles |
| ○ 9.BFDIAMOND/8 | ULTRAFINE | 1 carton with 8 bottles |
| 9.BFZEPHIR 5L/2 | COARSE | 1 carton with 2 tanks |
| 9.BFQUARZ 5L/2 | MEDIUM | 1 carton with 2 tanks |
| 9.BFKERAMIK 5L/2 | FINE | 1 carton with 2 tanks |
| 9.BFDIAMOND 5L/2 | ULTRAFINE | 1 carton with 2 tanks |



UHS EASY GLOSS

High Solids Clear Coat Correction Compound

| Code | Description | Size | Unit |
|----------------|-------------|--------|-------------------------|
| ● 9.BFUHS/8 | MEDIUM | 1000ml | 1 carton with 8 bottles |
| ● 9.BFUHS250/6 | MEDIUM | 250ml | 1 carton with 6 bottles |
| ● 9.BFUHS150/6 | MEDIUM | 150ml | 1 carton with 6 bottles |
| ● 9.BFUHS 5L/2 | MEDIUM | 5l | 1 carton with 2 tanks |

POLISHING COMPOUNDS FOR GEAR DRIVEN POLISHERS



GEAR DRIVEN



250 ml

| Code | Description | Unit |
|----------------------|-------------|-------------------------|
| ● 9.BGCOARSE250/6 | COARSE | 1 carton with 6 bottles |
| ● 9.BGFINE250/6 | FINE | 1 carton with 6 bottles |
| ○ 9.BGULTRAFINE250/6 | ULTRAFINE | 1 carton with 6 bottles |



1000 ml

| Code | Description | Unit |
|-------------------|-------------|-------------------------|
| ● 9.BGCOARSE/8 | COARSE | 1 carton with 8 bottles |
| ● 9.BGFINE/8 | FINE | 1 carton with 8 bottles |
| ○ 9.BGULTRAFINE/8 | ULTRAFINE | 1 carton with 8 bottles |

POLISHING COMPOUNDS FOR ROTARY POLISHERS



ROTARY



250 ml

| Code | Description | Unit |
|----------------------|-------------|-------------------------|
| ● 9.BRCOARSE250/6 | COARSE | 1 carton with 6 bottles |
| ● 9.BRFINE250/6 | FINE | 1 carton with 6 bottles |
| ○ 9.BRULTRAFINE250/6 | ULTRAFINE | 1 carton with 6 bottles |



1000 ml

| Code | Description | Unit |
|-------------------|-------------|-------------------------|
| ● 9.BRCOARSE/8 | COARSE | 1 carton with 8 bottles |
| ● 9.BRFINE/8 | FINE | 1 carton with 8 bottles |
| ○ 9.BRULTRAFINE/8 | ULTRAFINE | 1 carton with 8 bottles |

ACCESSORIES

BIGFOOT IBRID NANO



| Code | Description |
|-----------|-------------|
| 9.Z933/BF | Nano Bag |

POWER SUPPLY



| Code | Description |
|----------|---------------|
| 9HP120LT | AC-DC adaptor |



| Code | Description |
|----------|-------------|
| 9HC120LT | Charger |



| Code | Description |
|----------|-------------------------|
| 9HB120LT | Rechargeable power pack |

BACKING PADS



Ø50mm - Ø2"

| Code | Description | Interface | Unit |
|-----------|-----------------------|-----------|------|
| 996.001/5 | Polishing backing pad | Velcro | 5 |



Ø30mm - Ø1.25"

| Code | Description | Interface | Unit |
|-----------|-----------------------|-----------|------|
| 995.001/5 | Polishing backing pad | Velcro | 5 |



Ø30mm - Ø1.25"

| Code | Description | Interface | Unit |
|-----------|---------------------|-----------|------|
| 997.001/5 | Sanding backing pad | Adhesive | 5 |

ACCESSORIES

BIGFOOT IBRID NANO

Accessories not included



| Code | Description |
|-----------|---------------------------------|
| 9.Z987/BF | Accessories Case with container |

CLEANING CUP BRUSHES



| Code | Description | Size | Unit |
|------------|------------------|------|-------------------------|
| 9.BF3015/6 | NYLON SOFT | Ø30 | 1 carton with 6 brushes |
| 9.BF3030/6 | NYLON HARD | Ø30 | 1 carton with 6 brushes |
| 9.BF3000/6 | HORSEHAIR MEDIUM | Ø30 | 1 carton with 6 brushes |

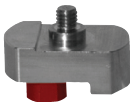
FUNCTIONAL UNITS



| Code | Description |
|---------|-----------------------|
| 562.390 | Rotary Fuctional Unit |



| Code | Description |
|-----------|--------------------------|
| 581.390/C | 3mm orbit Fuctional Unit |



| Code | Description |
|----------|---------------------------|
| 58.390/C | 12mm orbit Fuctional Unit |

ABRASIVES

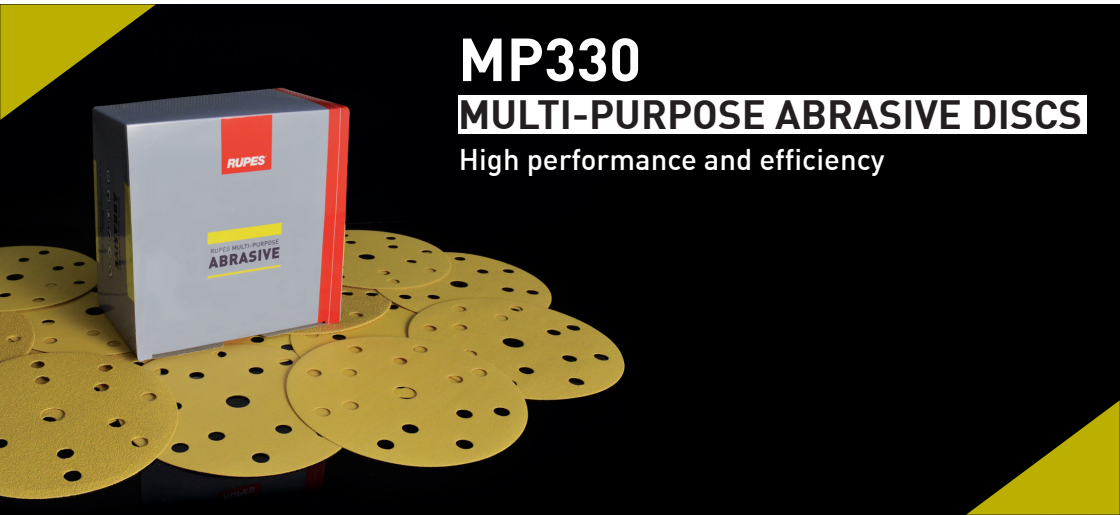


| Code | Description |
|-------------|---|
| 9.45520/100 | Adhesive Disc for Denibbing - Ø35mm - P2000 (100 Pcs) |



| Code | Description |
|-------------|---|
| 9.45530/100 | Adhesive Disc for Denibbing - Ø35mm - P3000 (100 Pcs) |





MP330

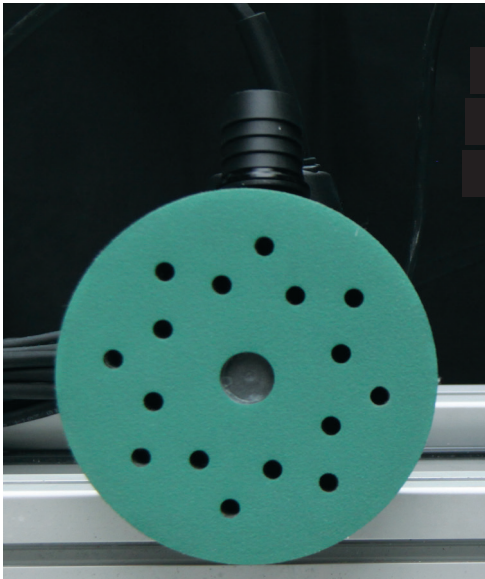
MULTI-PURPOSE ABRASIVE DISCS

High performance and efficiency



| CODE | DESCRIPTION | | GRAIN | HOLES | QUANTITY |
|---------|------------------------------------|-------------|-------|-------|----------|
| 9.33060 | MP330 Multi-Purpose Abrasive Paper | Ø150mm (6") | P60 | 15 | 50 |
| 9.33080 | MP330 Multi-Purpose Abrasive Paper | Ø150mm (6") | P80 | 15 | 50 |
| 9.33100 | MP330 Multi-Purpose Abrasive Paper | Ø150mm (6") | P100 | 15 | 100 |
| 9.33120 | MP330 Multi-Purpose Abrasive Paper | Ø150mm (6") | P120 | 15 | 100 |
| 9.33150 | MP330 Multi-Purpose Abrasive Paper | Ø150mm (6") | P150 | 15 | 100 |
| 9.33180 | MP330 Multi-Purpose Abrasive Paper | Ø150mm (6") | P180 | 15 | 100 |
| 9.33220 | MP330 Multi-Purpose Abrasive Paper | Ø150mm (6") | P220 | 15 | 100 |
| 9.33240 | MP330 Multi-Purpose Abrasive Paper | Ø150mm (6") | P240 | 15 | 100 |
| 9.33280 | MP330 Multi-Purpose Abrasive Paper | Ø150mm (6") | P280 | 15 | 100 |
| 9.33320 | MP330 Multi-Purpose Abrasive Paper | Ø150mm (6") | P320 | 15 | 100 |
| 9.33400 | MP330 Multi-Purpose Abrasive Paper | Ø150mm (6") | P400 | 15 | 100 |
| 9.33500 | MP330 Multi-Purpose Abrasive Paper | Ø150mm (6") | P500 | 15 | 100 |

HQ400 FILM ABRASIVES
ALL THAT YOU NEED
TO MAKE YOUR
RESULTS PERFECT



RUPES polyeser film backed abrasives

With a perforated polyester film backing these discs ensure higher sanding efficiency and extended abrasive life while delivering a smoother, more predictable finish.

| Description | Grain | Holes | Unit | Code |
|----------------------------|-------|-------|------|---------|
| HQ400 film 150mm (6") disc | P40 | 15 | 50 | 9.45220 |
| HQ400 film 150mm (6") disc | P60 | 15 | 50 | 9.45221 |
| HQ400 film 150mm (6") disc | P80 | 15 | 100 | 9.45222 |
| HQ400 film 150mm (6") disc | P100 | 15 | 100 | 9.45223 |
| HQ400 film 150mm (6") disc | P120 | 15 | 100 | 9.45224 |
| HQ400 film 150mm (6") disc | P150 | 15 | 100 | 9.45225 |
| HQ400 film 150mm (6") disc | P180 | 15 | 100 | 9.45226 |
| HQ400 film 150mm (6") disc | P220 | 15 | 100 | 9.45227 |
| HQ400 film 150mm (6") disc | P280 | 15 | 100 | 9.45228 |
| HQ400 film 150mm (6") disc | P320 | 15 | 100 | 9.45229 |
| HQ400 film 150mm (6") disc | P360 | 15 | 100 | 9.45230 |
| HQ400 film 150mm (6") disc | P400 | 15 | 100 | 9.45231 |
| HQ400 film 150mm (6") disc | P600 | 15 | 100 | 9.45233 |
| HQ400 film 150mm (6") disc | P800 | 15 | 100 | 9.45234 |
| HQ400 film 150mm (6") disc | P1000 | 15 | 100 | 9.45235 |
| HQ400 film 150mm (6") disc | P1200 | 15 | 100 | 9.45236 |
| HQ400 film 150mm (6") disc | P1500 | 15 | 100 | 9.45237 |
| HQ400 film 150mm (6") disc | P2000 | 15 | 100 | 9.45238 |

X-CUT FOAM ABRASIVES

RUPES foam backed abrasives

Designed to generate a uniform finish that can easily be compounded and polished to a high gloss. X-Cut foam backed abrasives are a great solution that is optimized for wet sanding applications on a variety of surfaces.

TECHNICAL SPECIFICATION

- Grain: Aluminium Oxide
- Backing: Fabric on foam
- Bond: Resin over resin
- Coating: Special coating on the fabric
- Grit range: 1500 - 2000 - 3000

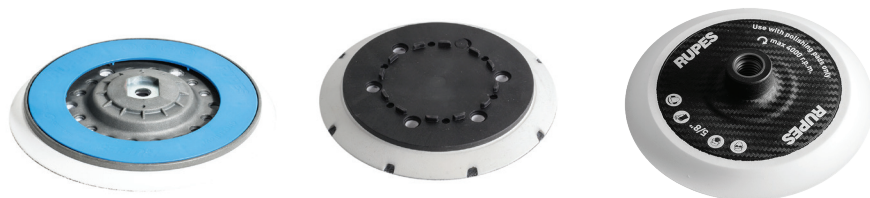


| Description | Grain | Unit | Code |
|---|-------|------------------------|---------|
| X-Cut Foam Abrasives Ø75mm (3") | P1500 | 1 carton with 20 discs | 9.45450 |
| X-Cut Foam Abrasives Ø75mm (3") | P2000 | 1 carton with 20 discs | 9.45451 |
| X-Cut Foam Abrasives Ø75mm (3") | P3000 | 1 carton with 20 discs | 9.45453 |
| X-Cut Foam Abrasives Ø125mm (5") | P1500 | 1 carton with 20 discs | 9.45400 |
| X-Cut Foam Abrasives Ø125mm (5") | P2000 | 1 carton with 20 discs | 9.45401 |
| X-Cut Foam Abrasives Ø125mm (5") | P3000 | 1 carton with 20 discs | 9.45403 |
| X-Cut Foam Abrasives Ø150mm (6") | P1500 | 1 carton with 20 discs | 9.45300 |
| X-Cut Foam Abrasives Ø150mm (6") | P2000 | 1 carton with 20 discs | 9.45301 |
| X-Cut Foam Abrasives Ø150mm (6") | P3000 | 1 carton with 20 discs | 9.45303 |



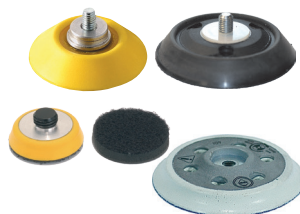
| Ø mm - in | Interface | Holes | Tool | Fitting | Part Code |
|-----------|-----------|----------------|------|-----------|-----------|
| 150 - 6 | Velcro | MULTIHOLE SLIM | TA | 5/16" - M | 981.600 |
| 150 - 6 | Velcro | MULTIHOLE SLIM | TA | M8 - M | 981.500 |
| 150 - 6 | Vinyl | 8+8+1 | RH | M8 - M | 981.145 |
| 125 - 5 | Velcro | 8+8+1 | RH | M8 - M | 980.015N |
| 125 - 5 | Vinyl | 8+8+1 | RH | M8 - M | 980.025N |

*981.500 standard on all RH35_sanders and 980.015N standard on all RH32_sanders, except S series.



| Ø mm - in | Interface | Holes | Tool | Fitting | Part Code |
|-----------|-------------|-----------|----------------------|---------|-----------|
| 150 - 6 | Velcro SLIM | MULTIHOLE | LHR21 | M8 - M | 981.321N |
| 125 - 5 | Velcro SLIM | MULTIHOLE | LHR15, LHR12, LTA125 | M6 - M | 980.027N |
| 150 - 6 | Velcro | 6+8+1 | LK900E | 6 x M4 | 981.089 |
| 125 - 5 | Velcro | 6+1 | LK900E | 6 x M4 | 980.037 |
| 165 - 6.5 | Velcro | - | LH19E | 5/8" F | 982.650 |
| 150 - 6 | Velcro | - | LH19E | 5/8" F | 982.600 |
| 125 - 5 | Velcro | - | LH19E | 5/8" F | 982.500 |

| Ø mm - in | Interface | Holes | Tool | Fitting | Part Code |
|-----------|-----------------|-------|-------|-----------|-----------|
| 30 - 1.2 | Vinyl | - | LD30 | M10-M | 9P06.060 |
| 30 - 1.2 | Velcro | - | LD30 | M10-M | 9P06.061 |
| 30 - 1.2 | Velcro to vinyl | - | LD30 | N/A | 9P06.062 |
| 50 - 2 | Velcro | - | TA50 | M6-M | 9P01.046 |
| 75 - 3 | Velcro | - | RA75 | 5/16" - M | 990.003 |
| 75 - 3 | Velcro | 3 | RA75A | 5/16" - M | 990.012 |
| 75 - 3 | Velcro | - | LHR75 | M6 - M | 990.007 |



CONSUMABLES

CAR CARE PRODUCTS

M707

Carnauba High Gloss
Protective Shampoo



M101

High Concentrated
Detailing Shampoo



M501

Multi Purpose Degreaser



M606

Rapid Cleaner Detailer



| Description | Size | Code |
|---|--------------|----------|
| M707 - Carnauba High Gloss Protective Shampoo | bottle 500ml | 9.CCM707 |
| M101 - High Concentrated Detailing Shampoo | bottle 500ml | 9.CCM101 |
| M501 - Multi Purpose Degreaser | bottle 500ml | 9.CCM501 |
| M606 - Rapid Cleaner Detailer | bottle 500ml | 9.CCM606 |

CONSUMABLES *CAR CARE PRODUCTS*

P808
Protective Sealant



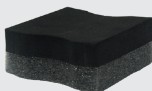
G401
Glass Cleaner



C701
Wheel Fast Cleaner



G202
Crystal Glass Polish



L301
Leather Fast Cleaner



| Description | Size | Code |
|--|---------------|-----------------|
| P808 - Protective Sealant | bottle 500ml | 9.CCP808 |
| G401 - Glass Cleaner [1 Microfiber cloth included] | bottle 500ml | 9.CCG401 |
| C701 - Wheel Fast Cleaner | bottle 1000ml | 9.CCC701 |
| G202 - Crystal Glass Polish [1 Foam applicator code included] | bottle 150ml | 9.CCG202 |
| L301 - Leather Fast Cleaner [4 Melamine sponges included] | bottle 500ml | 9.CCL301 |

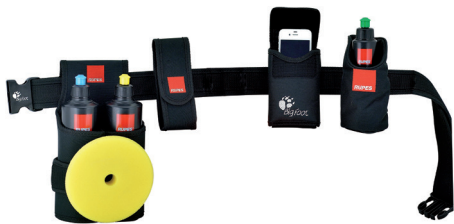
SWIRL FINDER PEN LIGHT

| Code | Description |
|-------|------------------------|
| LL150 | Swirl finder pen light |

Battery 2xAAA/1.5V Alkaline



BIGFOOT BELT



| Code | Description |
|-----------|--------------|
| 9.Z884/BF | BigFoot belt |

BIGFOOT KNEE PADS



| Code | Description |
|-----------|-------------------|
| 9.Z891/BF | BigFoot knee pads |

MICROFIBER CLOTHS

| Code | Description |
|------------|---|
| 9.BF9010/4 | Microfiber polishing cloths, 4 pcs (Blue, Green, Yellow, White) |



CABLE MANAGEMENT

| Code | Description |
|---------|-------------|
| 9.Z1024 | Cable Clamp |



BIGFOOT CLAW PAD TOOL

| Code | Description |
|----------|-----------------------------------|
| 9.BF7001 | BigFoot Claw Pad Tool |
| 9.BF7002 | BigFoot Claw Pad Tool with holder |





BIGFOOT WALL MOUNTED TOOL HOLDER

| Code | Description |
|----------|----------------------------------|
| 9.HOLDER | BigFoot Wall Mounted Tool Holder |

Mounting kit included



RANDOM ORBITAL BIGFOOT BAG

| Code | Description | Dimension (cm) |
|-----------|-----------------------|-----------------|
| 9.Z871/BF | Semirigid BigFoot bag | 50L x 30H x 25W |



MILLE BIGFOOT BAG

| Code | Description | Dimension (cm) |
|-----------|-----------------------|-----------------|
| 9.Z999/BF | Semirigid BigFoot bag | 50L x 30H x 25W |



ROTARY BIGFOOT BAG

| Code | Description | Dimension (cm) |
|-----------|-----------------------|-----------------|
| 9.Z998/BF | Semirigid BigFoot bag | 50L x 30H x 25W |



RUPES WHEELED BACKPACK



| Code | Description | Dimension (cm) |
|---------|------------------|-----------------|
| 9.Z1044 | Wheeled backpack | 34L x 50H x 22W |

BIGFOOT BIG BAG



| Code | Description | Dimension (cm) |
|-----------|-----------------------|-----------------|
| 9.Z917/BF | Semirigid BigFoot Bag | 55L x 43H x 35W |





VACUUM SYSTEMS

Portable Dust Extraction
Vacuum Accessories

S145 Professional Vacuum Dust Extraction System

Clean working environments, better results, improved efficiency, reduced abrasive costs, and increased operator safety are just some of the numerous benefits that a professional vacuum dust extraction system by RUPES can provide for your business. With class leading performance and innovation the S145 delivers incredible value for shops of virtually any size.

Contact your local authorized RUPES distributor to schedule a demonstration and see how a dust extraction system by RUPES can save you up to 40% in labor time and abrasive costs annually.



COST
REDUCTION

HEALTH
PROTECTION

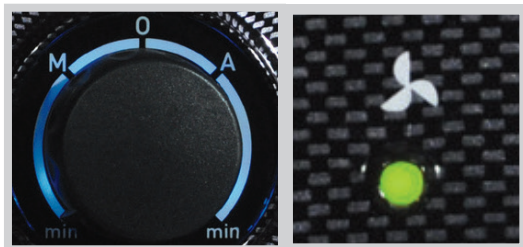
LONGER
TOOL LIFE

HIGH
PERFORMANCE

| S145 TECHNICAL SPECIFICATIONS | | |
|--------------------------------------|---|--------------|
| Power | Watts | 1x1200 |
| Weight | Kg - lbs | 13.5 - 29.76 |
| Max. power supplied by power outlets | Watts | 2400 |
| Pressure | mm/h ₂ O - in/h ₂ O | 2000 - 788 |
| Noise level | dB(A) | 73* |
| Container volume | l - gal | 45 - 12 |
| Air flow rate | m ³ /h - ft ³ /h | 165 - 5827** |
| Indicated for dust classes | | L - M |
| Electrical outlets for tools | | 1 |
| Pneumatic outlets for tools | | 2 |
| Pneumatic connections for tools | versions | P |
| Automatic filter cleaning | | Yes |
| Ø internal connector attachment | mm - in | 50 - 2 |

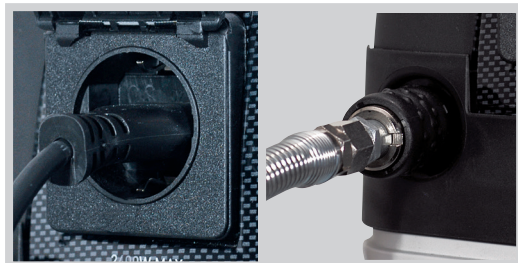


*dB(A) According to EN 60704-3 standard
**According to EN 60335-269 standard



S.C.S. - Smart Control System

Simple, intuitive controls allow operators to select manual or automatic mode as well as regulate vacuum power from 350 W to 1200 W in either mode. High visibility multi-function LED indicators provide clear signals of system status and performance.



Multiple Tool Connections

Multiple connection types for multiple tools. Onboard electrical connection for up to 2400 W of power and two pneumatic connections for supplying air for up to two pneumatic tools simultaneously. All connections are capable of activating the vacuum system when in automatic mode.



Integrated Storage

Integrated storage on the top of the S145 extractor is ideal for holding tools, abrasives, and related attachments. A generously sized rear compartment stores hoses, pneumatic lines, cords or attachments.

DUST EXTRACTION

PORTABLE VACUUM SYSTEMS



S145 Vacuum System 2 Sander Kit

- 1 X S145EPL Portable professional dust extraction system
- 2 X Skorpio III central vacuum pneumatic palm sanders
- 1 X Tool holder/handle attachment (cod. 049.1108/C)
- 2 X Antistatic coaxial hose for pneumatic tools
- 1 X 2-way union vacuum connector with 1 clapet valve (cod. 67.092/C)
- 5 X Dust collection bags (cod. 130.1108)



S145 Vacuum System 1 Sander Kit

- 1 X S145EPL Portable professional dust extraction system
- 1 X Skorpio III central vacuum pneumatic palm sander
- 1 X Tool holder/handle attachment (cod. 049.1108/C)
- 1 X Antistatic coaxial hose for pneumatic tools
- 1 X 2-way union vacuum connector with 1 clapet valve
- 5 X Dust collection bags (cod. 130.1108)

S145 Vacuum System Standard Kit

- 1 X S145EPL Portable professional dust extraction system
- 1 X Antistatic coaxial hose for pneumatic tools
- 1 X 2-way union vacuum connector with 1 clapet valve
- 5 X Dust collection bags (cod. 130.1108)
- Sanders sold separetely



| Code | Hose(s) | Dust Bags | Sander(s) |
|----------------|-----------------------------------|-----------|-----------------------|
| S145EPL/STS | 5m-16.4ft antistatic coaxial | 5 | - |
| S145EPL/STL | 8m-26.25ft antistatic coaxial | 5 | - |
| S145EPL/KS1-3 | 5m-16.4ft antistatic coaxial | 5 | RH353A |
| S145EPL/KS1-6 | 5m-16.4ft antistatic coaxial | 5 | RH356A |
| S145EPL/KS1-9 | 5m-16.4ft antistatic coaxial | 5 | RH359A |
| S145EPL/KL1-3 | 8m-26.25ft antistatic coaxial | 5 | RH353A |
| S145EPL/KL1-6 | 8m-26.25ft antistatic coaxial | 5 | RH356A |
| S145EPL/KL1-9 | 8m-26.25ft antistatic coaxial | 5 | RH359A |
| S145EPL/KS2-33 | (2) 5m-16.4ft antistatic coaxial | 5 | (2) RH353A |
| S145EPL/KS2-66 | (2) 5m-16.4ft antistatic coaxial | 5 | (2) RH356A |
| S145EPL/KS2-99 | (2) 5m-16.4ft antistatic coaxial | 5 | (2) RH359A |
| S145EPL/KS2-36 | (2) 5m-16.4ft antistatic coaxial | 5 | (1) RH353A, (1)RH356A |
| S145EPL/KS2-39 | (2) 5m-16.4ft antistatic coaxial | 5 | (1) RH353A, (1)RH359A |
| S145EPL/KS2-69 | (2) 5m-16.4ft antistatic coaxial | 5 | (1) RH356A, (1)RH359A |
| S145EPL/KL2-33 | (2) 8m-26.25ft antistatic coaxial | 5 | (2) RH353A |
| S145EPL/KL2-66 | (2) 8m-26.25ft antistatic coaxial | 5 | (2) RH356A |
| S145EPL/KL2-99 | (2) 8m-26.25ft antistatic coaxial | 5 | (2) RH359A |
| S145EPL/KL2-36 | (2) 8m-26.25ft antistatic coaxial | 5 | (1) RH353A, (1)RH356A |
| S145EPL/KL2-39 | (2) 8m-26.25ft antistatic coaxial | 5 | (1) RH353A, (1)RH359A |
| S145EPL/KL2-69 | (2) 8m-26.25ft antistatic coaxial | 5 | (1) RH356A, (1)RH359A |

DUST EXTRACTION

VACUUM ACCESSORIES



ANTISTATIC HOSE ASSEMBLY FOR PNEUMATIC TOOL



ANTISTATIC HOSE ASSEMBLY FOR ELECTRIC TOOL



HOSE ASSEMBLY FOR PNEUMATIC TOOL



HOSE ASSEMBLY FOR ELECTRIC TOOL

| Description | Length | Ømm | Tools | Part Number |
|--------------------------|--------------|-----|-----------|--------------|
| Antistatic hose assembly | 5m - 16.4ft | 29 | pneumatic | 9GAT02004/AS |
| Antistatic hose assembly | 5m - 16.4ft | 29 | electric | 9GAT02001/AS |
| Antistatic hose assembly | 8m - 26.25ft | 29 | pneumatic | 9GAT02002/AS |
| Antistatic hose assembly | 8m - 26.25ft | 29 | electric | 9GAT02003/AS |
| Standard hose assembly | 5m - 26.25ft | 29 | pneumatic | 9GAT02004/C |
| Standard hose assembly | 5m - 26.25ft | 29 | electric | 9GAT02001/C |
| Standard hose assembly | 8m - 26.25ft | 29 | pneumatic | 9GAT02002/C |
| Standard hose assembly | 8m - 26.25ft | 29 | electric | 9GAT02003/C |



| Description | Qty/Pkg | Part Code |
|----------------------------|---------|------------|
| Extraction filter | 1 | 036.1108 |
| Fleece filter bag | 5 | 030.1108/5 |
| 2-way vacuum hose union | 1 | 67.092/C |
| Tool holder support handle | 1 | 049.1108/C |

*Additional accessories and parts available from your authorized RUPES distributor.



"HOW CAN A RUPES VACUUM SAVE ME MONEY?"

Aside from the obvious savings related to labor costs for cleaning up the dust generated by sanding processes a cleaner abrasive will perform consistently for up to 30% longer than the same abrasive in a non-vacuum applicaiton! By actively removing the dust from the surface being prepared the abrasive discs do not load as quickly allowing technicians to use a single disc for much longer while still seeing consistent performance. RUPES vacuums also boast class leading performance and lower cost of ownership. Our replacement filters cost a fraction of those used by competitors vacuums which translates to an overall lower cost to operate. .



Car Detailing Academy

Enjoy hands-on training with our industry-leading team of globally recognized trainers. From sanding to polishing, the **RUPES BigFoot Detailing Academy** is a state of the art training center with the equipment and the staff to host a training for any skill level from beginner to advanced professional techniques. Classes are conducted regularly and are a combination of both private and public events hosted directly by **RUPES** or in conjunction with one of our Authorized Distributors.

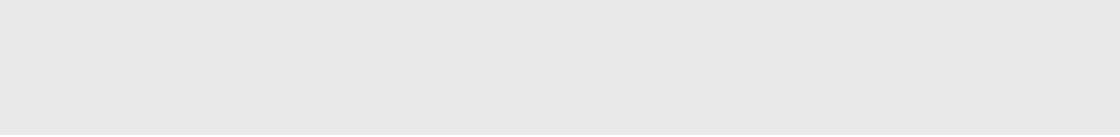
See the upcoming training opportunities and learn more about the **BigFoot Detailing Academy** online at rupesusa.com/bigfoot-academy



EDUCATE *to* DIFFERENTIATE



[illegible]



Handwriting practice lines consisting of 15 horizontal lines. Each line is preceded by a small blue dot, serving as a starting point for letter formation. The lines are evenly spaced and span the width of the page.

[illegible]



SOME HELPFUL LINKS

| | |
|---------------------------|--|
| Find a local distributor: | www.rupesusa.com/distributor-locator |
| Repair Services: | www.rupesusa.com/repairs |
| Replacement Parts: | www.rupesusa.com/parts-support |
| Tech Articles and Videos: | www.rupesusa.com/faq |
| General Contact: | www.rupesusa.com/contact-us |
| Training Information: | www.rupesusa.com/bigfoot-academy |

RUPES S.p.A

Via Marconi 3A
20080 Vermezzo (MI) - Italien

T +39 - 02.94.69.41

F +39 - 02.94.94.10.40

E info_rupes@rupes.it

W www.rupes.com

RUPES USA, Inc.

531 South Taylor Ave
Louisville, CO 80027-3031

T +1- 877-224-5750

E info@rupesusa.com

W www.rupesusa.com

Follow us:

f **in** **You**
@rupesusa



Due to its constant desire to improve its products, RUPES S.p.A. reserves the right to make any technical or design modification to its products without prior notice. The manufacturer shall not be responsible for printing errors. This document voids and replaces previous ones.