

40TH
ANNIVERSARY

WESTiN[®]
AUTOMOTIVE PRODUCTS, INC.

WESTiN[®] **F34** **Wade** **BRUTE** **HDx** **SNYPER**
WESTiN OFFROAD

1 TRUSTED SOURCE SINCE 1977

PRODUCT CATALOG



STACK UP! THE DEGREE OF BRIGHTNESS IS UP TO YOU



BEAM PATTERNS:

FLOOD

SPOT

COMBO

FLEX

CF2

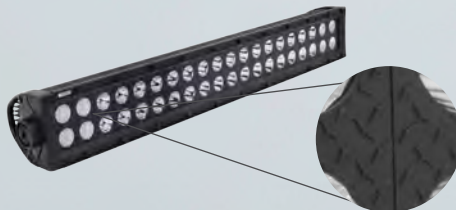
LOW PROFILE DOUBLE ROW
POWER OUTPUT: 36 – 280 WATTS



- Available in 6", 12", 20", 30", 40" and 50" lengths
- 3W Epistar LED chips
- Dust and moisture resistant lens
- Raw Lumens: 2,150 – 19,200
- Includes mounting hardware and pigtail connector
- Limited lifetime warranty
- Available in Combo or Spot beam

NEW B-FORCE

BLACK FACE WITH DIAMOND PLATE PATTERN
DOUBLE ROW / POWER OUTPUT: 12 – 300 WATTS



- Available in 2", 4", 6", 10", 12, 20", 30", 40" and 50" lengths
- 3W Cree LED chips
- 6063 extruded aluminum housing with die-cast ends
- Dust and moisture resistant lens
- Raw Lumens: 1,080 – 27,000
- Includes mounting hardware and pigtail connector
- Limited lifetime warranty
- Available in Flood and Combo beam

PERFORMANCE 2X

LOW PROFILE DOUBLE ROW
POWER OUTPUT: 12 – 300 WATTS



- Available in 2", 4", 6", 10", 20", 30", 40" and 50" lengths
- 3W Osram LED chips
- 6063 extruded aluminum housing with die-cast ends
- Dust and moisture resistant lens
- GORE® pressure equalizing vent
- Raw Lumens: 1,500 – 23,000
- Includes wiring harness with connector, switch, relay and in-line fuse and mounting hardware
- Limited lifetime warranty
- Available in Flood or Flex beam

NEW B-FORCE

BLACK FACE WITH DIAMOND PLATE PATTERN
SINGLE ROW / POWER OUTPUT: 30 – 250 WATTS



- Available in 6", 10", 20", 30", 40" and 50" lengths
- 5W Cree LED chips
- 6063 extruded aluminum housing with die-cast ends
- Dust and moisture resistant lens
- GORE® pressure equalizing vent
- Raw Lumens: 2,980 – 24,900
- Includes mounting hardware and pigtail connector
- Limited lifetime warranty
- Available in Flood and Combo beam

XTREME

LOW PROFILE SINGLE ROW
POWER OUTPUT: 30 – 250 WATTS



- Available in 6", 10", 20", 30", 40" and 50" lengths
- 5W Cree LED chips
- 6063 extruded aluminum housing with die-cast ends
- Dust and moisture resistant lens
- GORE® pressure equalizing vent
- Raw Lumens: 3,000 – 21,500
- Includes wiring harness with connector, switch, relay and in-line fuse and mounting hardware
- Limited lifetime warranty
- Available in Flood or Flex beam

FUSION5

SINGLE ROW
POWER OUTPUT: 15 WATTS



**PAIR PACK
AVAILABLE**

- Dimensions: 5.5" x 1.8"
- 3W Epistar LED chips
- Dust and moisture resistant lens
- Compact light ideal for ATVs
- Raw Lumens: 1,850
- Pivoting base mount bracket
- Includes mounting hardware and pigtail connector
- Limited lifetime warranty
- Available in Flex beam

RAZOR

SINGLE ROW
POWER OUTPUT: 60 WATTS



- Dimensions: 12.2" x 1.8"
- 10W Cree LED chips
- Dust and moisture resistant lens
- HD die-cast aluminum housing with vertical heat sink fins
- Raw Lumens: 7,500
- Includes mounting hardware and pigtail connector
- Limited lifetime warranty
- Available in Flex beam

LED ACCESSORIES

PERFORMANCE 2X DOUBLE ROW LIGHT COVERS



LED WIRING HARNESS



LED BAR BRACKETS



CONTOUR 3.5" BULL BAR
30" LED LIGHT BAR BRACKETS / 32-20045

LED AUXILIARY LIGHTS

GO - PLAY - ANYWHERE
TOGETHER
LED PAIR PACKS
HYPER Q / FM4Q / FM6 / AXIS / QUADRANT

FM4Q LED FLUSH MOUNT
PART NO. 09-1218FM4

Shown on Snyder Marksman Front Bumper
Part No. 59-9525-12JKB5



ULTRA

LED AUXILIARY LIGHT
POWER OUTPUT: 80 WATTS



- Dimensions: 6.5" Round
- 10W Cree LED chips
- Dust and moisture resistant lens
- Raw Lumens: 7,200
- Die-cast aluminum housing
- Pivoting base mount bracket
- Includes mounting hardware and pigtail connector
- Limited lifetime warranty
- Available in Flood or Spot beam

STRIKER

LARGE OPTIC LED AUXILIARY LIGHT
POWER OUTPUT: 25 WATTS



- Dimensions: 3.4" Round
- 25W Cree LED chips
- Dust and moisture resistant lens
- Raw Lumens: 2,120
- Die-cast aluminum housing
- Pivoting base mount brackets
- Includes mounting hardware and pigtail connector
- Limited lifetime warranty
- Available in Flood or Spot beam

AXIS

LED AUXILIARY LIGHTS
POWER OUTPUT: 27 WATTS



- Dimensions: Round (4.7") and Square (4.6")
- 3W Osram LED chips
- Dust and moisture resistant lens
- Raw Lumens: 2,025
- Die-cast aluminum housing
- Pivoting base mount brackets
- Includes mounting hardware and pigtail connector
- Limited lifetime warranty
- Available in Flood or Spot beam

RANGER

LED AUXILIARY LIGHTS
POWER OUTPUT: 10 - 20 WATTS



- Available in 3 styles: (Round) 2.6" x 3.1", (Oval) 4.8" x 3.5" and (Rectangular) 4.2" x 2.4"
- 10W Cree LED chips
- Dust and moisture resistant lens
- Raw Lumens: 900 - 1,800
- Die-cast aluminum housing
- Pivoting base mount brackets
- Includes mounting hardware and pigtail connector
- Limited lifetime warranty
- Available in Flood or Spot beam

**PAIR PACK
AVAILABLE**

NEW HYPERQ

B-FORCE LED AUXILIARY LIGHTS
POWER OUTPUT: 20 WATTS



- Dimensions: 3.2" x 3.4"
- Black diamond tread faceplates
- Black plated stainless hardware
- 5W Cree LED chips
- Dust and moisture resistant lens
- Raw Lumens: 1,080
- Set of 2
- Pivoting base mount bracket
- Includes mounting hardware and pigtail connectors
- Limited lifetime warranty
- Available in Spot beam

**AVAILABLE IN
PAIR PACK ONLY**

HYPERQ

COMPACT LED AUXILIARY LIGHTS
POWER OUTPUT: 20 WATTS



- Dimensions: 3.2" x 3.4"
- 5W Cree LED chips
- Dust and moisture resistant lens
- Raw Lumens: 1,080
- Set of 2
- Pivoting base mount bracket
- Includes mounting hardware and pigtail connectors
- Limited lifetime warranty
- Available in Spot beam

**AVAILABLE IN
PAIR PACK ONLY**



FM4Q

LED FLUSH MOUNT
POWER OUTPUT: 12 WATTS



- Dimensions: 4.8" x 3.6"
- 3W Osram LED chips
- Die-cast aluminum housing
- Dust and moisture resistant lens
- Raw Lumens: 1,080
- Set of 2
- Includes mounting hardware and pigtail connectors
- Limited lifetime warranty
- Available in Flood beam

**AVAILABLE IN
PAIR PACK ONLY**



FM6

LED FLUSH MOUNT
POWER OUTPUT: 18 WATTS



- Dimensions: 7.7" x 2.4"
- 3W Bridgelux LED chips
- Die-cast aluminum housing
- Dust and moisture resistant lens
- Raw Lumens: 1,320
- Set of 2
- Includes mounting hardware and pigtail connectors
- Limited lifetime warranty
- Available in Flood beam

**AVAILABLE IN
PAIR PACK ONLY**



ODYSSEY

LED AUXILIARY LIGHT
POWER OUTPUT: 35 WATTS



- Dimensions: 4.4" x 4.2"
- 5W Osram LED chips
- Dust and moisture resistant lens
- Raw Lumens: 3,485
- Die-cast aluminum housing
- Pivoting base mount bracket
- Includes mounting hardware and pigtail connector
- Limited lifetime warranty
- Available in Flood or Spot beam

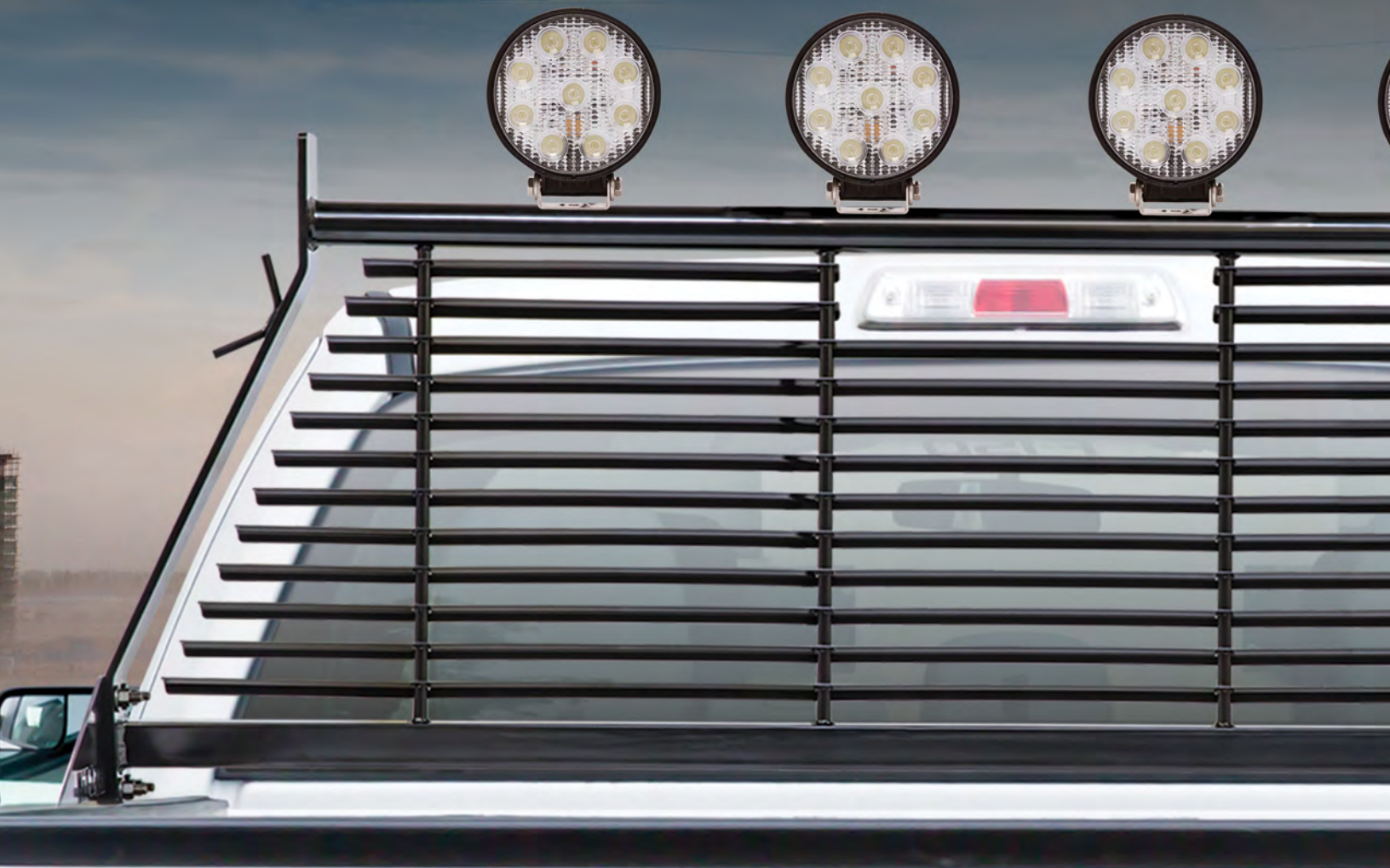
QUADRANT

COMPACT LED AUXILIARY LIGHT
POWER OUTPUT: 20 WATTS



- Dimensions: 3.0" x 2.6"
- 5W Cree LED chips
- Dust and moisture resistant lens
- Raw Lumens: 1,820
- Die-cast aluminum housing
- Pivoting base mount bracket
- Includes mounting hardware and pigtail connector
- Limited lifetime warranty
- Available in Flood or Spot beam

**PAIR PACK
AVAILABLE**



SWIVEL LED

WORK UTILITY LIGHT
POWER OUTPUT: 40 WATTS



- Dimensions: 5.7" x 4.7"
- 5W Osram LED Chips
- Strong Magnetic base
- Light swivels and pivots for quick repositioning
- Dust and moisture resistant lens
- Raw Lumens: 3,984
- Includes mounting hardware
- Includes 12v vehicle connector
- Limited lifetime warranty
- Available in Flood beam

HD ROUND LED

WORK UTILITY LIGHT
POWER OUTPUT: 27 WATTS



- Dimensions: 4.7" Round
- 3W Epistar LED Chips
- Durable ABS housing
- Dust and moisture resistant lens
- Raw Lumens: 1,450
- Pivoting base mount bracket
- Includes mounting hardware and pigtail connector
- Limited lifetime warranty
- Available in Flood beam

HD SQUARE LED

WORK UTILITY LIGHT
POWER OUTPUT: 27 WATTS



- Dimensions: 4.4" x 4.7"
- 3W Epistar LED Chips
- Durable ABS housing
- Dust and moisture resistant lens
- Raw Lumens: 1,450
- Pivoting base mount bracket
- Includes mounting hardware and pigtail connector
- Limited lifetime warranty
- Available in Flood beam

COOL RUNNING EFFICIENT WORK LIGHTS



**HD ROUND LED WORK LIGHTS
PART NO. 09-12014B**

*Shown on HD Headache Rack
Part No. 57-8025*

ROUND LED

**WORK UTILITY LIGHTS
POWER OUTPUT: 18 - 27 WATTS**



- Dimensions: 4.6" Round (6-LED configuration)
- Dimensions: 4.9" Round (9-LED configuration)
- 3W Epistar LED Chips
- Dust and moisture resistant lens
- Raw Lumens: 950 - 1,450
- Pivoting base mount bracket
- Includes mounting hardware and pigtail connector
- Limited lifetime warranty
- Available in Flood or Spot beam

SQUARE LED

**WORK UTILITY LIGHTS
POWER OUTPUT: 15 - 27 WATTS**



- Dimensions: 4.3" x 5.0" (5-LED configuration)
- Dimensions: 4.6" x 5.3" (9-LED configuration)
- 3W Epistar LED Chips
- Dust and moisture resistant lens
- Raw Lumens: 800 - 1,450
- Pivoting base mount bracket
- Includes mounting hardware and pigtail connector
- Limited lifetime warranty
- Available in Flood or Spot beam

MORE STYLES MORE APPLICATIONS THAN ANY OTHER MANUFACTURER!

HDX DROP NERF STEP BARS

TEXTURED BLACK POWDER COAT

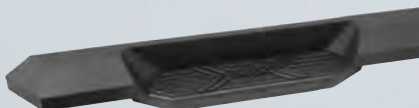


- Mount kit included
- Die stamped steel step areas for maximum traction
- Removable step plate for easy cleaning
- Solid 1-piece construction
- Fits tight to rocker panel for a better fit and rugged look
- Chiseled style complements HDX Bumpers
- U.S. Patent No. 8,864,158
- Textured black powder coat finish

FINISH: Textured Black
MATERIAL: Steel
WARRANTY: 3 Year

HDX XTREME NERF STEP BARS

TEXTURED BLACK POWDER COAT



- Mount kit included
- Oversized step areas for easier cab entry and exit
- Injection molded polymer step pad
- Solid 1-piece construction
- Chiseled style complements HDX Bumpers
- U.S. Patent No. 8,864,158
- Textured black powder coat finish

FINISH: Textured Black
MATERIAL: Steel
WARRANTY: 3 Year

GENX OVAL NERF STEP BARS

304 STAINLESS STEEL / BLACK POWDER COAT



- Mount kit included
- 4" upper oval tube
- Drop step is made of 2" oval tube
- Fits tight to rocker panel
- Textured step pad
- Welded and sealed tube ends
- U.S. Patent No. 6588793, 6874801

FINISH: Polished
MATERIAL: 304 Stainless Steel
WARRANTY: Lifetime

FINISH: Black Powder Coat
MATERIAL: E-Coated Steel
WARRANTY: 3 Year

NERF STEP BARS



HDX DROP NERF STEP BARS
PART NO. 56-13945

HDX DROP NERF STEP BARS

2016 SEMA Best New Exterior
Accessory Product of the Year!

PRO TRAXX[®] 4

304 STAINLESS STEEL / BLACK POWDER COAT



- Mount kit included
- 4" oval tube
- 30° OE style bends
- Fully welded domed ends
- Injection molded polymer step pad
- 4" wide step area with Westin logo
- Bolt-on installation – no drilling required*

**On most applications*

FINISH: Polished

MATERIAL: 304 Stainless Steel

WARRANTY: Lifetime

FINISH: Black Powder Coat

MATERIAL: E-Coated Steel

WARRANTY: 3 Year

PRO TRAXX[®] 5

304 STAINLESS STEEL / BLACK POWDER COAT



- Mount kit included
- 5" oval tube
- 30° OE style bends at each end of the tube
- Fully welded domed ends
- Injection molded polymer step pad
- 5" wide step area with Westin logo
- Bolt-on installation – no drilling required*

**On most applications*

FINISH: Polished

MATERIAL: 304 Stainless Steel

WARRANTY: Lifetime

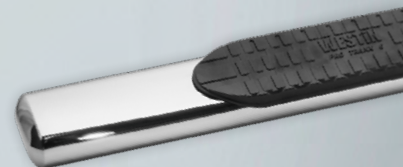
FINISH: Black Powder Coat

MATERIAL: E-Coated Steel

WARRANTY: 3 Year

PRO TRAXX[®] 6

304 STAINLESS STEEL / BLACK POWDER COAT



- Mount kit included
- 6" oval tube
- Straight tube design
- Fully welded domed ends
- Injection molded polymer step pad
- Bolt-on installation – no drilling required*

**On most applications*

FINISH: Polished

MATERIAL: 304 Stainless Steel

WARRANTY: Lifetime

FINISH: Black Powder Coat

MATERIAL: E-Coated Steel

WARRANTY: 3 Year

NERF STEP BARS

STEP IN! WE MAKE IT EASY

PREMIER 6 OVAL NERF STEP BARS

PART NO. 22-6040

Bracket Kit Part No. 22-0015

PLATINUM 4 OVAL NERF STEP BARS

304 STAINLESS STEEL / BLACK POWDER COAT



- Mount kit included
- OE style oval tube steps
- 90° mandrel bends**
- Injection molded polymer step pad
- Recessed step area
- Bolt-on installation – no drilling required*

*On most applications

FINISH: Polished

MATERIAL: 304 Stainless Steel

WARRANTY: Lifetime

FINISH: Black Powder Coat

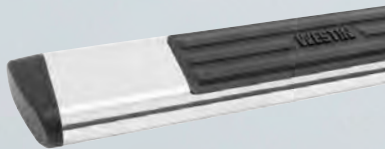
MATERIAL: E-Coated Steel

WARRANTY: 3 Year

**Some applications may feature ends with 30° bends

PREMIER 6 OVAL NERF STEP BARS

304 STAINLESS STEEL / BLACK POWDER COAT



- Mount kit sold separately
- Extra wide 6" oval side step tubes
- Injection molded polymer step pad
- Molded end caps give the steps a finished OE look
- Solid construction
- Vehicle specific mounting kit is sold separately
- Bolt-on installation – no drilling required*

*On most applications

FINISH: Polished

MATERIAL: 304 Stainless Steel

WARRANTY: Lifetime

FINISH: Black Powder Coat

MATERIAL: E-Coated Steel

WARRANTY: 3 Year

PREMIER 4 OVAL NERF STEP BARS

304 STAINLESS STEEL / BLACK POWDER COAT



- Mount kit sold separately
- 4" oval tube
- Cradle mounted tubes
- Injection molded polymer step pad
- Molded oval end caps
- Bolt-on installation – no drilling required*

*On most applications

FINISH: Polished

MATERIAL: 304 Stainless Steel

WARRANTY: Lifetime

FINISH: Black Powder Coat

MATERIAL: E-Coated Steel

WARRANTY: 3 Year



PLATINUM 4 OVAL WTW

304 STAINLESS STEEL / BLACK POWDER COAT



- Mount kit included
- Wheel-to-Wheel (WTW) length step bars
- Third step for easy truck bed access
- 4" oval tube
- Front mount features a 90° bend
- 30° bend at far end
- Isolator bracket included
- Bolt-on installation – no drilling required*

*On most applications

FINISH: Polished

MATERIAL: 304 Stainless Steel

WARRANTY: Lifetime

FINISH: Black Powder Coat

MATERIAL: E-Coated Steel

WARRANTY: 3 Year

PRO TRAX[®] 5 OVAL WTW

304 STAINLESS STEEL / BLACK POWDER COAT



- Mount kit included
- Wheel-to-Wheel (WTW) length step bars
- 5" oval tube
- Third step for easy truck bed access
- 30° OE style bends at each end of the tube
- Fully welded domed ends
- Injection molded polymer step pad
- Bolt-on installation – no drilling required*

*On most applications

FINISH: Polished

MATERIAL: 304 Stainless Steel

WARRANTY: Lifetime

FINISH: Black Powder Coat

MATERIAL: E-Coated Steel

WARRANTY: 3 Year

NERF STEP BARS



SIGNATURE 3 NERF STEP BARS
PART NO. 25-3815

E-SERIES 3 NERF STEP BARS

STAINLESS STEEL / BLACK POWDER COAT

- Mount kit included
- 3" round step bars
- Vehicle specific applications
- Injection molded polymer step pad
- Recessed step area
- Bolt-on installation – no drilling required*

**On most applications*

FINISH: Polished

MATERIAL: Stainless Steel

WARRANTY: Lifetime

FINISH: Black Powder Coat

MATERIAL: E-Coated Steel

WARRANTY: 3 Year



SIGNATURE OF QUALITY

SIGNATURE 3 NERF STEP BARS

CHROME PLATED STEEL / BLACK POWDER COAT



- Mount kit included
- 3" round step bars
- Made from corrosion resistant coated steel
- Superior mounting design
- Recessed step area
- Injection molded polymer step pad
- Heavy wall tube
- Bolt-on installation – no drilling required*

*On most applications

FINISH: Chrome
MATERIAL: Steel
WARRANTY: 3 Year

FINISH: Black Powder Coat
MATERIAL: Galvanized Steel
WARRANTY: 5 Year

PLATINUM 3 NERF STEP BARS

CHROME PLATED STAINLESS STEEL



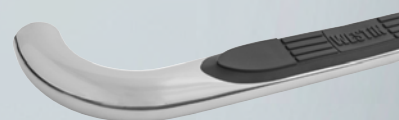
- Mount kit included
- 3" round chrome plated stainless steel steps
- Vehicle specific applications
- Heavy wall tube
- Injection molded polymer step pad
- Recessed step area
- Bolt-on installation – no drilling required*

*On most applications

FINISH: Chrome
MATERIAL: 304 Stainless Steel
WARRANTY: Lifetime

E-SERIES 3 NERF STEP BARS – SS

304 STAINLESS STEEL W/ STAINLESS BRACKETS



- Mount kit included
- Stainless steel brackets
- Zinc coated hardware
- Polished stainless 3" round step bars
- Recessed step area
- Maximum rust protection
- Bolt-on installation – no drilling required*

*On most applications

FINISH: Polished
MATERIAL: 304 Stainless Steel
WARRANTY: Lifetime

FUNCTION IS A MUST. STYLE IS A CHOICE

NEW R5 NERF STEP BARS

304 STAINLESS STEEL / BLACK ALUMINUM



BRACKET COVER



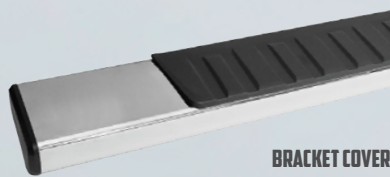
- Mount kit included
- Injection molded polymer step pad
- 5" wide step area
- Includes injection molded bracket covers

FINISH: Polished
MATERIAL: 304 Stainless Steel
WARRANTY: Lifetime

FINISH: Textured Black
MATERIAL: Aluminum
WARRANTY: 3 Year

R7 NERF STEP BARS

304 STAINLESS STEEL / BLACK ALUMINUM



BRACKET COVER



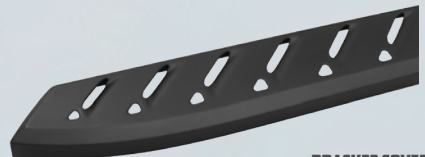
- Mount kit included
- OE style
- Injection molded polymer step pad
- Recessed board design conceals brackets
- Includes injection molded bracket covers

FINISH: Polished
MATERIAL: 304 Stainless Steel
WARRANTY: Lifetime

FINISH: Black Powder Coat
MATERIAL: Aluminum
WARRANTY: 3 Year

THRASHER RUNNING BOARDS

TEXTURED BLACK POWDER COAT



BRACKET COVER



- Mount kit included
- Aggressive chiseled appeal
- 1-piece stamped steel construction
- Indented louvers
- Includes injection molded bracket covers

FINISH: Textured Black
MATERIAL: Steel
WARRANTY: 3 Year



**THRASHER RUNNING BOARDS
PART NO. 28-81025**

SURE-GRIP AND MOLDED RUNNING BOARDS

EXTRUDED RUBBER STEP AND ALUMINUM BASE BOARD



- Mount kit sold separately

FINISH: Brite, Brushed and Black
MATERIAL: Extruded Rubber Step and Aluminum Base Board
WARRANTY: 5 Year



Light Kit / Part No. 27-6000
Sold Separately

MOLDED POLYMER STEP AND ALUMINUM BASE BOARD



- Mount kit sold separately

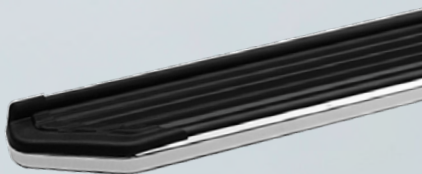
FINISH: Black
MATERIAL: Injection Molded Top and Aluminum Base Board
WARRANTY: 5 Year



Also available
in lighted

STYLIZED RUNNING BOARDS

304 STAINLESS STEEL / BLACK POWDER COAT



- Mount kit included
- 5" wide rubberized step surface
- Stylized molded trim piece at both ends
- Includes gap strip
- Cradle mounted boards
- 304 stainless steel trim with polished finish or mild steel trim with black powder coat finish
- Bolt-on installation – no drilling required*

*On most applications

FINISH: Polished
MATERIAL: Aluminum Base Board
WARRANTY: Lifetime

FINISH: Black Powder Coat
MATERIAL: Aluminum Base Board
WARRANTY: 5 Year

HD RUNNING BOARDS

TEXTURED BLACK / SILVER POWDER COAT



- Mount kit included
- 14 gauge diamond tread
- Heavy duty welded steel construction
- Step surface includes 1" splash guard made of a continuous single sheet of metal
- Optional boot scraper included
- Silver finish available for vans only
- Made in the USA

FINISH: Textured Black
MATERIAL: Steel
WARRANTY: 3 Year

FINISH: Silver Powder Coat
MATERIAL: Steel
WARRANTY: 3 Year

BULL BARS AND LIGHT BARS

NEW ULTIMATE LED BULL BAR

LED LIGHT BAR INCLUDED

- » Mount kit included
- » Made of 3" tube
- » Molded bushings for a finished look
- » Includes 20" combo beam LED light bar
- » Wiring harness included
- » Clean-cut opening with weather strip seal
- » Removable brushed stainless steel skid plate features Westin logo
- » Bolt-on installation – no-drilling required

* Minor cutting of fascia may be required

LED LIGHT BAR INCLUDED

- » 3 Watt Osram LED chips
- » Power Output: 45 Watts
- » Raw Lumens: 4,050

FINISH: Chrome

MATERIAL: 304 Stainless Steel

WARRANTY: Lifetime

LED WARRANTY: Limited Lifetime

FINISH: Textured Black

MATERIAL: Galvanized Steel

WARRANTY: Lifetime

LED WARRANTY: Limited Lifetime



20" COMBO BEAM LED LIGHT BAR



3W OSRAM LED CHIP

CONTOUR 3.5" BULL BAR

304 STAINLESS STEEL / BLACK AND BLACK TEXTURED



- Mount kit included
- Contoured to vehicle front end
- Made of 3.5" tube
- 30" LED light mounting brackets (Part No. 32-20045)
- 30" curved LED light mounting brackets (Part No. 32-20055)
- Multi-faceted molded bushings with exposed S/S fasteners
- 4 mounting points on top of center bar

FINISH: Polished

MATERIAL: 304 Stainless Steel

WARRANTY: Lifetime

FINISH: Black or Textured Black

MATERIAL: Galvanized Steel

WARRANTY: 3 Year



LED BAR MOUNTING BRACKETS
SOLD SEPARATELY

E-SERIES BULL BAR

304 STAINLESS STEEL / BLACK POWDER COAT



- Mount kit included
- 3" tubing
- Brushed skid plate design
- Fully welded cross tube
- 2 light mounting points on the top of center bar
- 20" LED light mounting brackets (Part No. 32-0045)
- License plate re-locator sold separately (Part No. 32-0055)

FINISH: Polished

MATERIAL: 304 Stainless Steel

WARRANTY: Lifetime

FINISH: Black Powder Coat

MATERIAL: Steel

WARRANTY: 3 Year



LICENSE PLATE RE-LOCATOR

ULTIMATE BULL BAR

304 STAINLESS STEEL / BLACK POWDER COAT



- Mount kit included
- 2.5" for compact trucks and SUVs
- 3" tube for full-sized trucks and SUVs
- 20" LED light mounting brackets (Part No. 32-0045)
- Molded transition bushings
- 2 mounting points on the top of center bar

FINISH: Chrome

MATERIAL: 304 Stainless Steel

WARRANTY: Lifetime

FINISH: Black Powder Coat

MATERIAL: Galvanized Steel

WARRANTY: 5 Year



20" LED LIGHT
BRACKETS FOR 3" TUBE
APPLICATIONS ONLY



ULTIMATE LED BULL BAR PART NO. 32-3885L

Shown with Ultimate LED Single Row
Part No. 09-32020C

CONTOUR SAFARI BAR

304 STAINLESS STEEL / BLACK POWDER COAT



- Mount kit included
- 2.0" or 2.5" tube (varies by application)
- Continuous compound bends
- HD Bar Clamp 2.0" (Part No. 32-20005)
- HD Bar Clamp 2.5" (Part No. 32-20015)
- Optional black light tabs included

FINISH: Polished
MATERIAL: 304 Stainless Steel
WARRANTY: Lifetime

FINISH: Black Powder Coat
MATERIAL: E-Coated Steel
WARRANTY: 3 Year



HD BAR CLAMPS
SOLD SEPARATELY

SAFARI LIGHT BAR

304 STAINLESS STEEL / BLACK POWDER COAT



- Mount kit sold separately
- Curved contour bends
- 2" tube
- Universal bars
- Welded light mounting tabs

FINISH: Polished
MATERIAL: 304 Stainless Steel
WARRANTY: Lifetime

FINISH: Black Powder Coat
MATERIAL: Steel
WARRANTY: 5 Year

OFF-ROAD LIGHT BAR

304 STAINLESS STEEL / BLACK POWDER COAT



- Mount kit included
- For post mount LED lights
- Constructed from 2 in. steel tubing
- Accommodates lights up to 8" in diameter
- Welded light mounting points
- Vehicle specific applications
- U.S. Patent No. D521,923

FINISH: Polished
MATERIAL: 304 Stainless Steel
WARRANTY: Lifetime

FINISH: Black Powder Coat
MATERIAL: Steel
WARRANTY: 3 Year



6" OFF-ROAD LIGHTS
AVAILABLE

HEAVY DUTY TRUCKS NEED HEAVY DUTY GEAR



HDX WINCH MOUNT GRILLE GUARD PART NO. 57-93685

Shown with HDX B-FORCE Flush Mount LED Kit
10" LED Lights (Set of 2) w/ Wiring Harness
Part No. 57-0035

SPORTSMAN GRILLE GUARD

304 STAINLESS STEEL / BLACK POWDER COAT



- 1-piece solid construction
- Uprights capped 1.5" rubber strips
- Single or double hood bar (varies by application)
- Removable wire light guards
- Mounts up to 4 auxiliary lights across center channel

FINISH: Polished
MATERIAL: 304 Stainless Steel
WARRANTY: Lifetime

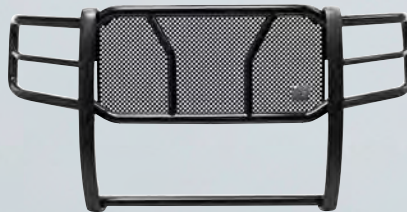
FINISH: Black Powder Coat
MATERIAL: Steel
WARRANTY: 5 Year



MAX® TOW HOOK
PART NO. 46-3005

HDX GRILLE GUARD

304 STAINLESS STEEL / BLACK POWDER COAT



- 2" tube, full wraparound wings
- Full punch plate grille
- 1-piece solid construction
- Uprights capped with 2.75" wide rubber strips

FINISH: Polished
MATERIAL: 304 Stainless Steel
WARRANTY: Lifetime

FINISH: Black Powder Coat
MATERIAL: E-Coated Steel
WARRANTY: 3 Year



HDX LIGHT CLAMPS
AVAILABLE IN BLACK
OR POLISHED

NEW HDX B-FORCE FLUSH MOUNT LED KIT

SET OF 2 — AVAILABLE IN 6" AND 10" LENGTHS



- Installs onto Westin HDX Grille Guard punch plate
- **Kit Includes:**
 - (2) B-FORCE Double Row LED Light Bars
 - (2) Flush mount faceplates
 - (2) Adjustable slider brackets
 - (1) Dual connecting wiring harness and mounting hardware
- **Choose mounting method:**
 - Direct bolt-on
 - Cut-out punch plate installation



KIT INCLUDES



SPORTSMAN WINCH MOUNT

304 STAINLESS STEEL / BLACK POWDER COAT



- HD Tray brackets mount directly to vehicle frame
- Winch trays tested to a minimum straight line pull of 16,500 lbs.
- Fits most medium frame 8,000-12,000 lbs. winches (up to 10.25" tall)

FINISH: Polished
MATERIAL: 304 Stainless Steel
WARRANTY: Lifetime

FINISH: Black Powder Coat
MATERIAL: Steel
WARRANTY: 3 Year



FACEPLATE
SOLD SEPARATELY

HDX WINCH MOUNT

304 STAINLESS STEEL / BLACK POWDER COAT



- HD Tray brackets mount directly to vehicle frame
- Winch trays tested to a minimum straight line pull of 16,500 lbs.
- Fits most medium frame 8,000-12,000 lbs. winches (up to 10.25" tall)

FINISH: Polished
MATERIAL: 304 Stainless Steel
WARRANTY: Lifetime

FINISH: Black Powder Coat
MATERIAL: E-Coated Steel
WARRANTY: 3 Year

LICENSE PLATE RE-LOCATOR

OPTIONAL ACCESSORY

- Mounts directly to winch tray or HDX Front Bumper
- Hinged "flip-up" system
- Clasp closure holds license plate in place



FINISH: Black Powder Coat **PART NO.** 46-20055
MATERIAL: Steel
WARRANTY: 3 Year

SENSOR RE-LOCATOR

HARDWARE INCLUDED

- Re-locates OE parking sensors
- Set of 2
- 20 gauge pigtail and connectors included
- Mount directly to grille guard uprights*
- Patent pending



FINISH: Polished
MATERIAL: 304 Stainless Steel
WARRANTY: Lifetime

FINISH: Black Powder Coat
MATERIAL: E-Coated Steel
WARRANTY: 3 Year
*Drilling required

WESTIN[®] HDX

HEAVY DUTY

XTREME

TRUCK GEAR

HDX FRONT BUMPER

MOUNTING BRACKETS INCLUDED

- Made of 7 gauge steel
- 1-piece fully welded construction
- Aggressive chiseled design
- Fits most medium frame 8,000-12,000 lbs winches (up to 10.25" tall)
- Fits remote solenoid winches only*
- Pre-drilled for winch and fairlead mounting
- Laser-cut openings to allow engine cooling
- Built to receive (2) 10" LED light bars
- Optional Light Bar and Pre-Runner Bar sold separately
- 1" thick HD shackle mounts
- Application specific designs
- Available in textured black or raw finish

FINISH: Textured Black
MATERIAL: Steel

WARRANTY
FINISH: 1 Year
MATERIAL: Limited Lifetime

*Will not fit integrated winches



OPTIONAL LIGHT BAR SOLD SEPARATELY



OPTIONAL PRE-RUNNER BAR SOLD SEPARATELY

AVAILABLE ACCESSORIES:



XTREME
20" SINGLE ROW LED LIGHT BAR



PERFORMANCE2X OR STEALTH
10" DOUBLE ROW LED LIGHT BAR



HDX FRONT BUMPER PART NO. 58-141515

Shown with (2) 10" Performance2X Light Bars
Part No. 09-12280-20S

HDX Bumper LED Light Bar
Part No. 58-95-0035

HDX REAR BUMPER

W/ 2 LED FLUSH MOUNT LIGHTS INCLUDED

- Made of 7 gauge steel
- 1-piece fully welded construction
- 1" thick HD shackle mounts
- License plate illumination lights included
- Laser-cut HDX Logo on ends
- Application specific designs
- Mounting brackets included
- Available with or without provision for back-up sensors for most applications
- Available in textured black or raw finish

FINISH: Textured Black
MATERIAL: Steel

WARRANTY
FINISH: 1 Year
MATERIAL: Limited Lifetime



FM6

LED FLUSH MOUNT
POWER OUTPUT: 18 WATTS

LIGHTS INCLUDED!

OE BUMPER WINCH MOUNTING



MAX[®]
WINCH MOUNTING SYSTEM

MAX WINCH MOUNTING SYSTEM
PART NO. 46-21175

MAX WINCH TRAY

BASE UNIT

- HD brackets mount directly to vehicle frame
- Winch tray tested to a maximum straight line pull of 16,500 lbs.
- Fits most medium frame 8,000-12,000 lbs. winches (up to 10.25" tall)
- Pre-drilled for quick mounting of hawse or roller fairlead
- Optional MAX Bull Bar/Light Bar
- Optional MAX Faceplate
- Optional MAX Tow Hooks (Part No. 46-3005 – 2 needed)

FINISH: Black Powder Coat
MATERIAL: Steel
WARRANTY: 3 Year



AVAILABLE ACCESSORIES:



OFF-ROAD 9.5 WATERPROOF WINCH
PART NO. 47-2100



MAX TOW HOOK
PART NO. 46-3005



HAWSE FAIRLEAD
PART NO. 47-3410



LICENSE PLATE
RE-LOCATOR
PART NO. 46-20055

OFF-ROAD READY! INSTALLERS PREFER WESTIN®

MAX FACEPLATE

OPTIONAL



- Mounts directly to MAX Winch Tray
- Application specific
- Tow hook openings
- 14 gauge polished stainless steel

FINISH: Polished

MATERIAL: 304 Stainless Steel

WARRANTY: Lifetime

MAX BULL BAR/LIGHT BAR

OPTIONAL



- Mounts directly to MAX Winch Tray
- Made of 3" tube
- Mount up to 3 off-road lights for most applications
- Pre-drilled for wire management
- No drilling required

FINISH: Stainless

MATERIAL: 304 Stainless Steel

WARRANTY: Lifetime

FINISH: Black Powder Coat

MATERIAL: Steel

WARRANTY: 3 Year

SNYPER

WESTIN OFFROAD

OWN THE TRAIL



SNYPER MARKSMAN

FULL WIDTH FRONT BUMPER

- 7 gauge steel
- 1-piece fully welded construction
- Aggressive chiseled design
- Fits most medium frame 8,000-12,000 lbs winches (up to 10.25" tall)
- Pre-drilled for winch and fairlead mounting
- Fits most (4) flush mount auxiliary lights
- 1" thick HD shackle mounts
- Brackets mount directly to frame
- Textured black finish

FINISH: Textured Black
MATERIAL: Steel

WARRANTY
FINISH: 1 Year
MATERIAL: Limited Lifetime

*Shown with (4) FM4Q LED Flush Mount Lights – Sold Separately



SNYPER MARKSMAN BULL BAR FRONT BUMPER*



SNYPER MARKSMAN STINGER FRONT BUMPER*

NOTE: LIGHTS NOT INCLUDED



SNYPER SCOPE BULL BAR
PART NO.59-6525-12JB5

SNYPER SCOPE

STUBBY FRONT BUMPER



- 7 gauge steel
- 1-piece fully welded construction
- Fits most medium frame 8,000-12,000 lbs winches (up to 10.25" tall)
- Brackets mount directly to frame
- Available in textured black finish

FINISH: Textured Black
MATERIAL: Steel

WARRANTY
FINISH: 1 Year
MATERIAL: Limited Lifetime

SNYPER SCOPE BULL BAR

STUBBY FRONT BUMPER



- 7 gauge steel
- Welded 2" diameter bull bar
- Fits most medium frame 8,000-12,000 lbs winches (up to 10.25" tall)
- Brackets mount directly to frame
- Available in textured black finish

FINISH: Textured Black
MATERIAL: Steel

WARRANTY
FINISH: 1 Year
MATERIAL: Limited Lifetime

SNYPER SCOPE STINGER

STUBBY FRONT BUMPER



- 7 gauge steel
- Welded 2" tube stinger
- Fits most medium frame 8,000-12,000 lbs winches (up to 10.25" tall)
- Brackets mount directly to frame
- Available in textured black finish

FINISH: Textured Black
MATERIAL: Steel

WARRANTY
FINISH: 1 Year
MATERIAL: Limited Lifetime



SNYPER RECOIL REAR BUMPER W/ TIRE CARRIER
PART NO. 59-5515-22JKS5

SNYPER RECOIL REAR BUMPER

W/ 2 LED FLUSH MOUNT LIGHTS INCLUDED

- 7 gauge steel
- 1-piece fully welded construction
- 1" thick HD shackle mounts
- (2) Flush mount LED lights included
- Welded hitch receiver
- Laser-cut Snyder logo on ends
- Brackets mount directly to frame
- Textured black finish

FINISH: Textured Black
MATERIAL: Steel

WARRANTY
FINISH: 1 Year
MATERIAL: Limited Lifetime



SNYPER RECOIL REAR BUMPER WITH TIRE CARRIER
ALSO AVAILABLE



FM40

LED FLUSH MOUNT
POWER OUTPUT: 12 WATTS
LIGHTS INCLUDED!



AVAILABLE ACCESSORIES:



D-SHACKLE



BALL
MOUNT KITS



SNYPER WESTIN OFFROAD

SNYPER TUBE FENDERS

HARDWARE INCLUDED



FRONT TUBE FENDERS
SOLD IN PAIRS

REAR TUBE FENDERS
SOLD IN PAIRS

- Protect from flying debris
- Provide high clearance for Jeeps with large tires
- Made of 14 gauge steel
- 1.5" diameter .120" thick wall
- Front fender 6 7/16" wide
- Rear fender 4 7/8" wide
- Turn signal lights on front fenders
- Sold in pairs – (2) Front or (2) Rear
- Hardware included

FINISH: Textured Black
MATERIAL: Steel

WARRANTY
FINISH: 1 Year
MATERIAL: Limited Lifetime

NEW SNYPER ROCK SLIDER STEPS

MOUNT KIT INCLUDED



- Protect vehicle's rocker panel
- Snug rocker and body mounting provides maximum clearance*
- Black plated stainless steel hardware
- Fully functional step with minimal protrusion
- Slip resistant texture coated steel step plates
- Easy to clean removable step plate
- Equipped with two high-lift jack points
- Available for 2 door and 4 door applications

FINISH: Textured Black
MATERIAL: Steel

WARRANTY
FINISH: 1 Year
MATERIAL: Limited Lifetime

*Drilling required

SNYPER TRIPLE TUBE ROCK RAIL STEPS

MOUNT KIT INCLUDED



- Protect rocker panels
- Made of 16 gauge steel
- 2" diameter .120" thick wall tube
- Mount directly to vehicle frame
- Coarse texture coated step area for slip resistance
- Welded support plate with laser-cut Sniper logo
- Available for 2 and 4 door
- No drilling required

FINISH: Textured Black
MATERIAL: Steel

WARRANTY
FINISH: 1 Year
MATERIAL: Limited Lifetime

SNYPER
WESTIN OFFROAD

**YOU NEED LED LIGHTS.
HOW YOU MOUNT THEM,
MATTERS**



FOAM GASKETS INCLUDED TO
PROTECT VEHICLE FINISH

SNYPER OVERHEAD LED LIGHT HOOP

- Stainless steel fasteners for superior corrosion protection
- Side mount brackets to install 50" LED Bar
- Pre-drilled for wire management
- Lower pillar light mounting points for single post lights
- Textured black finish complements OEM vehicle trim
- Foam gaskets included to protect vehicle finish
- Bolt-on installation - no drilling required

FINISH: Textured Black
MATERIAL: Steel
WARRANTY: 3 Year

PART NO. 62-41005



FOAM GASKETS INCLUDED TO
PROTECT VEHICLE FINISH

SNYPER PILLAR LED LIGHT MOUNT

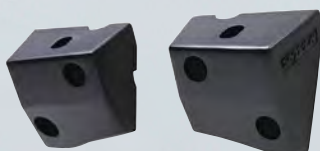
- Made of 7 gauge mild steel to sustain the weight of a 50" Light Bar
- Stainless steel fasteners for superior corrosion protection
- Textured black finish complements OEM vehicle trim
- Foam gaskets included to protect vehicle finish
- Bolt-on installation - no drilling required

FINISH: Textured Black
MATERIAL: Steel
WARRANTY: 3 Year

PART NO. 62-41035



SOLID CAST ALUMINUM MOUNTS



SNYPER LOWER PILLAR LIGHT MOUNTS

SOLD IN SET OF 2

- For post mount LED lights
- Lightweight solid platform made of cast aluminum
- Stainless steel fasteners for superior corrosion protection
- Textured black finish complements OEM vehicle trim
- Cast with wire management channel
- Foam gaskets included to protect vehicle finish
- Bolt-on installation - no drilling required

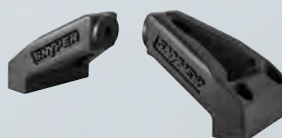
FINISH: Textured Black

MATERIAL: Die-cast Aluminum **PART NO. 62-41045**

WARRANTY: 3 Year



SQUIRTER RE-LOCATOR
BRACKET INCLUDED



SNYPER LED HOOD MOUNT

SOLD IN SET OF 2

- Stainless steel fasteners for superior corrosion protection
- Easily installs directly to existing hood hinge bolt locations
- Low profile design does not obstruct drivers view
- Includes brackets to relocate windshield squirter
- Textured black finish complements OEM vehicle trim
- Foam gaskets included to protect vehicle finish
- Bolt-on installation - no drilling required

FINISH: Textured Black

MATERIAL: Die-cast Aluminum **PART NO. 62-41015**

WARRANTY: 3 Year



SNYPER LED COWL MOUNT

SOLD IN SET OF 2

- Stainless steel fasteners for superior corrosion protection
- Mounts directly to existing cowl bolt locations
- Textured black finish complements OEM vehicle trim
- Foam gaskets included to protect vehicle finish
- Bolt-on installation - no drilling required

Note: Fits single LED Bar only

FINISH: Textured Black

MATERIAL: Die-cast Aluminum **PART NO. 62-41025**

WARRANTY: 3 Year

BOLT-ON STYLING

SNYPER BUMPER MOUNT LIGHT BAR
PART NO. 62-41055



SNYPER BUMPER MOUNT LIGHT BAR

- Textured black finish compliments OEM vehicle trim
- Light tabs mount up to 3 single post lights or (1) 20" Light Bar
- Design does not obstruct headlights
- Bolt-on installation - no drilling required

FINISH: Textured Black

MATERIAL: Steel

WARRANTY: 3 Year

PART NO. 62-41055



SNYPER BUMPER MOUNT 30" LED BAR

SOLD IN SET OF 2

- Design does not obstruct headlights
- Textured black finish compliments OEM vehicle trim
- Bolt-on installation - no drilling required

FINISH: Textured Black

MATERIAL: Steel

WARRANTY: 3 Year

PART NO. 62-41065



TRAILBLAZER FRONT BUMPER

- Made of 2" diameter tube
- HD shackle mount tabs
- Angled light bar with light mounts tabs
- Utilizes Trailblazer Winch Tray Part No. 47-3106
- Contoured bumper provides off-road protection

FINISH: Black Wrinkle
MATERIAL: Steel
WARRANTY: 3 Year



TRAILBLAZER REAR BUMPER

- Made of 2" diameter tube
- Includes 2" hitch receiver
- Designed for spare tire clearance
- Rated to 350 lbs. tongue weight and 3,500 lbs trailer weight

FINISH: Black Wrinkle
MATERIAL: Steel
WARRANTY: 3 Year



TRAILBLAZER ROCKER BARS

- Made of 2" diameter tube
- Available for 2 and 4 door Wranglers

FINISH: Black Wrinkle
MATERIAL: Steel
WARRANTY: 3 Year

WINCHES



NEW

OFF-ROAD 9.5 WATERPROOF WINCH

**CORDED CONTROLLER INCLUDED
STEEL CABLE**



- Rated Line Pull: 9,500 lbs. Single line
- IP67 waterproof rated
- Motor: 6.6hp 12V series wound
- Weight: 89 lbs.
- Finish: Black
- Overall Dimensions: 22"(L) x 6.3"(W) x 8.1"(H)

PART NO. 47-2100

NEW

OFF-ROAD 9.5S WATERPROOF WINCH

**CORDED CONTROLLER INCLUDED
SYNTHETIC ROPE**



- Rated Line Pull: 9,500 lbs. Single line
- IP67 waterproof rated
- Motor: 6.6hp 12V series wound
- Weight: 66 lbs.
- Finish: Black
- Overall Dimensions: 22"(L) x 6.3"(W) x 8.1"(H)

PART NO. 47-2103

NEW

OFF-ROAD 12.5 WATERPROOF WINCH

**CORDED CONTROLLER INCLUDED
STEEL CABLE**



- Rated Line Pull: 12,500 lbs. Single line
- IP67 waterproof rated
- Motor: 6.6hp 12V series wound
- Weight: 88 lbs.
- Finish: Black
- Overall Dimensions: 22"(L) x 6.3"(W) x 8.1"(H)

PART NO. 47-2106

NEW

DURABLE AND CAPABLE WINCHES

MECHANICAL COMPONENTS WARRANTY: 3 YEAR
ELECTRICAL PARTS WARRANTY: 12 MONTH

NEW

OFF-ROAD 12.5S WATERPROOF WINCH

**CORDED CONTROLLER INCLUDED
SYNTHETIC ROPE**



- Rated Line Pull: 12,500 lbs. Single line
- IP67 waterproof rated
- Motor: 6.6hp 12V series wound
- Weight: 66 lbs.
- Finish: Black
- Overall Dimensions: 22"(L) x 6.3"(W) x 8.1"(H)

PART NO. 47-2109

NEW

OFF-ROAD 10.0S INTEGRATED WINCH

**REMOTE CONTROLLER INCLUDED
SYNTHETIC ROPE**



- Rated Line Pull: 10,000 lbs. Single line
- Sealed motor casing
- Motor: 6.6hp 12V series wound
- Weight: 101 lbs.
- Finish: Black
- Overall Dimensions: 21.1"(L) x 6.3"(W) x 10.0"(H)

PART NO. 47-2200

NEW

OFF-ROAD 12.0 INTEGRATED WINCH

**REMOTE CONTROLLER INCLUDED
STEEL CABLE**



- Rated Line Pull: 12,000 lbs. Single line
- Sealed motor casing
- Motor: 6.6hp 12V series wound
- Weight: 101 lbs.
- Finish: Black
- Overall Dimensions: 21.3"(L) x 6.3"(W) x 10.0"(H)

PART NO. 47-2203

WINCHES

ATV WINCHES

WINCH ACCESSORIES & REPLACEMENT PARTS



ATV PRO-3500 WINCH

HANDLEBAR-MOUNTED SWITCH INCLUDE STEEL ROPE

- Rated Line Pull: 3,500 lbs. Single line
- Motor: 1.1hp permanent magnet motor 12V DC
- Weight: 28.6 lbs.
- Finish: Black with yellow ends
- Overall Dimensions: 4.9"(L) x 3.0"(W) x 3.0"(H)

PART NO. 47-1235



HAWSE FAIRLEADS



POLISHED ALUMINUM
FAIRLEAD-L (AFL)

POLISHED ALUMINUM
FAIRLEAD-S (AFS)



RECOVERY KITS



ATV RECOVERY KIT ALSO AVAILABLE

WINCH COVER



SNYTHETIC & STEEL ROPES



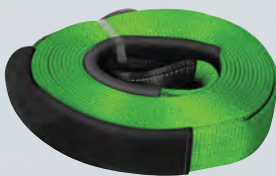
WINCH MOUNTING



COMPRESSORS



STRAPS



SHACKLES



CONTROL UNITS



SNATCH BLOCK



4" SNATCH BLOCK

FAIRLEADS



CLEVIS HOOKS



HARD WORK NEVER LOOKED THIS GOOD

HD RUNNING BOARDS

MOUNT KIT INCLUDED



- Mount kit included
- 14 gauge diamond tread
- Heavy duty welded steel construction
- Step surface includes 1" splash guard made of a continuous single sheet of metal
- Optional boot scraper included
- Silver finish available for vans only
- Made in the USA

FINISH: Textured Black
MATERIAL: Steel
WARRANTY: 3 Year

FINISH: Silver Powder Coat
MATERIAL: Steel
WARRANTY: 3 Year

HD OVERHEAD TRUCK RACK



- Adjustable center cross bar included with each rack
- Slotted leg mounts adjust to fit all models precisely
- Gussets for superior strength
- Made of 2" round tube
- Full bed rail mounting plate included
- Optional hold down clamps available
- U.S. Patent No. D478,802

FINISH: Textured Black
MATERIAL: Steel
WARRANTY: 3 Year

HD HEADACHE RACK



- Angled louvers provide shade and protect rear window
- 2" diameter round top tube
- Welded tie-down hooks
- 4 mounting tabs for lights
- Drilling required

FINISH: Black Powder Coat
MATERIAL: Steel
WARRANTY: 3 Year

FINISH: White Powder Coat
MATERIAL: Steel
WARRANTY: 3 Year



HD HEADACHE RACK
PART NO. 57-8025

HD LADDER RACK



- Heavy duty 1.75" round top tube
- Use 1 in conjunction with headache rack
- Mount 2 for use without headache rack
- Includes 30" adjustable hook and loop strap*
- Drilling required

FINISH: Black Powder Coat
MATERIAL: Steel
WARRANTY: 3 Year

FINISH: White Powder Coat
MATERIAL: Steel
WARRANTY: 3 Year

*Hook and loop strap is provided for support only. It is not to be used as a sole means for securing cargo items.

CUSTOM TRUCK BED MATS

AND TAILGATE MATS



- Heat molded and cut for specific truck bed size and design applications
- 3/8" thick bed mat
- 1/8" thick tailgate mat
- For use with or without a spray liner
- Made of 100% recycled rubber
- Made in the USA

FINISH: Black
MATERIAL: Rubber
WARRANTY: 3 Year



TRUCK-PAL

TAILGATE LADDER



- Lightweight aluminum construction
- Duty rated at 300 lbs.
- Mountable on trucks with bed covers
- Fits open tailgates up to 38" high
- U.S. Patent No. 7,422,263

FINISH: Brushed
MATERIAL: 6063-T6 Alloy Aluminum
WARRANTY: 3 Year





ALWAYS THERE WHEN YOU NEED IT



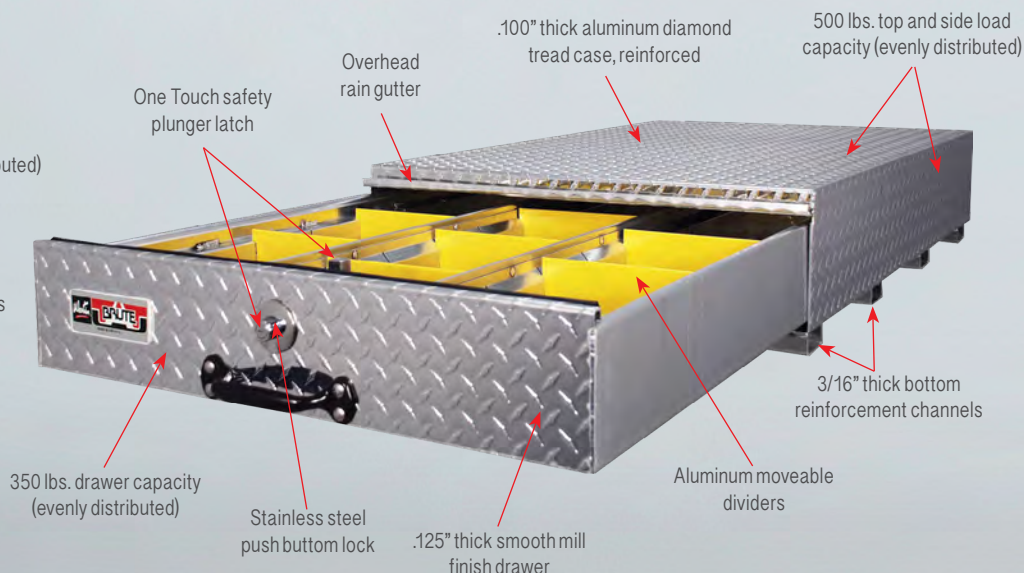
MADE IN THE USA

BEDSAFE BOX

- Made of .100" thick aluminum diamond tread case, reinforced
- 3/16" thick bottom reinforcement channels
- 500 lbs top and side load capacity (evenly distributed)
- 350 lbs drawer capacity (evenly distributed)
- Over drawer rain gutter
- One Touch safety latch
- Fits the beds of pickups, service bodies and vans
- Many sizes available
- Drilling required

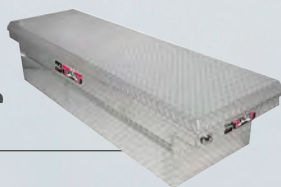
FINISH: Polished
MATERIAL: Aluminum
WARRANTY: Limited Lifetime

8 SIZES TO CHOOSE FROM!





CROSSOVER BOXES



FULL LID AND LOW PROFILE LID

- Available in several dimensions: Standard, deep, wide, and deep & wide
- Made of .063 thick aluminum diamond tread
- Push button rotary latch
- .080 thick aluminum reinforcement throughout the tool box
- Includes a tool and level holder
- HD struts that re-force the lid
- Beveled lid design
- Full rubber weather seal
- Sturdy hinge points
- HD aluminum adjustable tray
- Under body support for added strength
- Full metal shield to protect rotary latches & linkage rods
- "J" hook for easy install

FINISH: Polished

MATERIAL: Aluminum

WARRANTY: Limited Lifetime

FINISH: Black Powder Coat

MATERIAL: Aluminum

WARRANTY: Limited Lifetime



Under body support
for added strength

BRUTE TOOL BOXES

JOB SITE BOX



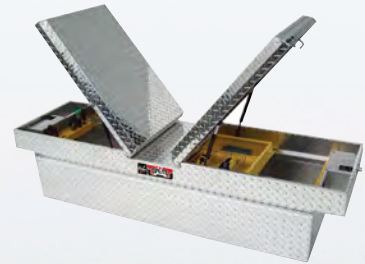
- Reinforced lid
- Locking Paddle Handle
- Beveled lid design – Reinforced
- 48" level holder
- Full rubber seal
- Two chrome handles
- Also available in black powder coated aluminum

CONDUIT CARRIERS



- Made of .063 thick aluminum construction
- Push button rotary latch
- Installation kit included
- Attaches to most ladder racks
- Lockable rotation hasp latch
- Spring loaded door
- Available in polished aluminum

GULL WING BOXES



- Available in several sizes: Standard, Deep, Wide and Deep & Wide
- Push button rotary latch
- Beveled lid design
- Full rubber weather seal
- Two gas props on each lid
- Also available in black powder coated aluminum

LOW PROFILE LOSIDER BOXES



- Low profile above bed rail
- Push button rotary latch
- Increased rear view vision
- Beveled lid design
- Full rubber weather seal
- "J" hook, easy install
- Also available in black powder coated aluminum

CHEST BOXES



- Offset on rear allows 90° lid opening
- Push button rotary latch
- Beveled reinforced lid
- Full rubber weather seal
- Sit below side rails, perfect for 5th wheel trailers
- Full metal guards on gas props
- Also available in black powder coated aluminum

NEW TRAILER TONGUE BOXES



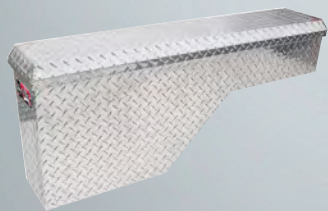
- All aluminum heavy duty box
- 53% lighter than steel boxes
- Designed to mount on trailer tongue
- Offered in two sizes, 34" (4.62 Cu Ft.) or 49" (6.62 Cu Ft.) wide (backside dim.)
- Top lid loading
- Gas shocks cushion opening and closure
- Stainless Steel push button lock
- One-touch safety plunger latch
- 3/16" thick bottom reinforcement channels

LOSIDER SIDE RAIL BOXES



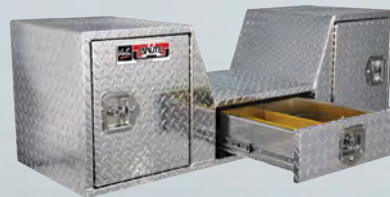
- Made of .063 thick aluminum construction
- Push button rotary latch
- Beveled lid design
- Full rubber weather seal
- "J" hook, easy install
- Full metal guards on gas props
- Also available in black powder coated aluminum

PORK CHOP BOXES



- Over the wheel well design
- Push button rotary latch
- Beveled reinforced lid
- Built-in organizer
- Full metal guards on gas props
- Also available in black powder coated aluminum

GOOSE NECK/FIFTH WHEEL



- Mounts at tailgate*
 - 2 recessed swing door compartments
 - 100 lb. capacity drawer slides
 - Easy access to all compartments
 - Stainless steel folding / locking T-handles
 - Also available in black powder coated aluminum
- *Clearance verification required*

MAXIMUS CHEST BOXES



- Reinforced lid
- Push button rotary latch
- Gas prop & hardware shields
- Full rubber weather seal
- Also available in black powder coated aluminum

HIGH CAPACITY STAKE BED



- Designed for flat / stake beds
- Extra deep and tall
- Reinforced top shelf
- Heavy duty gas shocks on flip up door
- Secure stainless folding locking T-handles
- Option of bottom drawers or fold down doors
- Also available in black powder coated aluminum

TOP SIDER W/ DRAWER



- Designed for flat / stake beds
- Configuration varies by length
- Extra deep and tall
- Bottom drawers with organizers
- Reinforced top shelf to carry the load
- Secure stainless folding locking T-handles
- Also available in black powder coated aluminum

UNDER BODY BOXES



- Top drawer with stainless locking/folding T-handle
- Reinforced bottom door with support cables
- The bottom has a compartment for heavier cargo
- Full rubber weather seal
- Large rain gutter design to channel water away from valuable cargo

HD STEP BOXES



- Stainless Steel locking handle
- .125 thick smooth aluminum body
- .100 thick aluminum diamond tread door
- .080 thick perforated aluminum steps
- Angle reinforced back corners assist in mounting
- Welded aluminum construction
- Available in polished aluminum

HD UNDER BODY DROP DOWN



- Compression handle
- .100 thick diamond tread aluminum construction
- .125 thick smooth aluminum bottom corner reinforcement
- Welded gussets in each corner of door frame
- Stainless steel support cables
- Available in polished aluminum

HD UNDER BODY SWING



- Compression handle
- .100 thick diamond tread aluminum construction
- .125 thick smooth aluminum bottom corner reinforcement
- Welded gussets in each corner of door frame
- Stainless steel hinge
- Available in polished aluminum

HD TOPSIDER BOXES



- Compression handle
- .100 thick diamond tread aluminum construction
- Welded gussets in each corner of door frame
- Overhead rain gutter
- Roller cam latch
- Available in polished aluminum

HIGH CAPACITY HD TOPSIDER



- Compression handle
- .100 thick diamond tread aluminum construction
- Welded gussets in each corner of door frame
- Overhead rain gutter
- Roller cam latch
- Available in polished aluminum

HD UNDER BODY BOXES



- Compression handle
- 100 thick diamond tread aluminum construction
- Genuine trim-lock bulb seal
- Drawers with adjustable dividers
- Roller cam latch
- Available in polished aluminum

THE FIRST LINE OF DEFENSE ALL SEASON

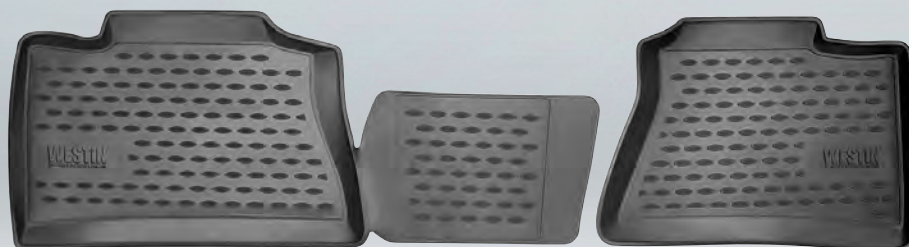
NEW PROFILE FLOOR LINERS

- Protect vehicle carpet from daily wear and tear
- Front row liners protect driver and passenger side floor areas
- Easy to install
- Made of flexible, durable and odorless rubberized polymer
- Liners maintain their shape in heat, cold and from heavy loads
- Designs contour vehicle floor area
- 2" lip around liner edge keeps spills and debris contained
- Raised textured surface for great traction
- Equipped to accommodate retainer hooks where applicable
- Easy to clean with soap and water
- Application specific designs available for trucks, cars, SUV/CUVs
- Great for use in all seasons
- Various liner combination sets available:
 - Front and rear/2nd row (3 or 4 pc)
 - Front, rear/2nd and 3rd row (4 or 5 pc)
 - Cargo liners also available for SUV/CUV (1pc)

FINISH: Black

MATERIAL: Rubberized polymer

WARRANTY: Limited Lifetime



WESTIN®
PROFILE FLOOR LINERS

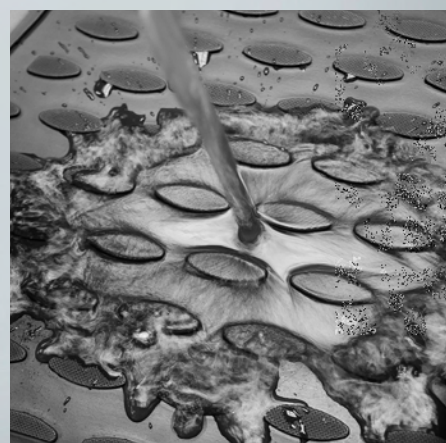
FEATURES



RAISED TEXTURED SURFACE



CONTOURED DESIGN



SPILL PROTECTION

FLOOR LINERS



HEAVY DUTY SURE-FIT LINERS / FRONT ROW

- Full coverage designs
- Rigid core and tactile surface
- Protects carpet for longevity
- Equipped with OE retention hook openings and 3M securing points
- Application specific
- Door seal coverage on most applications
- Available for most trucks and SUV/CUVs



FINISH: Black, Gray & Tan

MATERIAL: Molded Rubberized Copolymer

WARRANTY: Limited Lifetime



HEAVY DUTY

FLOOR LINERS

KEEP IT LOOKING FACTORY NEW



MADE IN THE USA

HEAVY DUTY SURE-FIT LINERS / 2ND ROW



- Custom fit for specific applications
- Full coverage designs
- Application specific
- Available for most trucks and SUVs

FINISH: Black, Gray & Tan
MATERIAL: Molded Rubberized Copolymer
WARRANTY: Limited Lifetime

HEAVY DUTY SURE-FIT LINERS / 3RD ROW



- Custom fit for specific applications
- Full coverage designs
- Application specific
- Available for SUVs with 3rd seat

FINISH: Black, Gray & Tan
MATERIAL: Molded Rubberized Copolymer
WARRANTY: Limited Lifetime

HEAVY DUTY SURE-FIT LINERS / CARGO



- Protects cargo area
- Full coverage designs
- Application specific
- Available for CUV and SUVs

FINISH: Black, Gray & Tan
MATERIAL: Molded Rubberized Copolymer
WARRANTY: Limited Lifetime



ENHANCE YOUR VEHICLE'S APPEARANCE



TAPE-ON "SLIM" WIND DEFLECTORS
PART NO. 72-31482

PLATINUM BUG SHIELD
PART NO. 72-91130

WIND DEFLECTORS TAPE-ON "SLIM"



- Sleek design reduces wind and noise
- Attaches using 3M automotive grade tape
- Reduces heat and glare
- Allows fresh air circulation during any weather condition

FINISH: High Gloss Smoke
MATERIAL: Aircraft Grade Acrylic
WARRANTY: Limited Lifetime

WIND DEFLECTORS IN-CHANNEL



- Slips directly into the window channel
- Installs quickly and easily without exterior tape
- Secured using 3M automotive grade tape
- Allows fresh air circulation during any weather condition

FINISH: High Gloss Smoke
MATERIAL: Aircraft Grade Acrylic
WARRANTY: Limited Lifetime

PLATINUM BUG SHIELD



- Helps protect paint and windshield from rock chips
- Strong 1-piece construction
- Manufactured from high-impact acrylic
- Will not flex, flutter or vibrate at highway speeds
- No drilling required on most applications

FINISH: Smoke and Clear
MATERIAL: High-Impact Acrylic
WARRANTY: Limited Lifetime

WIND DEFLECTORS CAB GUARD



- Shades cab from sun
- Reduces headlight glare during night driving
- Available in smoke and clear
- Allows fresh air into vehicle without being windblown

FINISH: High Gloss Smoke
MATERIAL: Aircraft Grade Acrylic
WARRANTY: Limited Lifetime

ULTRAGUARD BUG SHIELD



- Full-wrap bug shield
- Attractive design
- Manufactured from high-impact acrylic
- Bump-ons keep shield from touching hood
- Made in the USA

FINISH: Smoke and Clear
MATERIAL: High-Impact Acrylic
WARRANTY: Limited Lifetime

FRONT CAPS



- Protects tailgate against damage
- Gives vehicle a finished factory look
- Installs quickly and easily with 3M tape
- Matching bed caps available

FINISH: Black
MATERIAL: High-Impact ABS
WARRANTY: Limited Lifetime

WIND DEFLECTORS WIND GUARD



- Flawless aerodynamic styling
- Allows fresh air in any weather condition
- Attaches using 3M automotive grade tape

FINISH: High Gloss Smoke
MATERIAL: Aircraft Grade Acrylic
WARRANTY: Limited Lifetime

HEADLIGHT AND TAIL LIGHT COVERS



- Protects lights from road debris
- Available in smoke and clear
- Application specific
- Installs in seconds

FINISH: High Gloss Smoke
MATERIAL: High-Impact Acrylic
WARRANTY: Limited Lifetime

TAILGATE COVERS



- Protects tailgate against damage
- Gives vehicle a finished factory look
- Installs quickly and easily with 3M tape
- Matching bed caps available

FINISH: Black
MATERIAL: High-Impact ABS
WARRANTY: Limited Lifetime

SUN ROOF



- Installs quickly and easily
- Attaches using 3M automotive grade tape

FINISH: High Gloss Smoke
MATERIAL: Aircraft Grade Acrylic
WARRANTY: Limited Lifetime

HOOD SCOOPS



- Gives the look of a performance hood
- Easily paintable to match your vehicle
- Manufactured from high impact ABS
- Universal fit
- Attaches using 3M automotive grade tape

FINISH: Paintable
MATERIAL: High-Impact ABS
WARRANTY: Limited Lifetime

BED CAPS



- Protect bed railing against damage
- Gives vehicle a finished factory look
- Install quickly and easily with 3M tape
- Available with or without stake pocket holes in ribbed or smooth finish

FINISH: Black
MATERIAL: High-Impact ABS
WARRANTY: Limited Lifetime



SKYTOP FRONT

JEEP WRANGLER ACCESSORY

- Manufactured from high gloss smoke impact acrylic
- Translucent high gloss smoke
- Allows an open feel, while providing protection from the elements
- Reduces heat, glare and wind

FINISH: High Gloss Smoke

MATERIAL: High-Impact Acrylic

WARRANTY: Limited Lifetime

PART NO. 72-51062

Fits Jeep® Wrangler Limited and Unlimited



BETTER VIEW OF THE OUTDOORS

SKYTOP COMBO

JEEP WRANGLER ACCESSORY

- Quick easy no drill installation
- Custom fit
- Easy on, easy off
- No drilling required

FINISH: High Gloss Smoke

MATERIAL: High-Impact Acrylic

WARRANTY: Limited Lifetime

PART NO. 72-51066

Fits Jeep® Wrangler Unlimited

FRONT SKYTOP



REAR SKYTOP

RECEIVER HITCHES



RECEIVER HITCHES - CLASS I

2,000 LB TOWING CAPACITY

- Up to 2,000 lbs. towing capacity
- 1.25" receiver
- 2" main body tubes, made of e-coated steel
- Unique delta cut safety chain loops
- Steel capped tube ends include a rubber plug for a finished look
- E-Coated steel for maximum corrosion protection
- Includes mounting tab for electrical connector
- Most feature a through bracket construction with double sided welds
- Stylized forged steel collar
- No drilling required for most applications
- Patent Pending
- Tested and validated by an independent lab to SAE specification J684. SAE J684 supersedes V.E.S.C. Regulation V5
- Textured black powder coat finish



WORKMANSHIP
WARRANTY: Limited Lifetime

FINISH: TEXTURED BLACK
WARRANTY: 3 Year



RECEIVER HITCHES - CLASS III & IV

3,500 – 10,000 LB TOWING CAPACITY

- 3,500 – 5,000 lbs. towing (Class III)
- Up to 10,000 lbs. towing (Class IV)
- Trailer weight distributing up to 10,000 lbs.
- 2" receiver
- 2.5" structural steel tube
- Unique delta cut safety chain loops
- Steel capped tube ends include a rubber plug for a finished look
- E-Coated steel for maximum corrosion protection
- Includes mounting tab for electrical connector
- Most feature a through bracket construction with double sided welds
- Stylized forged steel collar
- No drilling required for most applications
- Patent Pending
- Tested and validated by an independent lab to SAE specification J684.
SAE J684 supersedes V.E.S.C. Regulation V5
- Textured black powder coat finish



WORKMANSHIP
WARRANTY: Limited Lifetime

FINISH: TEXTURED BLACK
WARRANTY: 3 Year

TOW ELECTRICAL

W4 SERIES TIME ACTUATED LED DISPLAY



- 2-Segment LED display
- Plugs into most OEM ports
- Controls 2 or 4 brake magnets
- Manual over-ride control
- Pigtail harness
- Mounts in any position
- EZ touch thumb wheel

W6 SERIES TIME ACTUATED DIGITAL DISPLAY



- 2-Segment digital display
- Plugs into most OEM ports
- Controls 2 to 8 brake magnets
- Manual over-ride control
- Pigtail harness
- Mounts in any position
- EZ touch thumb wheel

W8 SERIES PROPORTIONAL DISPLAY



- 6-Segment blue LCD digital display
- Plugs into most OEM ports
- Controls 2 to 8 brake magnets
- Manual over-ride control
- Pigtail harness
- Mounts in any position
- EZ touch thumb wheel

W10 SERIES GYRO ACCELEROMETER



- Plugs into most OEM ports
- Controls 2 to 8 brake magnets
- Manual over-ride control
- Pigtail harness
- Mounts in any position
- Overload indicator
- Manual brake activates brake lights

WIRING HARNESSES



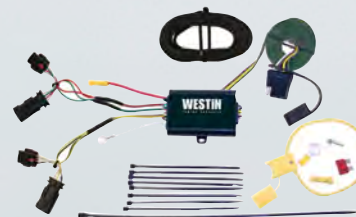
- Engineered to the highest industry standards
- Designed to mate seamlessly with OEM systems
- 12 gauge wire for lasting durability and safety
- 100% copper stranded wire
- For use with all Westin brake controllers

BREAK-AWAY KITS



- Push-To-Test confirms battery is fully charged, charging or low
- 5 AMP hour battery
- Break-away switch
- Mounting hardware included

T-CONNECTORS



- Complete one-piece harness designs
- Engineered to the highest industry standards
- Designed to mate seamlessly with OEM systems
- 100% copper stranded wire
- All T-Connectors contain OEM quality harness components, terminals, and connection housings
- Professional installation recommended

ADAPTERS



- Adapts OEM port to match your trailer requirements
- Moisture resistant
- Flat brass terminals
- Engineered and manufactured to SAE standards
- Environmentally tested

CONNECTORS



- Moisture resistant
- 100% copper stranded wire
- Flat brass terminals
- Engineered and manufactured to SAE standards
- Environmentally tested

MOUNTING BRACKETS



- Stamped steel for durability
- Mounting hardware included
- Engineered and manufactured to SAE standards
- Black powder coat finish

TAIL LIGHT CONVERTERS



- 2-Wire systems to tow vehicles equipped with 3-Wire systems
- Includes integrated protected cover
- Protective 4-Flat connector dust cap included
- Easy to install

TRAILER BALLS

- Available in 3 ball sizes 4 shank lengths and 2 shank diameters to choose from
- Weight capacity range: 2,000 – 7,500 lbs.
- Chrome finish
- Nut and washer included
- Limited lifetime warranty



NUT AND WASHER

- Durable zinc finish
- Limited lifetime warranty



PIN AND CLIP

- For securing ball mounts and accessories to receiver hitches
- Limited lifetime warranty



QUICK LINK

- Provide quick connectors of chain, cable and rope
- Limited lifetime warranty



SAFETY CHAIN

- Secures the trailer to tow vehicle in case of hitch disconnect
- Limited lifetime warranty



COUPLERS

- Durable zinc finish
- Lockable latch
- Limited lifetime warranty



CLASS I BALL MOUNTS

- Available in 3 drop sizes
- Black powder coat finish
- 3 year warranty



CLASS III BALL MOUNTS

- Available in 5 drop sizes
- Black powder coat finish
- 3 year warranty



RECEIVER EXTENDER

- Extends receiver tube providing additional clearance
- Black powder coat finish
- 3 year warranty



RECEIVER ADAPTER

- Adapts receiver tube to a different size
- Black powder coat finish
- 3 year warranty



MULTI-BALL MOUNT

- Fully welded trailer balls
- Includes 1 7/8", 2" and 2 5/16" ball sizes
- Black powder coat finish
- 3 year warranty



BALL MOUNT KITS

- Chrome ball with black draw bar
- Pin and clip included
- Complete with trailer ball
- 3 year warranty





UNIVERSAL AND PERFECT MATCH BUMPERS



FEY DIAMONDSTEP

UNIVERSAL BUMPERS

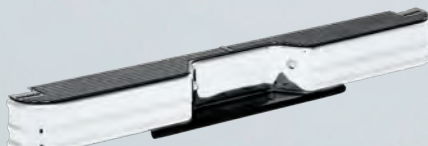


- Mount kit sold separately
- Popular diamond tread design
- Full size tongue weight of 800 lbs and 8,000 lbs trailer weight
- Downsize and compact are 350 lbs tongue weight and 3,500 lbs is trailer weight certified
- V5 tested certified to SAE J684

FINISH: Chrome, Black and Silver
MATERIAL: Cold Rolled Steel
WARRANTY: 3 Year

FEY SURESTEP

UNIVERSAL BUMPERS



- Mount kit sold separately
- Full size tongue weight of 800 lbs and 8,000 lbs trailer weight
- 7 gauge hitch plate for full size
- 10 gauge hitch for mid size and connect
- 12 gauge face channel for full size trucks
- 13 gauge for mid size and compact
- V5 tested certified to SAE J684

FINISH: Chrome, Black and Silver
MATERIAL: Cold Rolled Steel
WARRANTY: 3 Year

FEY SURESTEP DELUXE

UNIVERSAL BUMPERS



- Mount kit sold separately
- Full size tongue weight of 800 lbs and 8,000 lbs trailer weight
- 12 gauge face channel for full size trucks
- 13 gauge for mid size and compact trucks
- "Cold rolled bright steel" face channel
- V5 tested certified to SAE J684
- Molded polymer step surface

FINISH: Chrome, Black and Silver
MATERIAL: Cold Rolled Steel
WARRANTY: 3 Year



FEY PERFECT MATCH

SERIES BUMPERS

- Mount kit included
- OE style
- Complete assembly
- Molded polymer step pads
- V5 tested certified to SAE J684

FINISH: Chrome, Black and Gray
MATERIAL: Molded Polymer Step Pads
WARRANTY: 3 Year



CHEVY/GMC
SILVERADO/SIERRA "CLASSIC"
PART NO. 31006



DODGE RAM
PART NO. 31004



FORD SUPERDUTY
PART NO. 31002



DODGE RAM
PART NO. 31005

WESTIN[®]

AUTOMOTIVE PRODUCTS, INC.



1 TRUSTED SOURCE
SINCE 1977
WESTINAUTOMOTIVE.COM

CUSTOMER SERVICE / SALES

Ph: 800.345.8476
Fax: 626.813.4890
E-mail: customerservice@westinautomotive.com
7AM-4PM PST

WESTIN SALES / MARKETING

Ph: 626.960.6762
Fax: 626.960.2055

DISTRIBUTED BY



SEARCH #WESTINAUTO
AND STAY CONNECTED!



320 W. COVINA BLVD. SAN DIMAS, CA 91773

5.4106 | W02 | 031517

©2017 Westin Automotive Products, Inc. Printed in U.S.A.