

RUPES®




Big Foot®
POLISHING SYSTEMS

PERFECT RESULTS

Achieving polished perfection on a surface as efficiently as possible is the primary goal of the BigFoot project. BigFoot simplifies the polishing process, substantially reducing time and producing the optimum result. Thanks to the complete range of polishers, pads and compounds, all designed to work in synergy, BigFoot's innovative system based approach guarantees exceptional results in less time for virtually any polishing application.







ROTARY



GEAR DRIVEN

BIGFOOT POLISHING SYSTEMS

ROTARY : a rotating disc, rotates on a central axis with the highest velocity being at the pads edge. Rotary tends to be the most invasive movement on the surface, generating substantial friction and heat which can lead to burns, strike throughs, and rotary induced swirl marks if used improperly. In the hands of a skilled technician a rotary tool features the lowest vibration levels of any tool movement, but a great deal of time is required to become proficient with rotary polishers. Rotary movement is most commonly used for polishing operations.

GEAR DRIVEN : the pad follows an orbit, the diameter of which depends on the distance between the rotational axis of the drive shaft and the central axis of the backing plate. The pad is constrained to rotate about its own central axis, due to the inclusion of a gear. The number of orbits at each revolution of the disc is always constant and depends on the parameters of the gearing used. The gear

driven movement is more aggressive on surfaces compared to the random orbital movement and generates a generally higher vibration level.

RANDOM ORBITAL : the backing plate follows an orbit, the diameter of which depends on the distance between the rotational axis of the drive shaft and the central axis of the backing plate. The backing plate is free to rotate about its own central axis. The backing plate is free to rotate at varying velocities and directions by effect of the centrifugal force of the offset movement and by effect of friction. Should the friction forces be such as to prevent rotation of the disc while the tool is still operating, the random orbital movement would simply become an orbital movement. The number of disc rotations is variable and independent of the number of orbits performed. The random orbital movement is at present the best solution in terms of effectiveness and surface treatment quality.



RANDOM ORBITAL



TRIPLE ACTION

TRIPLE ACTION: RUPES has introduced a new type of movement deemed Triple Action. The power of a motor can be expressed as the product of the torque multiplied by the velocity. During the normal use of a tool, the operator applies a variable load, which by effect of friction on the surface and the work carried out by the motor might be such as to reduce the number of revolutions of the motor. The load applied by the operator during normal use of a tool varies significantly over a measure of time, causing large variations in velocity of the number of orbits and the rotation of the pad and consequently reducing the uniformity and effectiveness of the process.

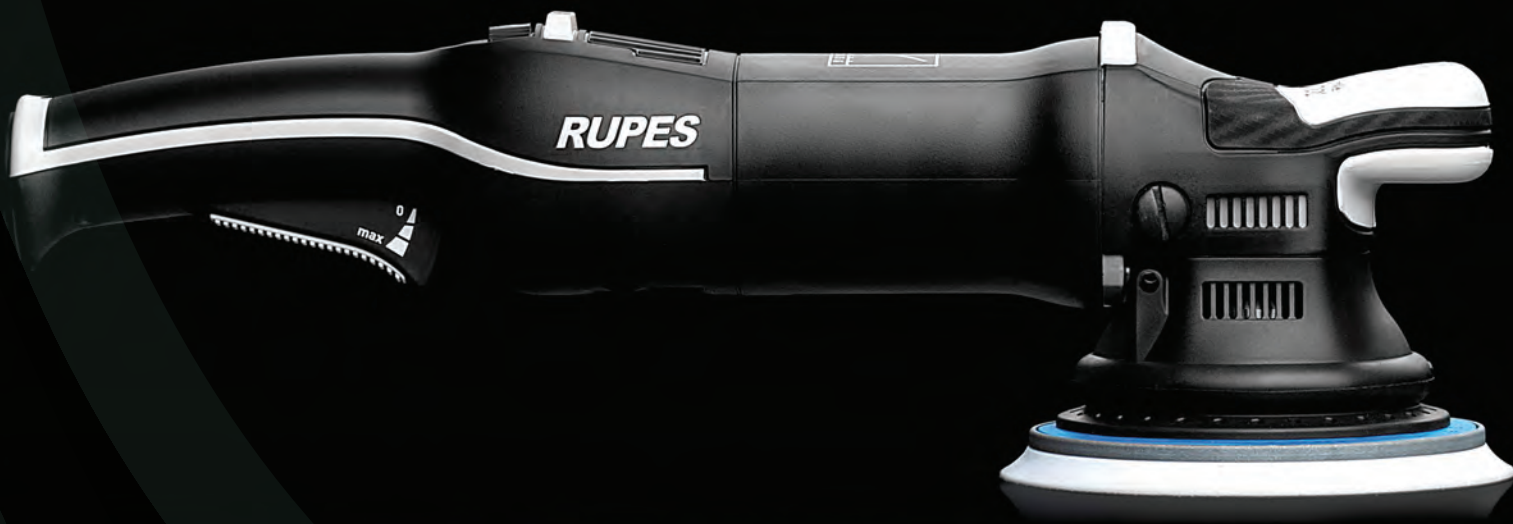
A more homogeneous process leads to a significant reduction in working times. In the case of triple action tools, and similar to the movement of random orbital tools the disc follows an orbit and is free to rotate about its own central axis. Thanks to a special epicyclic gear reducer located

in front of the cam group, the torque value is significantly increased while at the same time the velocity is reduced. This design greatly reduces the impact of varying levels of pressure applied by the operator and results in a highly consistent surface finish.

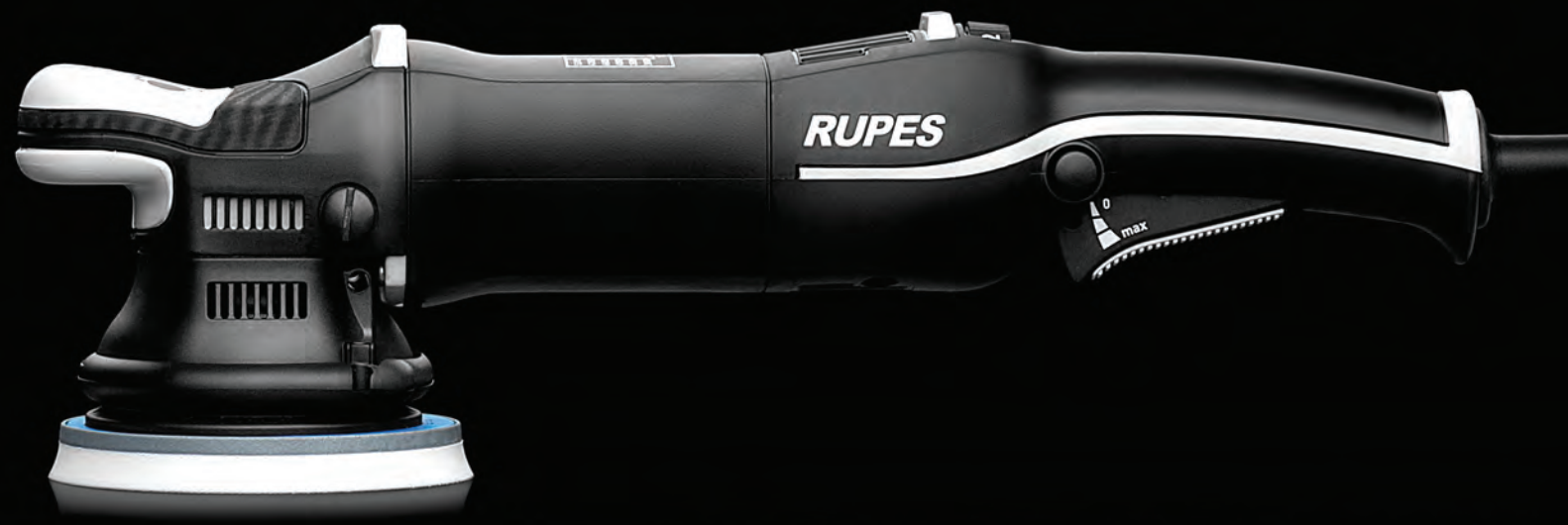
This provides a considerable improvement in the surface finish as well as a drastic reduction in the vibration levels. From the very first use it is clear how advantageous this configuration is in terms of effectiveness and vibration reduction all thanks to the introduction of the epicyclic gear reducer. This is a technical improvement that so profoundly improves and changes the functionality of the tool that it merits a new movement category, the Triple Action.

BIGFOOT Mark III

Enhancing working quality and simplifying jobs is our main skill. We produce tools that change the way people work, helping professionals to work better, faster, and more effectively. We know that the satisfaction of a good end result is something priceless, and work hard to let you work easily. The BigFoot random orbital polishing system is tailored specifically to the professionals who demand the best finish possible.

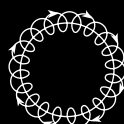


Based on a larger diameter random orbital movement, it guarantees faster paint correction than any other system available, setting the stage for 21st century detailing. From the RUPES ongoing research two new machines are born: two high-tech orbital polishers for the smoothest polishing experience ever. Discover the new **LHR 21MarkIII** & **LHR 15 MarkIII**. Discover the next level of perfection.



LHR 21 MarkIII

With its 21mm orbit and its Ø150mm backing pad, the **LHR 21 MarkIII** random orbital polisher is the perfect tool for working large surface areas. The LHR 21 MarkIII allows the operator to achieve ultra-high quality finishes, even with limited passes. Improved efficiency guarantees more power and torque on every surface.



RANDOM ORBITAL



TECHNICAL DATA

Ø backing pad	mm-in	150 - 6"
Ø orbit	mm-in	21-13/16"
Power	Watt	500
R.P.M.		3000 - 4500
Weight	kg-lbs	2.7 - 5.95
Speed control		•
Backing pad thread		M8-F
Electrical Cord	m-ft	9 - 29.5'


Mark III



IMPROVED ERGONOMICS

The rubberized front grip of the MarkIII offers exceptional comfort for the operator while providing a non-slip surface for control. The improved rear handle also integrates rubberized surfaces for improved feel. Two strategically placed, non-marking, tool rests provide stability when the tool is not in use as well as additional protection against unintended impact. The continued refinement of the BigFoot random orbital platform in MarkIII reinforces its best in class reputation, making the best even better.

ELECTRONIC SPEED CONTROL DIAL

The new electronic speed control dial allows for easy adjustment of the top speed of the polisher without requiring the operator to move his hands. The larger dial is easily adjusted with a move of the thumb. High visibility numbers and a more positive feedback from the movement of the dial make speed changes feel more deliberate, allowing operators to select the ideal speed for the task without any interruption to the polishing process.



9 METER ELECTRICAL CORD

The new Heavy Duty extra long 9mt cord is gauged to deliver maximum power to the polisher for safe, efficient operation. The longer cord save you time, steps and hassles since the user doesn't have to use additional extension cords when polishing around a car.



PROGRESSIVE TRIGGER

Adding an additional layer of control is the new progressive trigger. Acting as a throttle to control speeds within the dial range, the progressive trigger allows the operator to make subtle adjustments for precise control without interruption of the process or need to reposition the grip to access the speed dial.



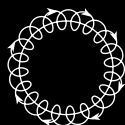
DESIGN

Attention to detail is something more than just attractive design. Every detail, such as the rubber support positioned on the body of the machine to keep it stable during the non-working stages, is the result of meticulous research aimed at achieving maximum operator comfort.



LHR 15 MarkIII

Built to handle any detailing situation, the new **LHR 15 MarkIII** is the new frontier of detailing. The ergonomic design allows for precise paint correction with complete comfort. The LHR 15 MarkIII operates at a higher rpm compared to the LHR21 MarkIII. This increased speed provides equivalent correction and does so with a pad diameter and orbit that are more conducive to curved, convex, concave or varied surfaces.



RANDOM ORBITAL



TECHNICAL DATA

Ø backing pad	mm-in	125 - 5"
Ø orbit	mm-in	15 - 19/32"
Power	Watt	500
R.P.M.		3000 - 5200
Weight	kg-lbs	2.6 - 5.73
Speed control		•
Backing pad thread		M8-F
Electrical Cord	m-ft	9 - 29.5'


Mark III



IMPROVED ERGONOMICS

The rubberized front grip of the MarkIII offers exceptional comfort for the operator while providing a non-slip surface for control. The improved rear handle also integrates rubberized surfaces for improved feel. Two strategically placed, non-marking, tool rests provide stability when the tool is not in use as well as additional protection against unintended impact. The continued refinement of the BigFoot random orbital platform in MarkIII reinforces its best in class reputation, making the best even better.

ELECTRONIC SPEED CONTROL DIAL

The new electronic speed control dial allows for easy adjustment of the top speed of the polisher without requiring the operator to move his hands. The larger dial is easily adjusted with a move of the thumb. High visibility numbers and a more positive feedback from the movement of the dial make speed changes feel more deliberate, allowing operators to select the ideal speed for the task without any interruption to the polishing process.



9 METER ELECTRICAL CORD

The heavy duty, extra long, 9 meter (29.5 ft) cord is gauged to deliver maximum power to the polisher for safe, efficient operation. The longer cord saves time, steps and hassles associated with the use of additional extension cords when polishing around a car.

PROGRESSIVE TRIGGER

Adding an additional layer of control is the new progressive trigger. Acting as a throttle to control speeds within the dial range, the progressive trigger allows the operator to make subtle adjustments for precise control without interruption to the polishing process.



DESIGN

Attention to detail is something more than just attractive design. Every detail, such as the rubber support positioned on the body of the machine to keep it stable during the non-working stages, is the result of meticulous research aimed at achieving maximum operator comfort.

BIGFOOT LH 19E

Rotary Polisher

Featuring a high torque motor, compact design, premium ergonomics and a lightweight housing, the LH 19E is one of the most capable and maneuverable rotary polishers on the market. Its lightweight and powerful design makes it the ultimate rotary polishing solution for a variety of industries including automotive detailing, collision repair and refinishing, marine, and more.



ROTARY



TECHNICAL DATA

Ø polishing foam pad max	mm-in	200 - 8"
Ø backing pad available	mm-in	125 - 5" / 150 - 6" / 165 - 6,5"
Power	Watt	1200
R.P.M.		450 - 1700
Weight	kg-lbs	2.2 - 4.85
Speed control		•
Backing pad thread		M14 and 5/8"
Electrical Cord	m-ft	9 - 29.5'



ANTI-VIBRATION LOOP HANDLE

An innovative loop handle allows users to hold the polisher securely at different angles for precision and stability during the polishing process. The soft grip material and the special design absorb and dissipate vibration to improve operator comfort as well as protect delicate surfaces from damage. The new loop handle is included standard with each tool.

ANTI-VIBRATION SIDE HANDLE

A soft grip side handle reduces the vibration during the polishing operation and provides comfortable control of the polisher. Featuring a new design and the specialized materials to absorb and dissipate the vibration from the machine the handle can be added to either side, depending on operator preference, and is included with the polisher in select kits.



9 METER ELECTRICAL CORD

The heavy duty extra long 9 meter (29.5 ft) cord is gauged to deliver maximum power to the polisher for safe, efficient operation. The longer cord saves time, steps and hassles associated with the use of additional extension cords when polishing around a car.

ELECTRONIC SPEED CONTROL DIAL

An all new variable speed dial provides the ability to adjust speeds for specific applications. The dial features larger numbers, a click sensation to indicate speed changes and is positioned for effortless adjustment during the polishing process.



PROGRESSIVE TRIGGER

Adding an additional level of control, the LH19E includes a progressive trigger. This trigger acts as a throttle allowing the operator to control speeds within the dial range to deliver the exact desired speed and to adjust quickly as needed without interruption to the work process.

BIGFOOT MILLE LK 900E

Gear Driven Dual Action Polisher

Bridging the gap between rotary and free spinning orbital polishers in the BigFoot family, the Mille provides a balance of power, ergonomics, and capability for operators who crave a gear driven solution. Featuring a wide assortment of innovative features as well as a revolutionary clockwise rotational movement, a first in the gear-driven orbital category, the BIGFOOT Mille delivers powerful defect removal, versatility, and consistent performance in an ergonomic package designed with operator comfort and efficiency of work in mind.



GEAR DRIVEN



TECHNICAL DATA

Ø backing pad	mm-in	125 - 5" / 150 - 6"
Ø orbit	mm-in	5 - 3/16"
Power	Watt	900
R.P.M.		265 - 535
Weight	kg-lbs	2.80 - 6.17
Speed control		•
Backing pad thread		6 x M4
Electrical Cord	m-ft	9 - 29.5'





CLOCKWISE ROTATION

The BIGFOOT Mille uses a specially designed electric motor, developed in-house by RUPES. This design allows for a clockwise rotational movement which translates to increased levels of control and comfort for the operator. Competitive tools feature a counter-clockwise movement which can increase unwanted lateral movement and create fatigue for the operator.

9 METER ELECTRICAL CORD

The heavy duty extra long 9 meter (29.5 ft) cord is gauged to deliver maximum power to the polisher for safe, efficient operation. The longer cord saves time, steps and hassles associated with the use of additional extension cords when polishing around a car.



ELECTRONIC SPEED CONTROL DIAL

An all new variable speed dial provides the ability to adjust speeds for specific applications. The dial features larger numbers, a click sensation to indicate speed changes, and is positioned for effortless adjustment during the polishing process.

PROGRESSIVE TRIGGER

Adding an additional level of control, the Mille includes a progressive trigger. This new trigger design acts as a throttle allowing the operator to control speeds within the dial range to deliver the exact desired speed and to adjust quickly as needed.



DOUBLE RUBBER SUPPORT

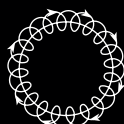
Every aspect of the Mille has been considered in the design, even when the tool is not being used. Two rubber supports are positioned on the body of the machine to keep it stable when resting on a table or cart.





LHR 12E DUETTO

This simple, intuitive and exceptionally comfortable tool allows any operator to tackle even the most challenging polishing operation. The LHR 12E is perfect for sanding and correction operations as well as final finishing and anti-hologram passes. The 12mm orbit allows the operator exceptional control in difficult applications such as edge and profile work, making “perfect detailing” an easy operation for novices and professionals alike.



RANDOM ORBITAL



TECHNICAL DATA		
Ø backing pad	mm-in	125 - 5"
Ø orbit	mm-in	12 - 1/2"
Power	Watt	400
R.P.M.		4000 - 5500
Weight	kg-lbs	2.6 - 5.73
Speed control		•
Backing pad thread		M8
Electrical Cord	m-ft	9 - 29.5'

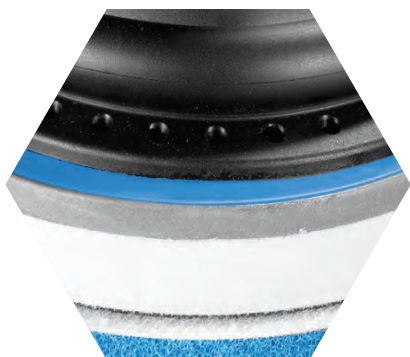


ELEGANTLY DESIGNED

With its nonslip rubber inserts in the front cover, the LHR 12E is perfect for all polishing operations in difficult to reach zones. The operator can work in comfort to produce the best results possible.

DUAL FUNCTION: SANDING AND POLISHING

The LHR 12E and its 12mm orbit can be used with fine grit abrasives to speed up deep correction operations. The tool can then use foams and compounds to refine the abrasive scratches and restore a lustrous finish.



ANTISPINNING SHROUD

The dual function antispinning shroud is designed to protect the operator against the moving parts and act as a clutch for the backing pad, preventing further stress on the foam polishing pad when it is not in direct contact with the surface.

ELECTRONIC SPEED CONTROL MODULE

The speed controller is both practical and easy to use. The speed of the polisher can also be easily adjusted without interrupting the work.

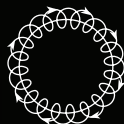


DESIGN

The attention to detail is not limited to just the innovative and attractive design. The modern lines and exceptional technical quality are combined with a number of details that are the result of meticulous research aimed at achieving maximum operator comfort. The non-slip rubber inserts are numerous and have many functions. In particular, the insert on the machine body is used to support the polisher when placed on a surface.

LHR 75E MINI

Details: the LHR 75E is the polisher for difficult shapes and for spot repair operations. The LHR 75E is a must for any detailer wishing to obtain perfect results, even in the most difficult areas. The 12mm orbit, combined with RUPES accessories and consumables, achieves quick results on areas such as mudguards, front panels, etc.



RANDOM ORBITAL



TECHNICAL DATA		
Ø backing pad	mm-in	75 - 3"
Ø orbit	mm-in	12 - 1/2"
Power	Wat	400
R.P.M.		4000 - 5500
Weight	kg-lbs	2.3 - 5.07
Speed control		•
Backing pad thread		M6-F
Electrical Cord	m-ft	9 - 29.5'



ELEGANTLY DESIGNED

With its nonslip rubber inserts on the front cover, the LHR 75E it is perfect for all polishing operations in difficult to reach areas. The operator can work in perfect comfort to produce the best possible results.

ON-OFF SWITCH LOCK

Lined in nonslip rubber, the on/off lever of the BigFoot polisher ensures a controlled soft start, giving the operator full control over the tool.



MAXIMUM FLEXIBILITY

Thanks to the backing pad with small diameter, the LHR 75E is perfect in polishing applications on small and intricate areas. The small machine dimensions and the 12mm orbit allow a comfortable handling and accuracy in detail polishing.

ELECTRONIC SPEED CONTROL MODULE

The speed controller is both practical and easy to use. The speed of the polisher can also be easily adjusted without interrupting the work.



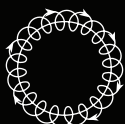
DESIGN



The attention to detail is not limited to just the innovative and attractive design. The modern lines and exceptional technical quality are combined with a number of details that are the result of meticulous research aimed at achieving maximum operator comfort. The non-slip rubber inserts are numerous and have many functions. In particular, the insert on the machine body is used to support the polisher when placed on a surface.

nano iBrid

The Bigfoot nano is more than just the introduction of new technology. It is a **design philosophy** that will lead us into the future evolution of RUPES. iBrid ushers in an era of innovation, **flexibility, versatility, and sustainability**. The new iBrid manufacturing concept will increase process efficiency and optimize the user experience. The functionality of a battery and the option of corded electric supply combined with the choice of three different movements and various attachments for polishing, sanding, or cleaning operations means the nano that will revolutionize the approach surface correction, detailing, cleaning and more.



RANDOM ORBITAL



ROTARY



TECHNICAL DATA

MODEL	HR81M	HR81ML
Voltage VDC (Volt)	10.8 - 12	10.8 - 12
R.P.M.	2000 - 5000	2000 - 5000
Battery Life	~30min*	~30min*
Charging time	~20min	~20min
Electronic speed control	•	•
Overcurrent protection	•	•
Soft Start	•	•
LED indication	•	•
Dimensions (mm)	287x70x47**	332x70x47**
Weight (g - lbs)	470 - 1.04**	520-1.15**

*The value is referred to a use of the battery pack 9HB120LT, fully charged with a charger 9HC120LT and normal use with a Rupes polisher HR81M/HR81ML and functional unit orbit 12mm and Ø30mm polishing pad.

**Measured without a functional unit, battery pack and power supply.



ERGONOMIC DESIGN

Most users prefer the freedom of the battery when using the nano, but when the job calls for extended use the tapered shape of the power supply maintains the compact design and single handed operation of the tool while providing continuous operation.

ON/OFF SPEED CONTROL DIAL

Acting both as the on/off switch and a variable speed control with settings from 1 through 6, the speed control dial is easy to adjust and provides high visibility of the selected setting, even when adjusting during operation. A multi-function LED indicator directly above the speed control dial provides battery and tool status.



BATTERY CHARGER

Custom designed to fit the Nano's unique battery pack system, the charging station indicates charge status using integrated LED lights and provides 100% charge from zero in approximately 20 minutes.

ROTARY ACTION

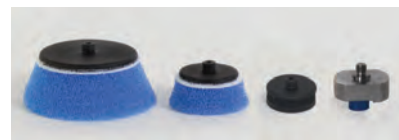
Rapid paint correction on edges and profiles with **Ø30mm** (1.18" in) backing plate or cleaning with special brush accessories.



DUAL ACTION Ø3mm

Micro-sanding and denibbing or Ultra high gloss polishing with:

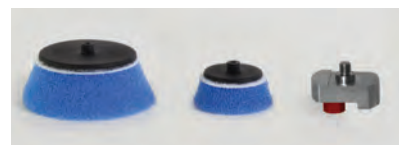
- Ø30mm** (1.18" in) backing pad
- Ø50mm** (1.96" in) backing pad



DUAL ACTION Ø12mm

Paint correction and high gloss polishing with:

- Ø30mm** (1.18" in) backing pad
- Ø50mm** (1.96" in) backing pad



BIGFOOT TRIPLE ACTION





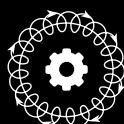
**HIGH TORQUE EFFICIENCY
IMPROVED PERFORMANCE
REDUCTION IN WORKING TIMES
REDUCTION IN THE VIBRATION LEVELS**



BIGFOOT LTA125 - LTA75

Triple Action Polishers

Ergonomic, lightweight, and powerful. The LTA 125 and LTA 75 introduce an innovative technology defined as "Triple Action" in the pneumatic polisher category. The dual action random orbital movement of this pneumatic tool is combined with epicyclic gearing that delivers levels of torque and consistency never before experienced with pneumatic tools. The LTA tools provide incredible balance and torque and are extremely intuitive, easy to maneuver and can be used for polishing operations in several industries including automotive detailing, aviation, marine and industrial, and many more.



TRIPLE ACTION



TECHNICAL DATA

MODEL		LTA75	LTA125
Ø backing pad	mm-in	75 - 3"	125 - 5"
Ø orbit	mm-in	15 - 19/32"	12 - 1/2"
Working pressure	bar-PSIG	6.2 - 90	6.2 - 90
Air consumption max	l/min-CFM	380 - 13.4	400 - 14.1
R.P.M.		0-6000	0 - 6000
Weight	kg-lbs	0.90 - 1.15	1.3 - 2.13
Speed control		•	•
Backing pad thread		M6	M8

HIGH TORQUE EFFICIENCY

Thanks to a special epicyclic gear reducer located in front of the cam group, the torque value is significantly increased while at the same time the velocity is reduced. With the use of this solution the impact of a variable in performance (the load applied by the user) is substantially minimized resulting in a more consistent final finish.



SPEED CONTROL

The speed control on the handle is both practical and easy to use. The speed of the polisher can also be regulated during use, thus avoiding any interruption of the polishing operation.

NOISE REDUCTION AIR OUTLET

In addition to being an air outlet, the device also acts as a silencer. Mounted on the base near the air connection, the small silencer is an extremely effective way of deadening the noise generated by the flow of compressed air. This is especially beneficial in environments where many tools may be in use simultaneously.

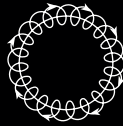


DESIGN

The attention to detail is not limited to just the innovative and attractive design. The modern lines and exceptional technical quality are combined with a number of details that are the result of meticulous research aimed at achieving maximum operator comfort. The perfectly balanced machine body, the practical handgrip, the silent operation and minimum vibration are just some of the characteristics that help make BigFoot the most versatile and sought-after polishing system.

LHR 75

The small pneumatic random orbital polisher has a Ø15mm orbit and a Ø75mm backing pad, allowing the tool to work in awkward and difficult to reach areas. The reduced size and high cutting capacity, combined with the RUPES BigFoot Ø 80/100 mm polishing foam pads, make the LHR 75 the ideal polisher for spot repairs, polishing contoured areas and parts such as mirrors and pillars.



RANDOM ORBITAL



TECHNICAL DATA

Ø backing pad	mm-in	75 - 3"
Ø orbit	mm-in	15 - 19/32"
Working pressure	bar-PSIG	6.2 - 90
Air consumption max	l/min-CFM	320 - 11.3
R.P.M.		0 - 11000
Weight	kg-lbs	0.65 - 1.43
Speed control		•
Backing pad thread		M6



ELEGANTLY DESIGNED

The ergonomic hand grip allows full control of the polisher using just one hand. The hand grip is lined with composite material, extremely resistant to impact and mechanical stresses, designed to isolate the hand from the air ducts and guarantee greater comfort. The rubber cover guarantees maximum grip and precision in the movement of the tool when both hands are used.

SPEED CONTROL

The speed controller on the handle is both practical and easy to use. The speed of the polisher can also be regulated during use, thus avoiding any interruption of the polishing operation.



EXTREMELY LIGHTWEIGHT

The LHR75 pneumatic mini weighs a mere 0.65 kilograms (1.43 lbs). Thanks to its light weight spot repairs, edgework, or polishing processes in compact spaces cause much less fatigue for the operator.

NOISE REDUCTION AIR OUTLET

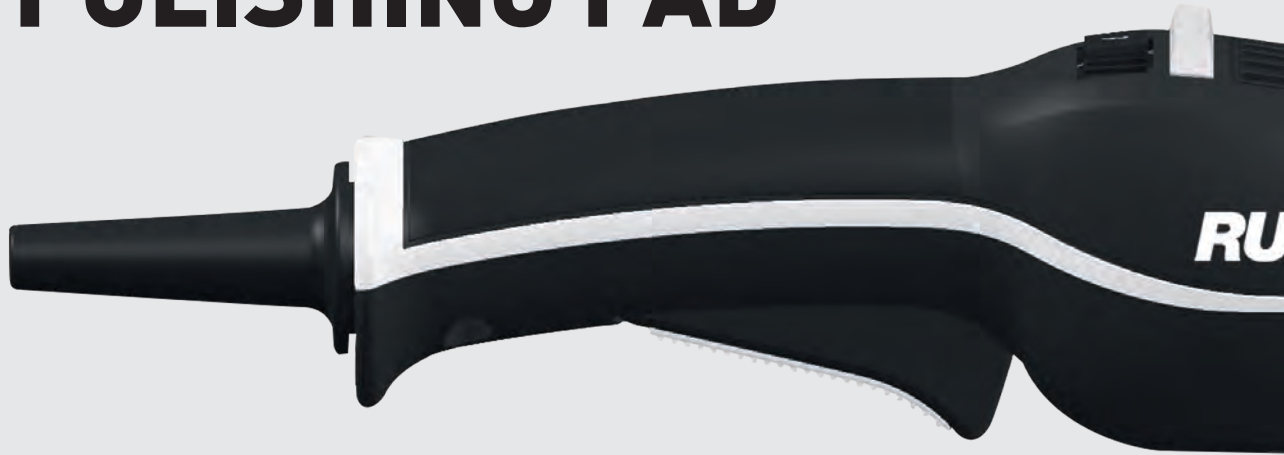
In addition to being an air outlet, the device also acts as a silencer. Mounted on the base near the air connection, the small silencer is an extremely effective way of deadening the noise generated by the flow of compressed air.



DESIGN

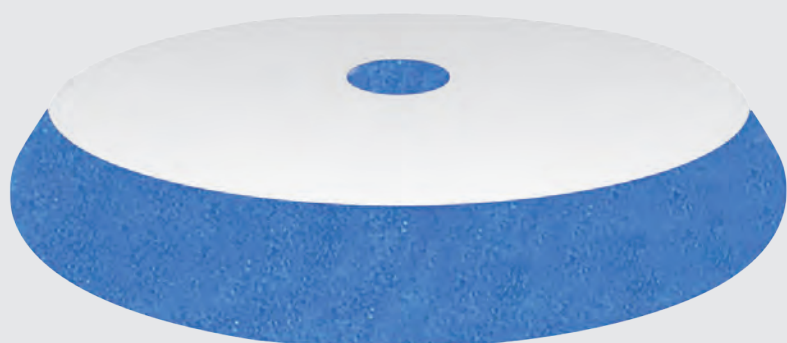
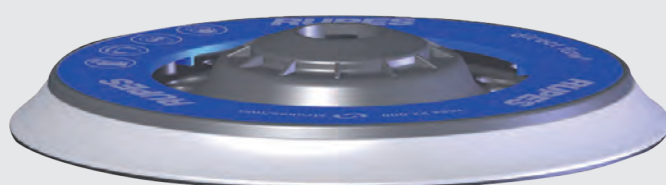
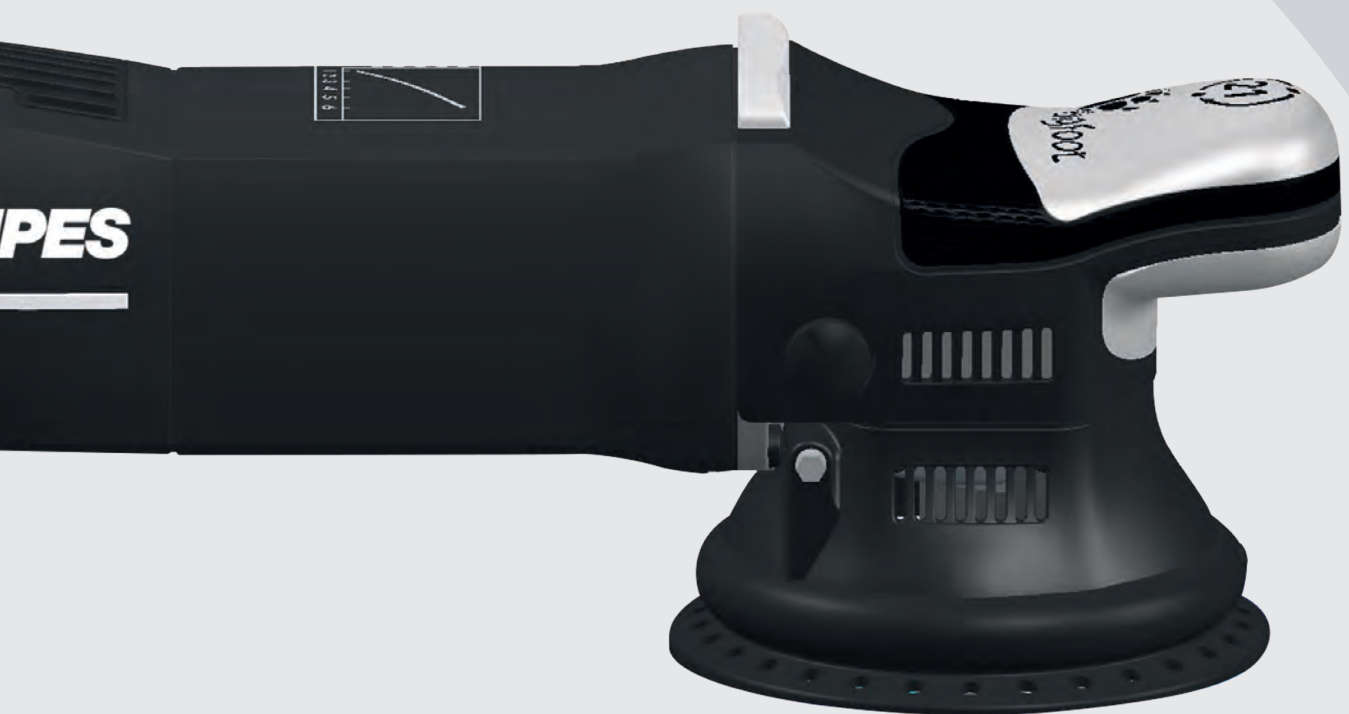
The attention to detail is not limited to just the innovative and attractive design. The modern lines and exceptional technical quality are combined with a number of details that are the result of meticulous research aimed at achieving maximum operator comfort. The perfectly balanced machine body, the practical handgrip, the silent operation and minimum vibration are just some of the characteristics that help make BigFoot the most versatile and sought-after polishing system.

TOOL BACKING PAD POLISHING PAD



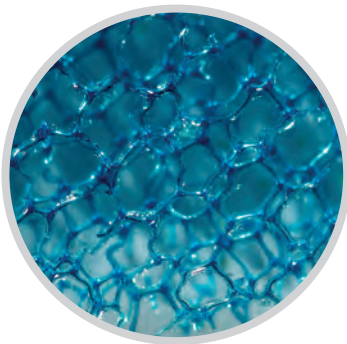
**THE THREE CRITICAL SYSTEM COMPONENTS
ARE DESIGNED TO WORK IN COMBINATION
TO GUARANTEE LOW VIBRATION LEVELS AND
THE BEST POSSIBLE POLISHING RESULT.**

The BigFoot systems are designed for maximum efficiency, ease of use and operator comfort. Using BigFoot with RUPES original backing pads and RUPES original polishing pads results in a technical system that guarantees the best possible polishing result and ensures that the tool has perfect balance and a substantially reduced vibration level. The use of backing pads or compound carriers other than members of the BigFoot family of products can lead to a reduction in performance and can further affect the technical and mechanical characteristics of the tool, changing its balance and increasing vibration. Increased vibration not only affects the comfort and overall safety of the operator, but also results in significantly diminished tool life.



BIGFOOT FOAM POLISHING PADS

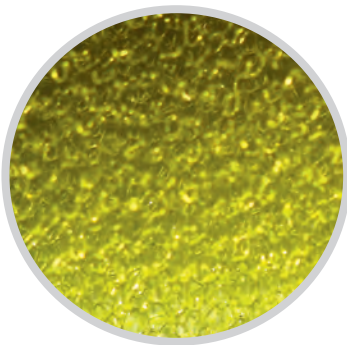
THE FOAM PAD IS ONE OF THE KEY ELEMENTS IN THE POLISHING PROCESS; MANY VARIABLES IN THE COMPOSITION AND DESIGN OF THE SPECIALIZED BIGFOOT FOAM PADS HAVE TO BE TAKEN INTO CONSIDERATION TO OPTIMIZE PERFORMANCE. WHILE ALL BIGFOOT FOAM PADS FOLLOW THE SAME COLOR-CODED DESIGN, THE PADS FOR EACH TOOL MOVEMENT ARE COMPOSED OF UNIQUE MATERIALS AND PROFILES SELECTED SPECIFICALLY FOR THAT TYPE OF TOOL. WITHIN THE BIGFOOT FOAM PAD RANGE YOU'LL FIND PADS FOR BOTH ORBITAL AND ROTARY TOOLS.



COARSE BLUE FOAM PADS

Fast cutting performance with a best in class finishing on a diverse range of surfaces. Unique foam formulations and profiles available to support dual-action orbital and rotary polishing tools.

- For orbital tools part code: 9.DA__H
- For rotary tools part code: 9.BR__H



FINE YELLOW FOAM PADS

Fine cut with a deep gloss finish. Our most popular and versatile foam pad, the fine yellow foam provides excellent cutting and finishing balance. Unique material composition and profile designs available for dual-action and rotary polishing tools.

- For orbital tools part code: 9.DA__M
- For rotary tools part code: 9.BR__M



ULTRAFINE WHITE FOAM PADS

Formulated for a show car finish, our highest PPI foam pairs perfectly with our UNO series of polishes for delivering the highest possible gloss or finishing on the most difficult-to-finish surfaces. Available in unique profiles for dual-action orbital and rotary polishing tools.

- For orbital tools part code: 9.DA__S
- For rotary tools part code: 9.BR__S



**UNIQUE MATERIALS & PAD PROFILES
FOR DIFFERENT TOOL MOVEMENTS**



A NEW CONCEPT

PADS PACKAGED INDIVIDUALLY IN A RESISTANT METALLIC FILM FLOW PACK

The metallic film flow pack ensures excellent mechanical properties against accidental piercing and ripping. The new flow pack guarantees a high level of protection for the foam pads to preserve the original characteristics:



UV PROTECTION

DUST PROTECTION

HUMIDITY PROTECTION

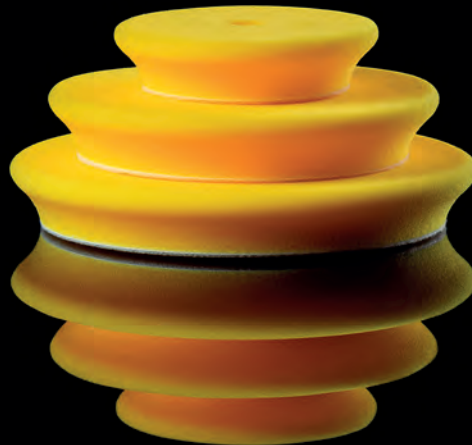
NEW D-A SERIES FOAM PADS

FOR USE WITH ALL DUAL-ACTION ORBITAL POLISHING TOOLS

**D-A
COARSE**
Part codes 9.DA__H



**D-A
FINE**
Part codes 9.DA__M



**D-A
ULTRA-FINE**
Part codes 9.DA__S



D-A COARSE HIGH PERFORMANCE COARSE CUTTING FOAM PAD

The **D-A COARSE** blue foam pad is the most aggressive foam option in the BigFoot pad family. The design and material are engineered to optimize the cutting action of random orbital and gear-drive orbital polishers while delivering a quality finish. Pair the D-A COARSE pad with RUPES D-A COARSE compound to remove moderate-to-severe defects from most paint systems quickly.

D-A FINE HIGH PERFORMANCE FINE FINISHING FOAM PAD

The **D-A FINE** yellow foam pad is the most versatile foam pad in the RUPES BigFoot range. It delivers the rapid removal for moderate-to-fine paint defects while polishing the paint to a high-gloss finish on most paint systems. This pad is designed to maximize the performance of both random orbit or gear-driven orbital polishers. Pair with RUPES D-A FINE polishing compound for high-quality results and a brilliant finish.

D-A ULTRA-FINE HIGH PERFORMANCE ULTRA FINE FOAM PAD

The **D-A ULTRAFINE** foam pad features a special formula which is strong enough to work with any dual-action polisher while being soft enough to polish the most delicate and haze-prone paints to a mirror-like luster. Use this pad on gear-driven or random orbital polishers with RUPES UNO PURE ultra-fine polish to remove extremely fine defects or to burnish paint to a show car finish. The D-A ULTRA-FINE foam pad is ideal for the applications of waxes and sealants as well.

BIGFOOT ROTARY



FOAM POLISHING PADS



DESIGNED SPECIFICALLY FOR ROTARY TOOLS

Specialized foam formulations and profiles optimized for rotary application. The BigFoot Rotary Foam Pad range includes 3 distinct types of foam to give the operator choices depending on the desired outcome. Open cell foam materials were chosen to minimize heat and reduce surface swelling. The pad profile helps to prevent accidental contact between the backing plate and the panel. All diameters are 25mm (1") thickness and are available in several diameters ranging from 90mm (3.5") to 180mm (7") to fit any situation or application.

COARSE BLUE ROTARY FOAM PAD (Part Codes 9.BR___H)

The high performance and aggressive blue foam removes severe defects and sanding marks on painted surfaces while still leaving a quality finish.

FINE YELLOW ROTARY FOAM PAD (Part Codes 9.BR___M)

Eliminates moderate surface defects and imperfections while restoring high gloss. The exclusive foam structure provides a smooth and comfortable polishing experience.

ULTRAFINE WHITE ROTARY FOAM PAD (Part Codes 9.BR___S)

The completely new soft foam technology removes fine imperfections and creates an unbelievably high gloss finish. Highly recommended when using rotary on dark colors with RUPES UNO Pure Ultrafine Polish.

CUT&FINISH WOOL POLISHING PADS



RUPES BigFoot CUT & FINISH Rotary Wool Pads use only the highest-quality genuine merino wool fibers refined to a consistent 20mm length, assembled in an extremely dense pattern, onto a specially designed foam cushion to deliver an optimized balance between cut and finish. The unique design allows the operator to manipulate the pad in several applications and contour to panel shapes without risk of damage to the surface or uneven cut. RUPES BigFoot CUT & FINISH Rotary Wool Pads are compatible with virtually all rotary-style polishers, but perform best with a low speed/high torque tool like the BigFoot LH19E.

Technical Specifications:

- Constructed from highly refined genuine merino wool
- 100% natural fibers, no synthetic filler materials
- High density foam backing provides cushion and contourability on varied surfaces
- Available in 4 different diameters to suit common rotary applications



9.BL200F
for Ø165mm
Ø6.5" backing pads



9.BL180F
for Ø150mm
Ø6" backing pads



9.BL150F
for Ø125mm
Ø5" backing pads



9.BL80F
for Ø75mm
Ø3" backing pads

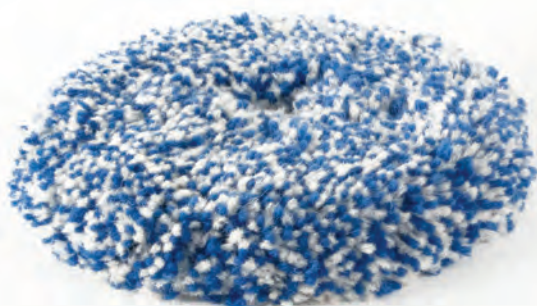
TWISTED WOOL POLISHING PADS



Designed to provide impressive cutting speed, reduced risk of rotary swirls and improved process efficiency while maintaining a smooth, vibration-free, operator experience. The **RUPES BigFoot Twisted Wool Cutting Pad** for rotary polishers are available in three sizes and are compatible with virtually all rotary polishing tools on the market today. Each BigFoot Twisted Wool Cutting Pad is constructed of a premium blend of 100% natural lamb's wool and assembled with a precise strand length of 35mm to promote balance and smooth operation. No synthetic fibers or fillers are used in the construction of the pad and each strand is steam set to ensure consistency and fastness of color.

Technical Specifications:

- Blend of various 100% natural lamb's wool with 0% of synthetic fibers.
- Highly refined twisted strands ensure consistency across the entire pad surface
- Maximized fiber density for increased surface area and optimal performance
- Steam treated to set fibers and coloring after production
- Available in 3 different diameters to suit common rotary applications



9.BL230H

for Ø165mm / Ø6.5" backing pads



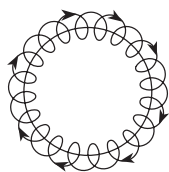
9.BL200H

for Ø150mm / Ø6" backing pads



9.BL180H

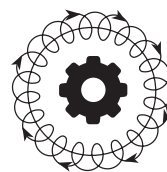
for Ø125mm / Ø5" backing pads



RANDOM ORBITAL



GEAR DRIVEN



TRIPLE ACTION

BIGFOOT D-A WOOL PADS

INCREDIBLE POLISHING PERFORMANCE THAT YOU WON'T FIND ANYWHERE ELSE

The RUPES D-A Wool Pad range has been impressing detailers, bodyshop technicians and at home enthusiasts with their incredible range of performance. Each pad is compatible with all the random orbital and the gear-driven polishers included in the BigFoot family. The face of each pads is constructed of 100% natural fibers attached to a polyester bonding material layer, then mated to a specially chosen foam backing. Quality control for the wool is monitored through the entire manufacturing process to ensure consistency and unmatched performance.

COARSE BLUE D-A WOOL POLISHING PAD (Part Codes 9.BW___H)

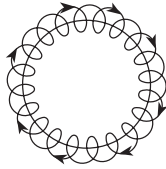
Each BigFoot D-A Coarse Wool Pad is constructed using two distinct fiber lengths creating a dual density wool surface and a specific visible pattern. More than just an aesthetic detail, this configuration provides a great balance of cutting power and finishing ability when compared to traditional or single density wool pads.

YELLOW WOOL POLISHING PADS MEDIUM (Part Codes 9.BW___M)

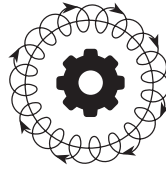
The BigFoot D-A Medium Wool Pad features a consistent 15mm fiber length through the entirety of the pads surface. The premium, soft, and flexible wool, paired with a soft and flexible yellow foam backing, provides excellent cutting of moderate defects, excellent finishing ability on most surfaces.







RANDOM ORBITAL



TRIPLE ACTION

BIGFOOT MICROFIBER POLISHING PADS

The innovative RUPES PATENTED microfiber polishing pads are manufactured using a polyurethane resin directly injected into the structure between the velcro interface and the microfiber fabric. The resin crosslinks directly to both materials to provide a stable and secure mechanical bond without the use of adhesives. Due to the unique moulding process, RUPES is able to offer a pad with a beveled edge, allowing easy conformability to all shapes during the polishing process. In addition to helping dissipate heat, the slots also help to properly balance the microfiber polishing pad with the designated tool.

TWO LEVELS OF CUTTING POWER

RUPES BigFoot Microfiber Pads are available in two versions:

- Coarse for heavy cutting and severe defect removal on hard paint systems.
- Fine for lighter cutting and higher level of finishing vs. the coarse pad.

TECHNICAL BENEFITS

- Quick defect correction on high solids or ceramic clear coats.
- High efficiency on clear coat and single stage paint finishes
 - Incredibly effective on harder surfaces
 - Patented slots actively manage heat generation



RUPES PATENTED SPIRAL SLOTS

The innovative spiral slots represent an important technical improvement with a unique design. Developed for use with BigFoot random orbital polishers, the new spiral slots guarantee:

- Heat dissipation
- Lighter weight for a better balance of the machine



BLUE MICROFIBER POLISHING PADS COARSE

The Coarse Microfiber Pads are designed for removing heavy swirl marks, scratches and oxidation from any color paintwork. The cutting version features a less dense microfiber and is perfect for use with heavy cutting BigFoot polishing compound. The special microfiber allows for the true correction power of the product used and for maximum product coverage to achieve the highest quality results on ceramic laquer.



YELLOW MICROFIBER POLISHING PADS FINE

The Fine Microfiber Pads are designed to restore the depth and clarity to your vehicle's paintwork. The high density microfiber is perfect for removing light swirl marks and holograms using fine BigFoot polishing compound. The Fine Microfiber Pads eliminate light imperfections delivering a perfect optical grade finish.

D-A SERIES

HIGH PERFORMANCE POLISHING COMPOUNDS

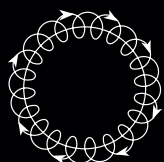


UNO SERIES

UNIVERSALLY COMPATIBLE POLISHING COMPOUNDS



**Powerful defect removal
and impressive finishing for
all Dual-Action polishers**



RANDOM ORBITAL



GEAR DRIVEN

PART CODE	SIZE
9.DACOARSE	1000ml [33.8oz]
9.DACOARSE250	250ml [8.45oz]



D-A COARSE

HIGH-PERFORMANCE CUT-POLISHING COMPOUND

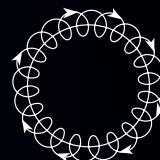
D-A COARSE is a high-performance compound from RUPES designed to remove defects and deliver an impressive finish on various surfaces. D-A Coarse continues the BigFoot polishing system tradition fast cutting, impressive finishing capability, and a smooth operator experience with low dust and effortless wipe off. This compound is formulated to maximize the polishing power of all dual-action polishers, including random orbital and gear-driven tool movements, and pairs perfectly with RUPES BigFoot polishing pads. Use RUPES D-A Coarse Compound with BigFoot D-A Coarse blue foam pads, D-A wool pads, or microfiber ads to remove up to 1500 grit sand scratches on most automotive paints, gelcoat, and similar surfaces. The powerful cutting ability and unexpected level of finish quality produced by RUPES D-A Coarse compound make it an ideal solution for automotive clear coat, gelcoat, lacquer, and many other surfaces in several industries.

FEATURES AND BENEFITS

- High-performance cutting compound
- Durable lubrication system for an extended polishing cycle and longer working time
- Low dusting formula reduces post-compound cleanup work
- One-step moderate-to-severe defect removal and finishing on most paints
- Sanding mark and severe defect removal
- Recommended for random orbital or gear-driven polishers



Incredible versatility and high-gloss finishing for all Dual-Action polishers



RANDOM ORBITAL



GEAR DRIVEN

PART CODE	SIZE
9.DAFINE	1000ml (33.8oz)
9.DAFINE250	250ml (8.45oz)

D-A FINE

HIGH PERFORMANCE

FINE POLISHING COMPOUND

D-A FINE combines the power to quickly polish away moderate paint defects with the finesse essential to producing a stunning haze-free finish on automotive paint, gelcoat, and similar surfaces. This unique fusion of performance is the result of RUPES extensive development and testing process combined with our technical expertise as a world leader in surface correction. BigFoot D-A Fine maximizes the finishing ability of all random or gear-driven orbital polishers when used with BigFoot D-A fine foam, wool, and microfiber pads. Use this amazing fine polishing compound by itself to remove moderate defects and create gloss on softer finishes or as a second step to further refine a surface corrected with BigFoot D-A Coarse Polishing Compound.

FEATURES AND BENEFITS

- Excellent cutting performance relative to most “fine” polishing compounds
- New micro-abrasive technology and proprietary blend enhance finishing ability
- Easy wipe-off, for fewer towel marks on soft paints or delicate surfaces
- Easy application when used with RUPES color-coordinated pad system
- One-step light defect removal and finishing on most paints
- Can also be excellent 2nd step polish following D-A Coarse Compound
- Recommended for use with BigFoot Random Orbital or Gear-Driven tools

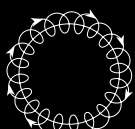
Correct, polish, and protect in one step using any Dual-Action or Rotary polisher



ROTARY



GEAR DRIVEN



RANDOM ORBITAL

PART CODE	SIZE
9.PROTECT	1000ml (33.8oz)
9.PROTECT250	250ml (8.45oz)



UNIVERSAL ALL-IN-ONE POLISH & PROTECTION

UNO PROTECT is an all-in-one compound, polish, and protectant that removes moderate defects and leaves a high-gloss, slick, polymer protected finish that lasts for up to 90 days. The specialized blend of advanced abrasives combined with high tech synthetic sealants can be applied by machine or by hand to automotive clear coat, gelcoat, and similar surfaces. The incredibly versatile formula can be tuned by simply changing the pad type depending on the target defects or specific application. UNO PROTECT produces rapid results with minimal effort making it the ideal solution for express detail services, high-volume detail shops, car dealerships, and used car reconditioning facilities.

FEATURES AND BENEFITS

- Removes moderate-to-light defects and polishes to a high gloss shine in one step
- Leaves the surface noticeably slick and easy to maintain
- Provides a protective layer of polymer sealant that lasts up to 90 days
- Can be applied by machine or by hand. (Apply by machine for best results)
- Universal across all BigFoot Polishing System Movements
- Easily adjust the cut or finish quality by changing pads

NEW



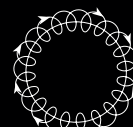
The new standard for ultra-fine finishing products. Compatible with Dual-Action and Rotary polishers



ROTARY



GEAR DRIVEN



RANDOM ORBITAL

PART CODE	SIZE
9.PURE	1000ml (33.8oz)
9.PURE250	250ml (8.45oz)

FILLER-FREE ULTRA-FINE FINISHING POLISH

UNO PURE is the ONE ultra-fine finishing polish needed to create a stunning gloss on all polisher types: Gear-driven orbital, random orbital, and rotary. As the name implies, UNO PURE polishes the finish using a propriety blend of high-tech abrasives to create true gloss without the use of fillers, temporary gloss enhancers, or other masking agents. Optimized to work with BigFoot D-A Ultra-Fine pads, this amazing finishing polish is ideal for removing haze and polishing marks from the softest automotive paints and surfaces. The fantastic finishing ability and absence of fillers make UNO PURE the best choice in creating show-car gloss or preparing a surface for a high-quality

FEATURES AND BENEFITS

- Universal across all BigFoot Polishing System Movements
- Smooth user experience with easy wipe off
- Unmatched finishing quality, even on the softest paint systems
- Validated for all paint types, including single stage, clearcoat, hard, soft, or “sticky” paints
- No intentional filling ingredients added
- No protection properties, leaves the finish “PURE” and ready for application of a protective product
- For best results, use with RUPES White Finishing Foam Pads

BIGFOOT ROTARY COMPOUNDS



SUPERIOR CUTTING WITH SURPRISING FINISHING

BIGFOOT ROTARY COARSE COMPOUND is a high-performance compound recommended for first step polishing. The abrasive grain is the most “aggressive” of the BigFoot abrasives and is used for the rapid removal of marks and scratches when paired with any of the blue coarse BigFoot rotary pads. Unlike competitive systems that require several follow up steps, BigFoot Rotary Coarse compound is highly effective in restoring paints and creating a high degree of gloss with minimal refinement required on most paint systems.

FEATURES AND BENEFITS

- Corrects severe scratches and P1500 sanding marks
- Leaves a higher gloss finish than competitive coarse cutting solutions
- Reduces the required number of follow up steps to achieve a deliverable finish
- Compatible with all rotary tools, but best with low-speed/high-torque machines like the BigFoot LH19E
- Low dusting with easy wipe off
- Bodyshop safe formula can be used on fresh or fully cured paint

PART CODE	SIZE
9.BRCOARSE	1000ml (33.8oz)
9.BRCOARSE250	250ml (8.45oz)





HIGH-GLOSS FINISHING FOR ROTARY POLISHERS

BIGFOOT ROTARY FINE COMPOUND is formulated and manufactured in-house by RUPES. This high-performance rotary polish is the ideal second step to follow a coarse rotary process to refine finishes, remove light defects, and deliver a wax ready shine. The specialized micro abrasives and proprietary blend have been developed specifically to operate smoothly and enhance the rotary user experience and allow operators to remove up to P3000 grit sand scratches in as little as one step. Pair the BigFoot Rotary Fine Polishing Compound with the RUPES Yellow Fine Rotary Foam Pads on the smooth and nimble operation of the LH19E rotary polisher to experience the smoothest rotary polishing process ever.

FEATURES AND BENEFITS

- Corrects moderate-to-fine scratches and P3000 sanding marks
- Produces an extremely high gloss on most surfaces
- Perfect solution for a follow-up to a more aggressive cutting process to refine the paint
- Compatible with all rotary tools, but best with low-speed/high-torque machines like the BigFoot LH19E
- Specialized lubrication system delivers a smooth operator experience
- Bodyshop safe formula can be used on fresh or fully cured paint

PART CODE	SIZE
9.BRFINE	1000ml (33.8oz)
9.BRFINE250	250ml (8.45oz)



RUPES®

Due to its constant desire to improve its products, RUPES S.p.A. reserves the right to make any technical or design modification to its products without prior notice. The manufacturer shall not be responsible for printing errors. This document voids and replaces previous ones.

RUPES USA, Inc.

531 South Taylor Ave
Louisville, CO 80027

T +1- 877-224-5750

E info@rupesusa.com

W www.rupesusa.com

Follow us on:

